

**Integrin  $\beta$ 2 (phospho Thr758) Polyclonal Antibody**

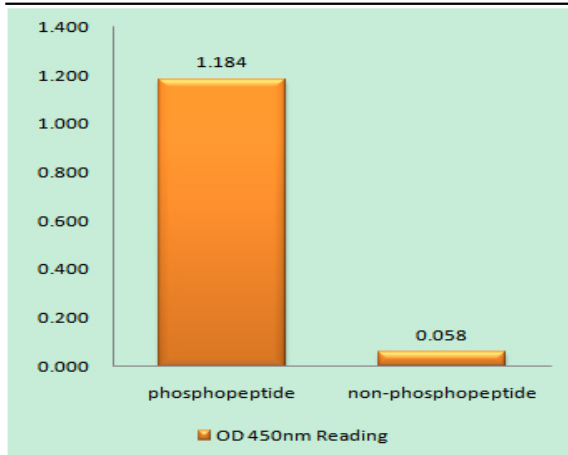
<b>Catalog No :</b>	YP1171
<b>Reactivity :</b>	Human;Mouse;Rat
<b>Applications :</b>	WB;IHC
<b>Target :</b>	Integrin $\beta$ 2
<b>Fields :</b>	>>Rap1 signaling pathway;>>Phagosome;>>Hippo signaling pathway;>>Cell adhesion molecules;>>Complement and coagulation cascades;>>Neutrophil extracellular trap formation;>>Natural killer cell mediated cytotoxicity;>>Leukocyte transendothelial migration;>>Regulation of actin cytoskeleton;>>Pertussis;>>Legionellosis;>>Leishmaniasis;>>Malaria;>>Amoebiasis;>>Staphylococcus aureus infection;>>Tuberculosis;>>Human T-cell leukemia virus 1 infection;>>Rheumatoid arthritis;>>Viral myocarditis
<b>Gene Name :</b>	ITGB2
<b>Protein Name :</b>	Integrin beta-2
<b>Human Gene Id :</b>	3689
<b>Human Swiss Prot No :</b>	P05107
<b>Mouse Gene Id :</b>	16414
<b>Mouse Swiss Prot No :</b>	P11835
<b>Immunogen :</b>	The antiserum was produced against synthesized peptide derived from human CD18/ITGB2 around the phosphorylation site of Thr758. AA range:720-769
<b>Specificity :</b>	Phospho-Integrin $\beta$ 2 (T758) Polyclonal Antibody detects endogenous levels of Integrin $\beta$ 2 protein only when phosphorylated at T758.
<b>Formulation :</b>	Liquid in PBS containing 50% glycerol, 0.5% BSA and 0.02% sodium azide.
<b>Source :</b>	Polyclonal, Rabbit,IgG
	WB 1:500-2000;IHC 1:50-300

---

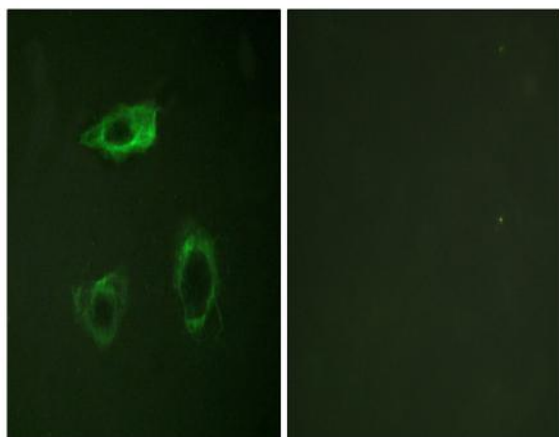
<b>Purification :</b>	The antibody was affinity-purified from rabbit antiserum by affinity-chromatography using epitope-specific immunogen.
<b>Concentration :</b>	1 mg/ml
<b>Storage Stability :</b>	-15°C to -25°C/1 year(Do not lower than -25°C)
<b>Observed Band :</b>	170kD
<b>Cell Pathway :</b>	Cell adhesion molecules (CAMs);Natural killer cell mediated cytotoxicity;Leukocyte transendothelial migration;Regulates Actin and Cytoskeleton;Viral myocarditis;
<b>Background :</b>	This gene encodes an integrin beta chain, which combines with multiple different alpha chains to form different integrin heterodimers. Integrins are integral cell-surface proteins that participate in cell adhesion as well as cell-surface mediated signalling. The encoded protein plays an important role in immune response and defects in this gene cause leukocyte adhesion deficiency. Alternative splicing results in multiple transcript variants. [provided by RefSeq, Dec 2014],
<b>Function :</b>	disease:Defects in ITGB2 are the cause of leukocyte adhesion deficiency type I (LAD1) [MIM:116920]. LAD1 patients have recurrent bacterial infections and their leukocytes are deficient in a wide range of adhesion-dependent functions.,function:Integrin alpha-L/beta-2 is a receptor for ICAM1, ICAM2, ICAM3 and ICAM4. Integrins alpha-M/beta-2 and alpha-X/beta-2 are receptors for the iC3b fragment of the third complement component and for fibrinogen. Integrin alpha-X/beta-2 recognizes the sequence G-P-R in fibrinogen alpha-chain. Integrin alpha-M/beta-2 recognizes P1 and P2 peptides of fibrinogen gamma chain. Integrin alpha-M/beta-2 is also a receptor for factor X. Integrin alpha-D/beta-2 is a receptor for ICAM3 and VCAM1.,online information:ITGB2 mutation db,PTM:Both Ser-745 and Ser-756 become phosphorylated when T-cells are exposed to phorbol esters. Phosphorylation on Thr-758 (but not on S
<b>Subcellular Location :</b>	Cell membrane ; Single-pass type I membrane protein . Membrane raft ; Single-pass type I membrane protein .
<b>Expression :</b>	Leukocytes (PubMed:23775590). Expressed in neutrophils (at protein level) (PubMed:21193407, PubMed:28807980).

---

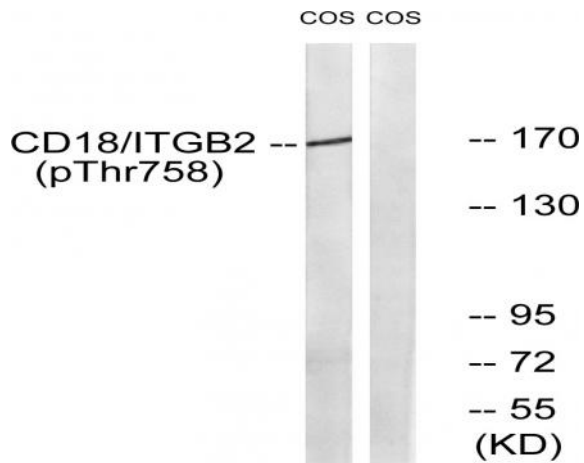
## Products Images



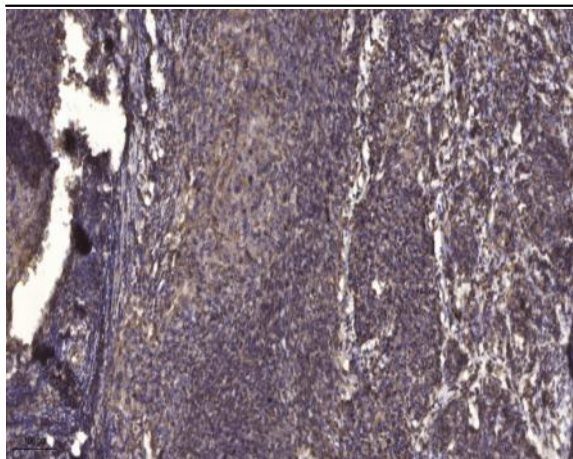
Enzyme-Linked Immunosorbent Assay (Phospho-ELISA) for Immunogen Phosphopeptide (Phospho-left) and Non-Phosphopeptide (Phospho-right), using CD18/ITGB2 (Phospho-Thr758) Antibody



Immunofluorescence analysis of HepG2 cells, using CD18/ITGB2 (Phospho-Thr758) Antibody. The picture on the right is blocked with the phosphopeptide.



Western blot analysis of lysates from COS7 cells treated with EGF 200ng/ml 30', using CD18/ITGB2 (Phospho-Thr758) Antibody. The lane on the right is blocked with the phosphopeptide.



Immunohistochemical analysis of paraffin-embedded human cervical carcinoma. 1, Antibody was diluted at 1:200(4° overnight). 2, Tris-EDTA,pH9.0 was used for antigen retrieval. 3,Secondary antibody was diluted at 1:200(room temperature, 45min).