

**MAP-4 (phospho Ser696) Polyclonal Antibody**

<b>Catalog No :</b>	YP1158
<b>Reactivity :</b>	Human;Mouse;Rat
<b>Applications :</b>	IHC;IF;ELISA
<b>Target :</b>	MAP4
<b>Gene Name :</b>	MAP4
<b>Protein Name :</b>	Microtubule-associated protein 4
<b>Human Gene Id :</b>	4134
<b>Human Swiss Prot No :</b>	P27816
<b>Mouse Gene Id :</b>	17758
<b>Mouse Swiss Prot No :</b>	P27546
<b>Rat Gene Id :</b>	367171
<b>Rat Swiss Prot No :</b>	Q5M7W5
<b>Immunogen :</b>	The antiserum was produced against synthesized peptide derived from human MAP4 around the phosphorylation site of Ser696. AA range:662-711
<b>Specificity :</b>	Phospho-MAP-4 (S696) Polyclonal Antibody detects endogenous levels of MAP-4 protein only when phosphorylated at S696.
<b>Formulation :</b>	Liquid in PBS containing 50% glycerol, 0.5% BSA and 0.02% sodium azide.
<b>Source :</b>	Polyclonal, Rabbit,IgG
<b>Dilution :</b>	IHC 1:100 - 1:300. IF 1:200 - 1:1000. ELISA: 1:5000. Not yet tested in other applications.
<b>Purification :</b>	The antibody was affinity-purified from rabbit antiserum by affinity-

chromatography using epitope-specific immunogen.

---

**Concentration :** 1 mg/ml

---

**Storage Stability :** -15°C to -25°C/1 year(Do not lower than -25°C)

---

**Molecularweight :** 121kD

---

**Observed Band :** 121kD

---

**Background :** The protein encoded by this gene is a major non-neuronal microtubule-associated protein. This protein contains a domain similar to the microtubule-binding domains of neuronal microtubule-associated protein (MAP2) and microtubule-associated protein tau (MAPT/TAU). This protein promotes microtubule assembly, and has been shown to counteract destabilization of interphase microtubule catastrophe promotion. Cyclin B was found to interact with this protein, which targets cell division cycle 2 (CDC2) kinase to microtubules. The phosphorylation of this protein affects microtubule properties and cell cycle progression. Multiple transcript variants encoding different isoforms have been found for this gene. [provided by RefSeq, Aug 2008],

---

**Function :** alternative products:Additional isoforms seem to exist,caution:The sequence shown here is derived from an Ensembl automatic analysis pipeline and should be considered as preliminary data.,function:Non-neuronal microtubule-associated protein. Promotes microtubule assembly.,PTM:Phosphorylated upon DNA damage, probably by ATM or ATR (By similarity). Phosphorylation on Ser-787 negatively regulates MAP4 activity to promote microtubule assembly. Isoform 3 is phosphorylated on Ser-337 and Ser-338.,similarity:Contains 3 Tau/MAP repeats.,similarity:Contains 4 Tau/MAP repeats.,

---

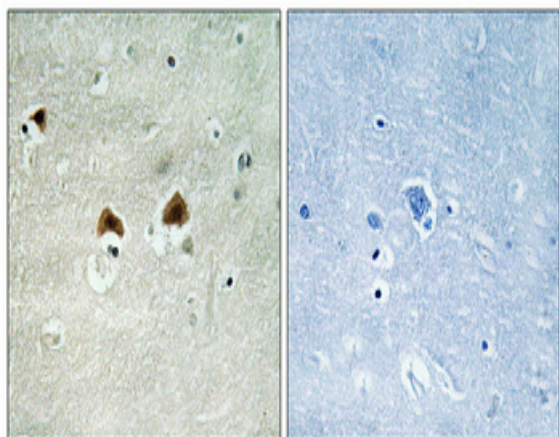
**Subcellular Location :** Cytoplasm, cytoskeleton . Cytoplasm, cytoskeleton, microtubule organizing center . Recruitment to microtubule is inhibited by microtubules polyglutamylation.

---

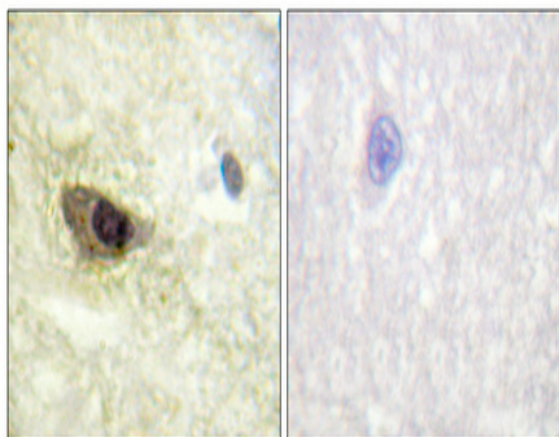
**Expression :** Bone marrow,Brain,Cerebellum,Colon carcinoma,Epithelium,Eye,Heart,Liver,Lym

---

## Products Images



Immunohistochemical analysis of paraffin-embedded Human brain. Antibody was diluted at 1:100(4° overnight). High-pressure and temperature Tris-EDTA,pH8.0 was used for antigen retrieval. Negative contrl (right) obtaned from antibody was pre-absorbed by immunogen peptide.



Immunohistochemical analysis of paraffin-embedded Human brain. Antibody was diluted at 1:100(4° overnight). High-pressure and temperature Tris-EDTA,pH8.0 was used for antigen retrieval. Negative contrl (right) obtaned from antibody was pre-absorbed by immunogen peptide.