

ERF (phospho Thr526) Polyclonal Antibody

| | |
|------------------------------|---|
| Catalog No : | YP1129 |
| Reactivity : | Human;Mouse |
| Applications : | WB;IHC;IF;ELISA |
| Target : | ERF |
| Gene Name : | ERF |
| Protein Name : | ETS domain-containing transcription factor ERF |
| Human Gene Id : | 2077 |
| Human Swiss Prot No : | P50548 |
| Mouse Gene Id : | 13875 |
| Mouse Swiss Prot No : | P70459 |
| Immunogen : | The antiserum was produced against synthesized peptide derived from human ERF around the phosphorylation site of Thr526. AA range:492-541 |
| Specificity : | Phospho-ERF (T526) Polyclonal Antibody detects endogenous levels of ERF protein only when phosphorylated at T526. |
| Formulation : | Liquid in PBS containing 50% glycerol, 0.5% BSA and 0.02% sodium azide. |
| Source : | Polyclonal, Rabbit,IgG |
| Dilution : | WB 1:500 - 1:2000. IHC 1:100 - 1:300. IF 1:200 - 1:1000. ELISA: 1:20000. Not yet tested in other applications. |
| Purification : | The antibody was affinity-purified from rabbit antiserum by affinity-chromatography using epitope-specific immunogen. |
| Concentration : | 1 mg/ml |

Storage Stability : -15°C to -25°C/1 year(Do not lower than -25°C)

Observed Band : 58kD

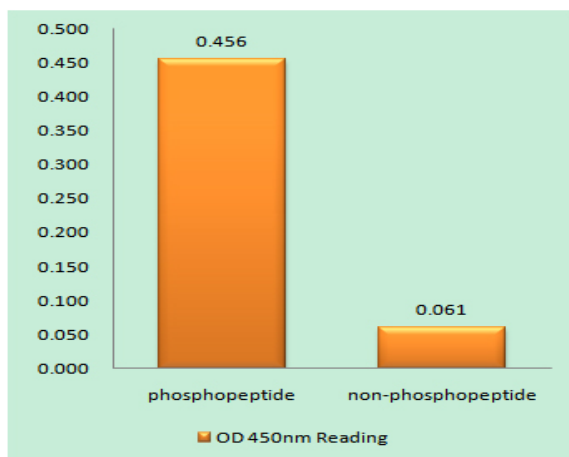
Background : ETS2 is a transcription factor and protooncogene involved in development, apoptosis, and the regulation of telomerase. The protein encoded by this gene binds to the ETS2 promoter and is a strong repressor of ETS2 transcription. Several transcript variants encoding two different isoforms have been found for this gene. [provided by RefSeq, Aug 2015],

Function : function:Potent transcriptional repressor that binds to the H1 element of the Ets2 promoter. May regulate other genes involved in cellular proliferation. Required for extraembryonic ectoderm differentiation, ectoplacental cone cavity closure, and chorioallantoic attachment (By similarity). May be important for regulating trophoblast stem cell differentiation.,PTM:Phosphorylated by multiple kinases including probably ERK2. Phosphorylation regulates the activity of ERF.,sequence caution:The sequence differs from that shown because it seems to be derived from a pre-mRNA.,similarity:Belongs to the ETS family.,similarity:Contains 1 ETS DNA-binding domain.,tissue specificity:Highest levels in testis, ovary, pancreas, and heart.,

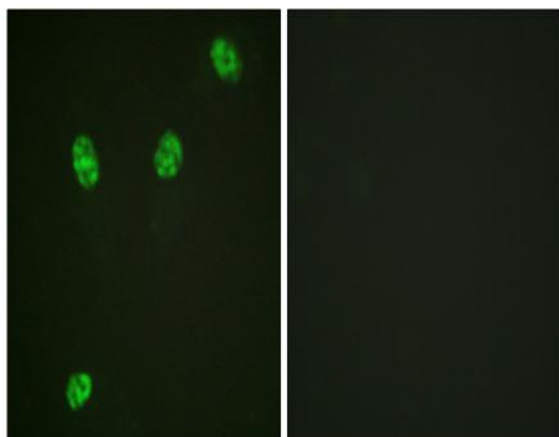
Subcellular Location : Nucleus.

Expression : Highest levels in testis, ovary, pancreas, and heart.

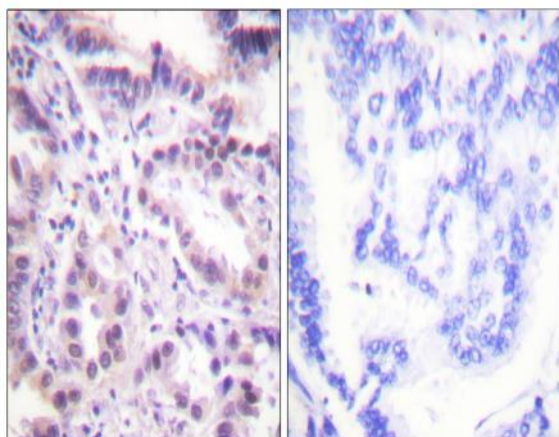
Products Images



Enzyme-Linked Immunosorbent Assay (Phospho-ELISA) for Immunogen Phosphopeptide (Phospho-left) and Non-Phosphopeptide (Phospho-right), using ERF (Phospho-Thr526) Antibody



Immunofluorescence analysis of HeLa cells, using ERF (Phospho-Thr526) Antibody. The picture on the right is blocked with the phospho peptide.



Immunohistochemistry analysis of paraffin-embedded human lung carcinoma, using ERF (Phospho-Thr526) Antibody. The picture on the right is blocked with the phospho peptide.