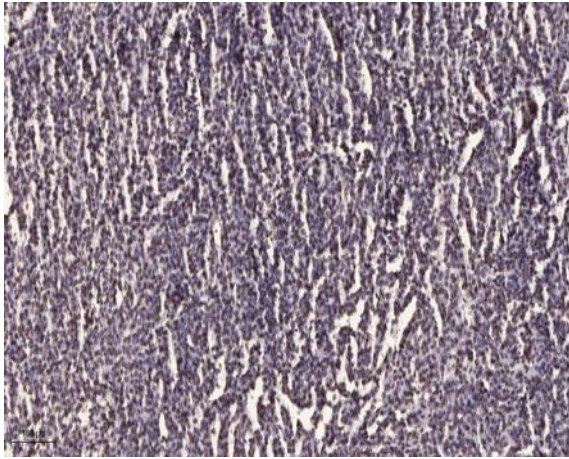


Ets-1 (phospho Ser251) Polyclonal Antibody

Catalog No :	YP1117
Reactivity :	Human;Mouse;Rat
Applications :	IHC;IF;ELISA
Target :	Ets-1
Fields :	>>Ras signaling pathway;>>Cellular senescence;>>Human T-cell leukemia virus 1 infection;>>Pathways in cancer;>>Renal cell carcinoma
Gene Name :	ETS1
Protein Name :	Protein C-ets-1
Human Gene Id :	2113
Human Swiss Prot No :	P14921
Mouse Gene Id :	23871
Mouse Swiss Prot No :	P27577
Rat Gene Id :	24356
Rat Swiss Prot No :	P41156
Immunogen :	Synthesized phospho-peptide around the phosphorylation site of human Ets-1 (phospho Ser251)
Specificity :	Phospho-Ets-1 (S251) Polyclonal Antibody detects endogenous levels of Ets-1 protein only when phosphorylated at S251.
Formulation :	Liquid in PBS containing 50% glycerol, 0.5% BSA and 0.02% sodium azide.
Source :	Polyclonal, Rabbit,IgG
Dilution :	IHC 1:100 - 1:300. ELISA: 1:40000.. IF 1:50-200

Purification :	The antibody was affinity-purified from rabbit antiserum by affinity-chromatography using epitope-specific immunogen.
Concentration :	1 mg/ml
Storage Stability :	-15°C to -25°C/1 year(Do not lower than -25°C)
Molecularweight :	50kD
Cell Pathway :	Dorso-ventral axis formation;Pathways in cancer;Renal cell carcinoma;
Background :	This gene encodes a member of the ETS family of transcription factors, which are defined by the presence of a conserved ETS DNA-binding domain that recognizes the core consensus DNA sequence GGAA/T in target genes. These proteins function either as transcriptional activators or repressors of numerous genes, and are involved in stem cell development, cell senescence and death, and tumorigenesis. Alternatively spliced transcript variants encoding different isoforms have been described for this gene.[provided by RefSeq, Jul 2011],
Function :	disease:ETS is responsible for erythroblast and fibroblast transformation. The juxtaposition of the interferon and c-ETS-1 proto-oncogene may be involved in the pathogenesis of human monocytic leukemia.,function:Transcription factor.,PTM:Sumoylated on Lys-15 and Lys-227, preferentially by SUMO2; which inhibits transcriptional activity.,PTM:Ubiquitinated; which induces proteasomal degradation.,similarity:Belongs to the ETS family.,similarity:Contains 1 ETS DNA-binding domain.,similarity:Contains 1 PNT (pointed) domain.,subunit:Interacts with MAF and MAFB (By similarity). Binds to DAXX. Interacts with UBE2I.,
Subcellular Location :	Cytoplasm . Nucleus . Delocalizes from nucleus to cytoplasm when coexpressed with isoform Ets-1 p27. .
Expression :	Highly expressed within lymphoid cells. Isoforms c-ETS-1A and Ets-1 p27 are both detected in all fetal tissues tested, but vary with tissue type in adult tissues. None is detected in brain or kidney.

Products Images



Immunohistochemical analysis of paraffin-embedded human brain tumor. 1, Antibody was diluted at 1:200(4° overnight). 2, Tris-EDTA,pH9.0 was used for antigen retrieval. 3,Secondary antibody was diluted at 1:200(room temperature, 45min).