

MOK (Phospho Tyr161) Polyclonal Antibody

Catalog No :	YP1236
Reactivity :	Human;Mouse;Rat
Applications :	IHC;IF;WB
Target :	RAGE
Gene Name :	MOK RAGE RAGE1
Protein Name :	MOK (Phospho-Tyr161)
Human Gene Id :	5891
Human Swiss Prot No :	Q9UQ07
Immunogen :	Synthesized peptide derived from human MOK (Phospho-Tyr161)
Specificity :	This antibody detects endogenous phospho levels of MOK (Phospho-Tyr161) at Human:Y161, Mouse:Y161, Rat:Y161
Formulation :	Liquid in PBS containing 50% glycerol, 0.5% BSA and 0.02% sodium azide.
Source :	Polyclonal, Rabbit,IgG
Dilution :	IHC 1:50-200, WB 1:500-2000. IF 1:50-200
Purification :	The antibody was affinity-purified from rabbit serum by affinity-chromatography using specific immunogen.
Concentration :	1 mg/ml
Storage Stability :	-15°C to -25°C/1 year(Do not lower than -25°C)
Observed Band :	48kD
Background :	MOK protein kinase(MOK) Homo sapiens This gene belongs to the MAP kinase superfamily. The gene was found to be regulated by caudal type transcription

factor 2 (Cdx2) protein. The encoded protein, which is localized to epithelial cells in the intestinal crypt, may play a role in growth arrest and differentiation of cells of upper crypt and lower villus regions. Multiple alternatively spliced transcript variants encoding different isoforms have been observed for this gene. [provided by RefSeq, Dec 2012],

Function :

catalytic activity:ATP + a protein = ADP + a phosphoprotein.,enzyme regulation:Phosphorylation appears to increase the enzymatic activity.,function:Able to phosphorylate several exogenous substrates and to undergo autophosphorylation.,PTM:Autophosphorylated.,similarity:Belongs to the protein kinase superfamily. CMGC Ser/Thr protein kinase family. CDC2/CDKX subfamily.,similarity:Contains 1 protein kinase domain.,tissue specificity:Expressed in heart, brain, lung, kidney, and pancreas, and at very low levels in placenta, liver and skeletal muscle. Detected in retina.,

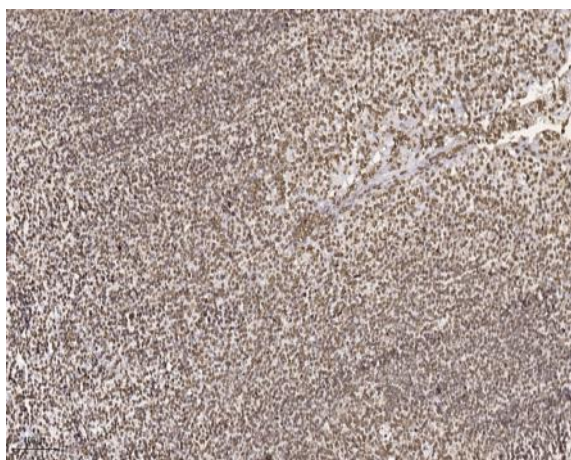
Subcellular Location :

Cytoplasm . Cell projection, cilium . Nucleus .

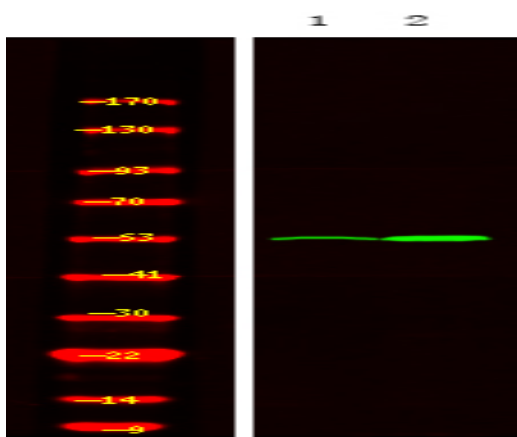
Expression :

Expressed in heart, brain, lung, kidney, and pancreas, and at very low levels in placenta, liver and skeletal muscle. Detected in retina.

Products Images



Immunohistochemical analysis of paraffin-embedded human tonsil. 1, Tris-EDTA,pH9.0 was used for antigen retrieval. 2 Antibody was diluted at 1:200(4° overnight.3,Secondary antibody was diluted at 1:200(room temperature, 45min).



Western Blot analysis of 1 HeLa cell, 2 LPS 100ng/mL 30min treated ,using primary antibody at 1:1000 dilution. Secondary antibody(catalog#:RS23920) was diluted at 1:10000