

Rabphilin-3A (phospho Ser237) Polyclonal Antibody

| | |
|------------------------------|--|
| Catalog No : | YP0891 |
| Reactivity : | Human;Mouse;Rat |
| Applications : | WB;IHC;IF;ELISA |
| Target : | Rabphilin 3A |
| Gene Name : | RPH3A |
| Protein Name : | Rabphilin-3A |
| Human Gene Id : | 22895 |
| Human Swiss Prot No : | Q9Y2J0 |
| Mouse Gene Id : | 19894 |
| Mouse Swiss Prot No : | P47708 |
| Rat Gene Id : | 171039 |
| Rat Swiss Prot No : | P47709 |
| Immunogen : | The antiserum was produced against synthesized peptide derived from human Rabphilin 3A around the phosphorylation site of Ser237. AA range:203-252 |
| Specificity : | Phospho-Rabphilin-3A (S237) Polyclonal Antibody detects endogenous levels of Rabphilin-3A protein only when phosphorylated at S237. |
| Formulation : | Liquid in PBS containing 50% glycerol, 0.5% BSA and 0.02% sodium azide. |
| Source : | Polyclonal, Rabbit,IgG |
| Dilution : | WB 1:500 - 1:2000. IHC 1:100 - 1:300. IF 1:200 - 1:1000. ELISA: 1:10000. Not yet tested in other applications. |
| Purification : | The antibody was affinity-purified from rabbit antiserum by affinity- |

chromatography using epitope-specific immunogen.

Concentration : 1 mg/ml

Storage Stability : -15°C to -25°C/1 year (Do not lower than -25°C)

Observed Band : 75kD

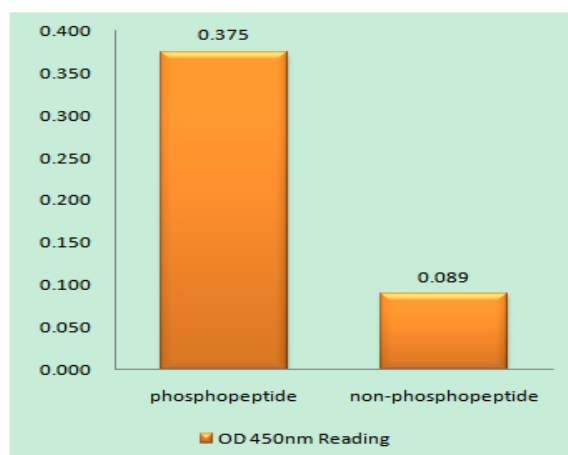
Background : Exocytosis of neurotransmitters and hormones is fundamental to synaptic neurotransmission and cell-cell communication. RAB3A (MIM 179390) is a small G protein that is thought to act at late stages of exocytosis, and RPH3A is a RAB3A effector (Lin et al., 2007 [PubMed 17149709]). [supplied by OMIM, Jul 2008],

Function : function:Protein transport. Probably involved with Ras-related protein Rab-3A in synaptic vesicle traffic and/or synaptic vesicle fusion. Could play a role in neurotransmitter release by regulating membrane flow in the nerve terminal., similarity:Contains 1 FYVE-type zinc finger., similarity:Contains 1 RabBD (Rab-binding) domain., similarity:Contains 2 C2 domains.,

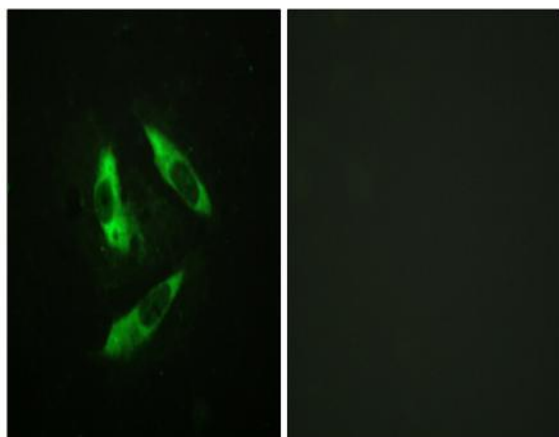
Subcellular Location : Cytoplasmic vesicle, secretory vesicle, synaptic vesicle membrane . Cell projection, dendritic spine . Cell junction, synapse, postsynaptic cell membrane . Membrane ; Peripheral membrane protein .

Expression : Brain, Lung,

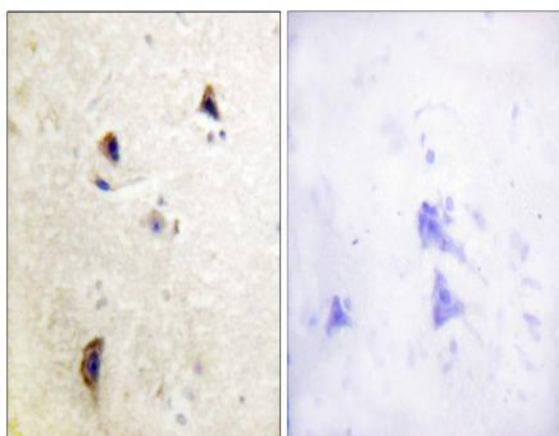
Products Images



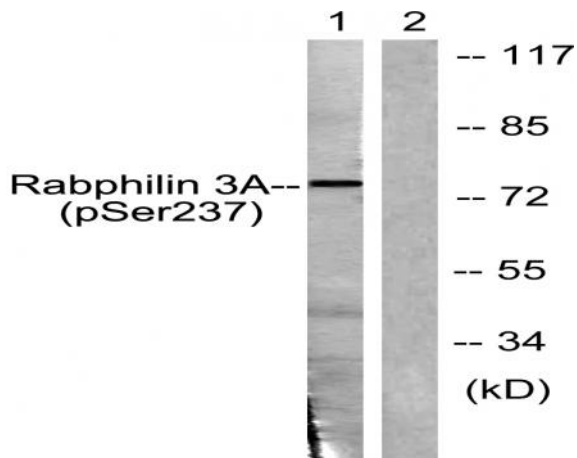
Enzyme-Linked Immunosorbent Assay (Phospho-ELISA) for Immunogen Phosphopeptide (Phospho-left) and Non-Phosphopeptide (Phospho-right), using Rabphilin 3A (Phospho-Ser237) Antibody



Immunofluorescence analysis of HeLa cells, using Rabphilin 3A (Phospho-Ser237) Antibody. The picture on the right is blocked with the phospho peptide.



Immunohistochemistry analysis of paraffin-embedded human brain, using Rabphilin 3A (Phospho-Ser237) Antibody. The picture on the right is blocked with the phospho peptide.



Western blot analysis of lysates from RAW264.7 cells treated with Calyculin 100nM 15', using Rabphilin 3A (Phospho-Ser237) Antibody. The lane on the right is blocked with the phospho peptide.