

Rrn3 (phospho Ser649) Polyclonal Antibody

Catalog No :	YP0834
Reactivity :	Human;Rat;Mouse;
Applications :	WB;IHC;IF;ELISA
Target :	TIF-IA
Gene Name :	RRN3
Protein Name :	RNA polymerase I-specific transcription initiation factor RRN3
Human Gene Id :	54700
Human Swiss Prot No :	Q9NYV6
Mouse Swiss Prot No :	B2RS91
Immunogen :	The antiserum was produced against synthesized peptide derived from human TIF-IA around the phosphorylation site of Ser649. AA range:602-651
Specificity :	Phospho-Rrn3 (S649) Polyclonal Antibody detects endogenous levels of Rrn3 protein only when phosphorylated at S649.
Formulation :	Liquid in PBS containing 50% glycerol, 0.5% BSA and 0.02% sodium azide.
Source :	Polyclonal, Rabbit,IgG
Dilution :	WB 1:500 - 1:2000. IHC 1:100 - 1:300. ELISA: 1:10000.. IF 1:50-200
Purification :	The antibody was affinity-purified from rabbit antiserum by affinity-chromatography using epitope-specific immunogen.
Concentration :	1 mg/ml
Storage Stability :	-15°C to -25°C/1 year(Do not lower than -25°C)
Observed Band :	70kD

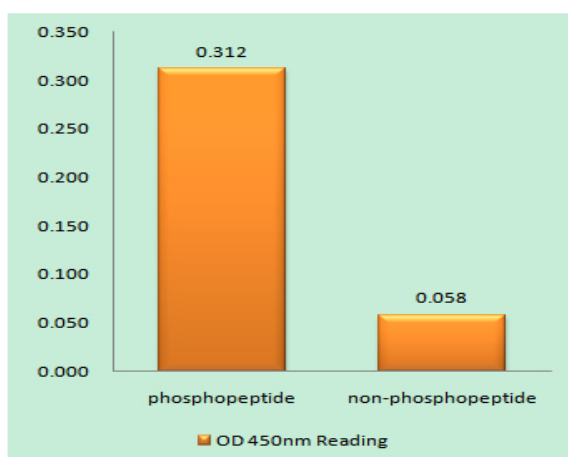
Background : function:Required for efficient transcription initiation by RNA polymerase I.,similarity:Belongs to the RRN3 family.,

Function : function:Required for efficient transcription initiation by RNA polymerase I.,similarity:Belongs to the RRN3 family.,

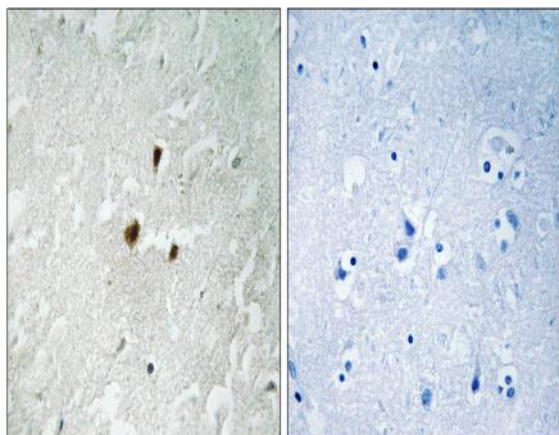
Subcellular Location : Nucleus, nucleolus .

Expression : Hippocampus,Kidney,Pooled,Spleen,

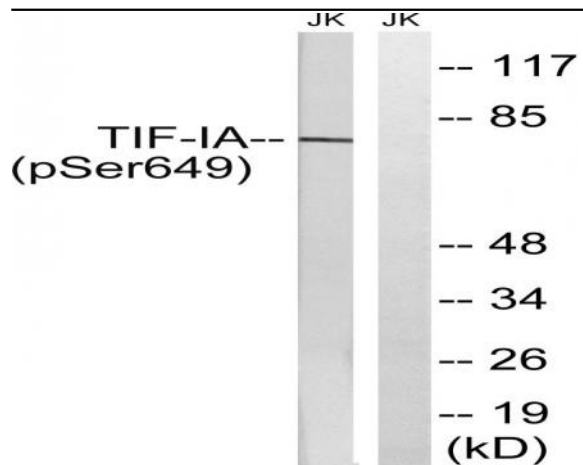
Products Images



Enzyme-Linked Immunosorbent Assay (Phospho-ELISA) for Immunogen Phosphopeptide (Phospho-left) and Non-Phosphopeptide (Phospho-right), using TIF-IA (Phospho-Ser649) Antibody



Immunohistochemistry analysis of paraffin-embedded human brain, using TIF-IA (Phospho-Ser649) Antibody. The picture on the right is blocked with the phospho peptide.



Western blot analysis of lysates from Jurkat cells treated with starved 24h, using TIF-IA (Phospho-Ser649) Antibody. The lane on the right is blocked with the phospho peptide.