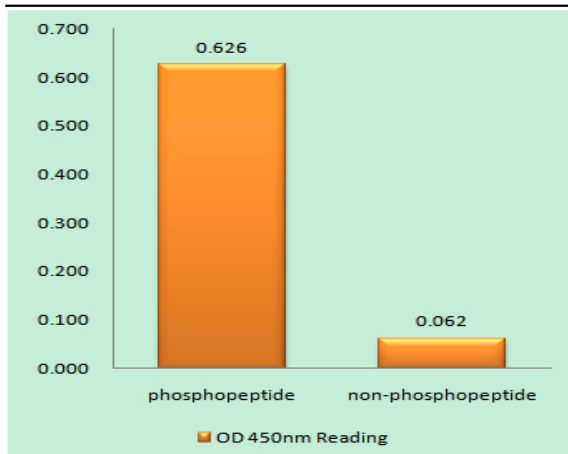


**MLC-2 (phospho Thr17/S18) Polyclonal Antibody**

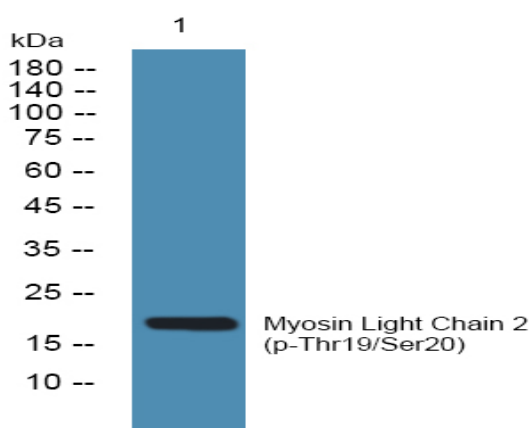
<b>Catalog No :</b>	YP0957
<b>Reactivity :</b>	Human;Mouse;Rat
<b>Applications :</b>	IHC;IF;ELISA
<b>Target :</b>	MLC-2
<b>Fields :</b>	>>Axon guidance;>>Focal adhesion;>>Tight junction;>>Platelet activation;>>Leukocyte transendothelial migration;>>Regulation of actin cytoskeleton;>>Shigellosis;>>Salmonella infection
<b>Gene Name :</b>	MYL12A
<b>Protein Name :</b>	Myosin regulatory light chain 12A
<b>Human Gene Id :</b>	10398/10627
<b>Human Swiss Prot No :</b>	P19105/O14950/P24844
<b>Mouse Gene Id :</b>	67938/98932
<b>Rat Gene Id :</b>	50685/296313
<b>Rat Swiss Prot No :</b>	P18666/Q64122
<b>Immunogen :</b>	The antiserum was produced against synthesized peptide derived from human MLC-2 around the phosphorylation site of Thr17 and Ser18. AA range:5-54
<b>Specificity :</b>	Phospho-MLC-2 (T17/S18) Polyclonal Antibody detects endogenous levels of MLC-2 protein only when phosphorylated at T17/S18.
<b>Formulation :</b>	Liquid in PBS containing 50% glycerol, 0.5% BSA and 0.02% sodium azide.
<b>Source :</b>	Polyclonal, Rabbit,IgG
<b>Dilution :</b>	IHC 1:100 - 1:300. ELISA: 1:10000.. IF 1:50-200

<b>Purification :</b>	The antibody was affinity-purified from rabbit antiserum by affinity-chromatography using epitope-specific immunogen.
<b>Concentration :</b>	1 mg/ml
<b>Storage Stability :</b>	-15°C to -25°C/1 year(Do not lower than -25°C)
<b>Molecularweight :</b>	20kD
<b>Cell Pathway :</b>	Focal adhesion;Tight junction;Leukocyte transendothelial migration;Regulates Actin and Cytoskeleton;
<b>Background :</b>	This gene encodes a nonsarcomeric myosin regulatory light chain. This protein is activated by phosphorylation and regulates smooth muscle and non-muscle cell contraction. This protein may also be involved in DNA damage repair by sequestering the transcriptional regulator apoptosis-antagonizing transcription factor (AATF)/Che-1 which functions as a repressor of p53-driven apoptosis. Alternate splicing results in multiple transcript variants. A pseudogene of this gene is found on chromosome 8.[provided by RefSeq, Dec 2014],
<b>Function :</b>	function:Myosin regulatory subunit that plays an important role in regulation of both smooth muscle and nonmuscle cell contractile activity via its phosphorylation. Implicated in cytokinesis, receptor capping, and cell locomotion.,miscellaneous:This chain binds calcium.,PTM:Phosphorylation increases the actin-activated myosin ATPase activity and thereby regulates the contractile activity. It is required to generate the driving force in the migration of the cells but not necessary for localization of myosin-2 at the leading edge.,similarity:Contains 3 EF-hand domains.,subunit:Myosin is an hexamer of 2 heavy chains and 4 light chains.,
<b>Subcellular Location :</b>	stress fiber,cytosol,brush border,myosin complex,myosin II complex,Z disc,apical part of cell,extracellular exosome,
<b>Expression :</b>	Coronary artery,Epithelium,Placenta,Skeletal muscle,Skin,Testis,

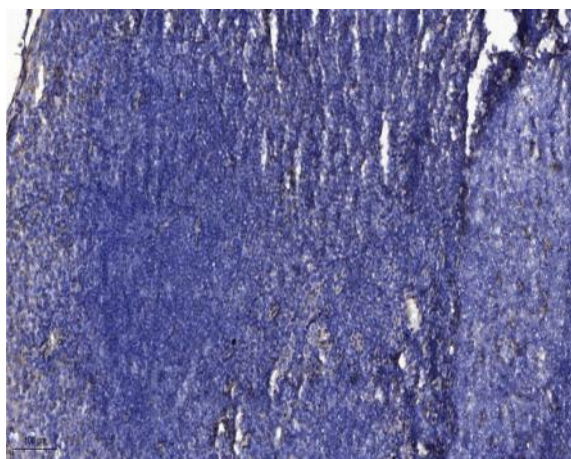
## Products Images



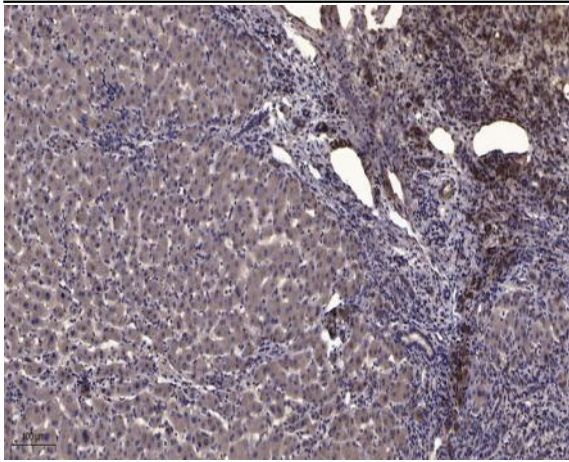
Enzyme-Linked Immunosorbent Assay (Phospho-ELISA) for Immunogen Phosphopeptide (Phospho-left) and Non-Phosphopeptide (Phospho-right), using MLC-2 (Phospho-Thr17+Ser18) Antibody



Western blot analysis of lysates from SW480 cells, primary antibody was diluted at 1:1000, 4° over night



Immunohistochemical analysis of paraffin-embedded human tonsil. 1, Antibody was diluted at 1:200(4° overnight). 2, Tris-EDTA,pH9.0 was used for antigen retrieval. 3,Secondary antibody was diluted at 1:200(room temperature, 30min).



Immunohistochemical analysis of paraffin-embedded human liver cancer. 1, Antibody was diluted at 1:200(4° overnight). 2, Tris-EDTA,pH9.0 was used for antigen retrieval. 3,Secondary antibody was diluted at 1:200(room temperature, 45min).