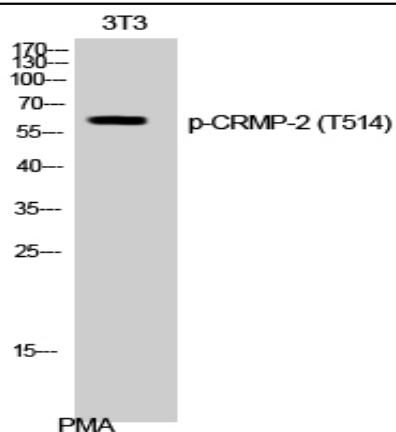


## CRMP-2 (phospho Thr514) Polyclonal Antibody

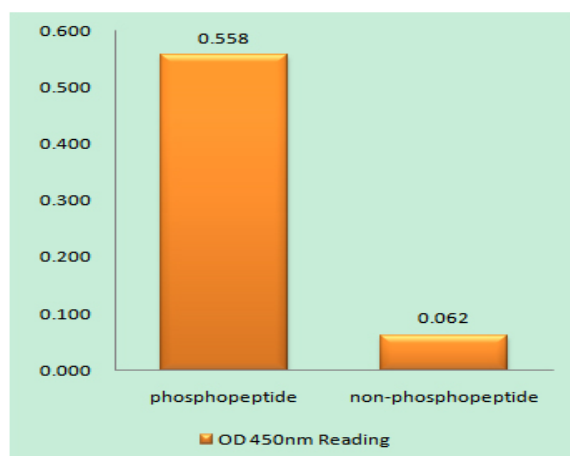
<b>Catalog No :</b>	YP0947
<b>Reactivity :</b>	Human;Mouse;Rat
<b>Applications :</b>	WB;IHC;IF;ELISA
<b>Target :</b>	CRMP-2
<b>Fields :</b>	>>Axon guidance
<b>Gene Name :</b>	DPYSL2
<b>Protein Name :</b>	Dihydropyrimidinase-related protein 2
<b>Human Gene Id :</b>	1808
<b>Human Swiss Prot No :</b>	Q16555
<b>Mouse Gene Id :</b>	12934
<b>Mouse Swiss Prot No :</b>	O08553
<b>Rat Gene Id :</b>	25416
<b>Rat Swiss Prot No :</b>	P47942
<b>Immunogen :</b>	The antiserum was produced against synthesized peptide derived from human DRP-2 around the phosphorylation site of Thr514. AA range:480-529
<b>Specificity :</b>	Phospho-CRMP-2 (T514) Polyclonal Antibody detects endogenous levels of CRMP-2 protein only when phosphorylated at T514.
<b>Formulation :</b>	Liquid in PBS containing 50% glycerol, 0.5% BSA and 0.02% sodium azide.
<b>Source :</b>	Polyclonal, Rabbit,IgG
<b>Dilution :</b>	WB 1:500 - 1:2000. IHC 1:100 - 1:300. IF 1:200 - 1:1000. ELISA: 1:5000. Not yet tested in other applications.

<b>Purification :</b>	The antibody was affinity-purified from rabbit antiserum by affinity-chromatography using epitope-specific immunogen.
<b>Concentration :</b>	1 mg/ml
<b>Storage Stability :</b>	-15°C to -25°C/1 year(Do not lower than -25°C)
<b>Observed Band :</b>	65kD
<b>Cell Pathway :</b>	Axon guidance;
<b>Background :</b>	This gene encodes a member of the collapsin response mediator protein family. Collapsin response mediator proteins form homo- and hetero-tetramers and facilitate neuron guidance, growth and polarity. The encoded protein promotes microtubule assembly and is required for Sema3A-mediated growth cone collapse, and also plays a role in synaptic signaling through interactions with calcium channels. This gene has been implicated in multiple neurological disorders, and hyperphosphorylation of the encoded protein may play a key role in the development of Alzheimer's disease. Alternatively spliced transcript variants encoding multiple isoforms have been observed for this gene. [provided by RefSeq, Sep 2011],
<b>Function :</b>	function:Necessary for signaling by class 3 semaphorins and subsequent remodeling of the cytoskeleton. Plays a role in axon guidance, neuronal growth cone collapse and cell migration.,PTM:3F4, a monoclonal antibody which strongly stains neurofibrillary tangles in Alzheimer disease brains, specifically labels DPYSL2 when phosphorylated on Ser-518, Ser-522 and Thr-509.,similarity:Belongs to the DHOase family. Hydantoinase/dihydropyrimidinase subfamily.,subunit:Homotetramer, and heterotetramer with CRMP1, DPYSL3, DPYSL4 or DPYSL5 (By similarity). Interacts through its C-terminus with the C-terminus of CYFIP1/SRA1. Interacts with HTR4.,tissue specificity:Ubiquitous.,
<b>Subcellular Location :</b>	Cytoplasm, cytosol . Cytoplasm, cytoskeleton . Membrane . Tightly but non-covalently associated with membranes.
<b>Expression :</b>	Ubiquitous.

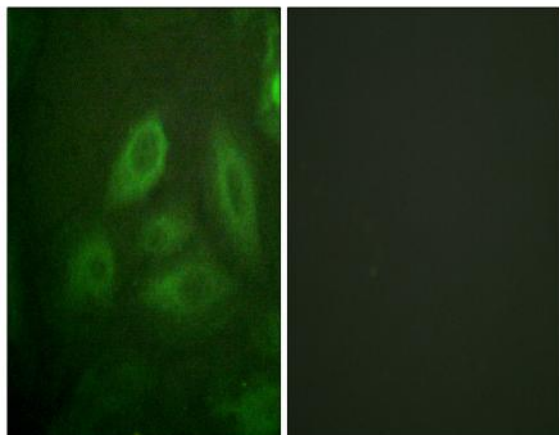
## Products Images



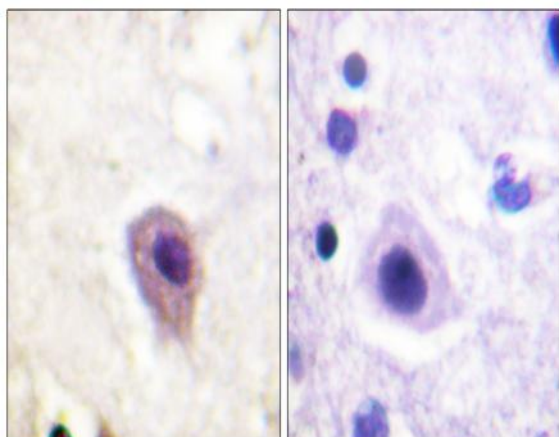
Western Blot analysis of 3T3 cells using Phospho-CRMP-2 (T514) Polyclonal Antibody



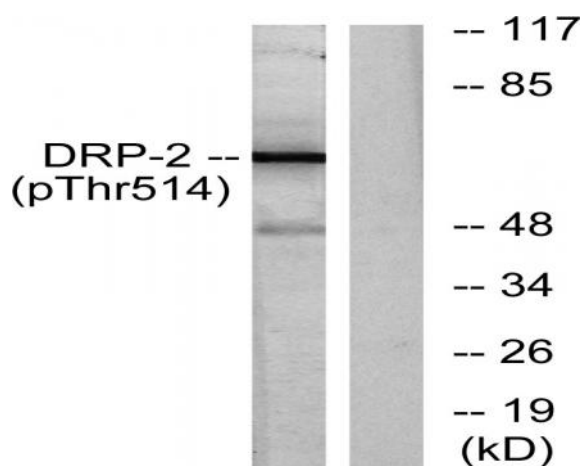
Enzyme-Linked Immunosorbent Assay (Phospho-ELISA) for Immunogen Phosphopeptide (Phospho-left) and Non-Phosphopeptide (Phospho-right), using DRP-2 (Phospho-Thr514) Antibody



Immunofluorescence analysis of HeLa cells, using DRP-2 (Phospho-Thr514) Antibody. The picture on the right is blocked with the phospho peptide.



Immunohistochemistry analysis of paraffin-embedded human brain, using DRP-2 (Phospho-Thr514) Antibody. The picture on the right is blocked with the phospho peptide.



Western blot analysis of lysates from NIH/3T3 cells treated with PMA 125ng/ml 30', using DRP-2 (Phospho-Thr514) Antibody. The lane on the right is blocked with the phospho peptide.