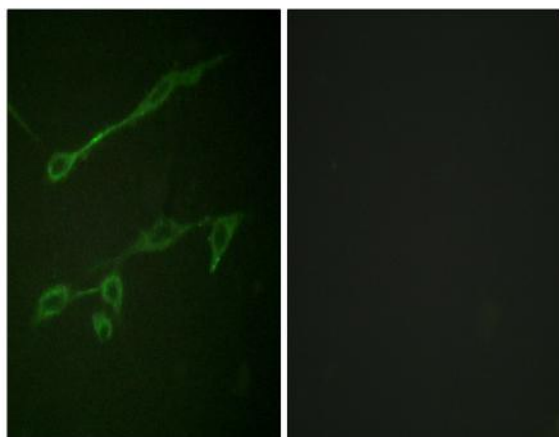


**Vav2 (phospho Tyr142) Polyclonal Antibody**

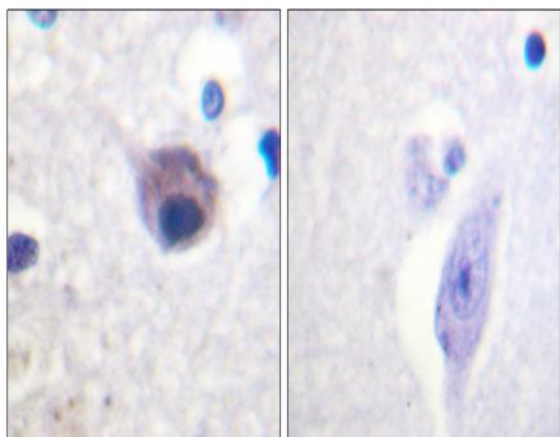
<b>Catalog No :</b>	YP0949
<b>Reactivity :</b>	Human;Mouse
<b>Applications :</b>	WB;IHC;IF;ELISA
<b>Target :</b>	VAV2
<b>Fields :</b>	>>Rap1 signaling pathway;>>cAMP signaling pathway;>>Chemokine signaling pathway;>>Focal adhesion;>>Natural killer cell mediated cytotoxicity;>>T cell receptor signaling pathway;>>B cell receptor signaling pathway;>>Fc epsilon RI signaling pathway;>>Fc gamma R-mediated phagocytosis;>>Leukocyte transendothelial migration;>>Regulation of actin cytoskeleton;>>Yersinia infection;>>Proteoglycans in cancer;>>Lipid and atherosclerosis
<b>Gene Name :</b>	VAV2
<b>Protein Name :</b>	Guanine nucleotide exchange factor VAV2
<b>Human Gene Id :</b>	7410
<b>Human Swiss Prot No :</b>	P52735
<b>Mouse Gene Id :</b>	22325
<b>Mouse Swiss Prot No :</b>	Q60992
<b>Immunogen :</b>	The antiserum was produced against synthesized peptide derived from human VAV2 around the phosphorylation site of Tyr142. AA range:108-157
<b>Specificity :</b>	Phospho-Vav2 (Y142) Polyclonal Antibody detects endogenous levels of Vav2 protein only when phosphorylated at Y142.
<b>Formulation :</b>	Liquid in PBS containing 50% glycerol, 0.5% BSA and 0.02% sodium azide.
<b>Source :</b>	Polyclonal, Rabbit,IgG
<b>Dilution :</b>	WB 1:500 - 1:2000. IHC 1:100 - 1:300. IF 1:200 - 1:1000. ELISA: 1:10000. Not yet tested in other applications.

<b>Purification :</b>	The antibody was affinity-purified from rabbit antiserum by affinity-chromatography using epitope-specific immunogen.
<b>Concentration :</b>	1 mg/ml
<b>Storage Stability :</b>	-15°C to -25°C/1 year(Do not lower than -25°C)
<b>Observed Band :</b>	101kD
<b>Cell Pathway :</b>	Regulation of Actin Dynamics; AMPK
<b>Background :</b>	VAV2 is the second member of the VAV guanine nucleotide exchange factor family of oncogenes. Unlike VAV1, which is expressed exclusively in hematopoietic cells, VAV2 transcripts were found in most tissues. Alternatively spliced transcript variants encoding different isoforms have been found for this gene. [provided by RefSeq, Aug 2008],
<b>Function :</b>	function:Guanine nucleotide exchange factor for the Rho family of Ras-related GTPases.,similarity:Contains 1 CH (calponin-homology) domain.,similarity:Contains 1 DH (DBL-homology) domain.,similarity:Contains 1 PH domain.,similarity:Contains 1 phorbol-ester/DAG-type zinc finger.,similarity:Contains 1 SH2 domain.,similarity:Contains 2 SH3 domains.,tissue specificity:Widely expressed.,
<b>Subcellular Location :</b>	cytosol,plasma membrane,
<b>Expression :</b>	Widely expressed.

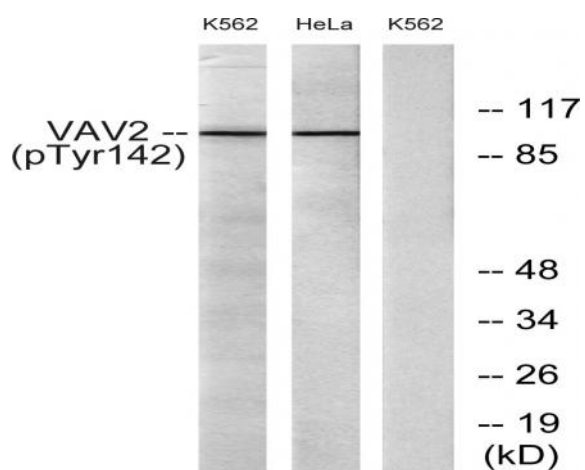
## Products Images



Immunofluorescence analysis of NIH/3T3 cells, using VAV2 (Phospho-Tyr142) Antibody. The picture on the right is blocked with the phospho peptide.



Immunohistochemistry analysis of paraffin-embedded human brain, using VAV2 (Phospho-Tyr142) Antibody. The picture on the right is blocked with the phospho peptide.



Western blot analysis of lysates from HeLa cells and K562 cells treated with TNF 20ng/ml 30', using VAV2 (Phospho-Tyr142) Antibody. The lane on the right is blocked with the phospho peptide.