

Vimentin (PT0002R) rabbit mAb

| | |
|------------------------------|--|
| Catalog No : | YM7038 |
| Reactivity : | Human;Mouse (predicted: Rat) |
| Applications : | IHC;WB;ELISA |
| Target : | Vimentin |
| Fields : | >>Epstein-Barr virus infection;>>MicroRNAs in cancer |
| Gene Name : | vim |
| Human Gene Id : | 7431 |
| Human Swiss Prot No : | P08670 |
| Mouse Swiss Prot No : | P20152 |
| Immunogen : | Synthesized peptide derived from human protein. AA range:400-466 |
| Specificity : | endogenous |
| Formulation : | PBS, 50% glycerol, 0.05% Proclin 300, 0.05%BSA |
| Source : | Monoclonal Rabbit IgG1, Kappa |
| Dilution : | IHC 1:100-500 WB 1:500-2000 ELISA: 1:20000 |
| Purification : | Protein A |
| Storage Stability : | -15°C to -25°C/1 year(Do not lower than -25°C) |
| Molecularweight : | 54kD |
| Observed Band : | 54kD |
| Background : | This gene encodes a member of the intermediate filament family. Intermediate |

filamentous, along with microtubules and actin microfilaments, make up the cytoskeleton. The protein encoded by this gene is responsible for maintaining cell shape, integrity of the cytoplasm, and stabilizing cytoskeletal interactions. It is also involved in the immune response, and controls the transport of low-density lipoprotein (LDL)-derived cholesterol from a lysosome to the site of esterification. It functions as an organizer of a number of critical proteins involved in attachment, migration, and cell signaling. Mutations in this gene causes a dominant, pulverulent cataract.[provided by RefSeq, Jun 2009],

Function :

function:Vimentins are class-III intermediate filaments found in various non-epithelial cells, especially mesenchymal cells.,online information:Vimentin entry,PTM:One of the most prominent phosphoproteins in various cells of mesenchymal origin. Phosphorylation is enhanced during cell division, at which time vimentin filaments are significantly reorganized.,sequence caution:Intron retention.,similarity:Belongs to the intermediate filament family.,subunit:Homopolymer. Interacts with HCV core protein. Interacts with LGSN and SYNM.,tissue specificity:Highly expressed in fibroblasts, some expression in T- and B-lymphocytes, and little or no expression in Burkitt's lymphoma cell lines. Expressed in many hormone-independent mammary carcinoma cell lines.,

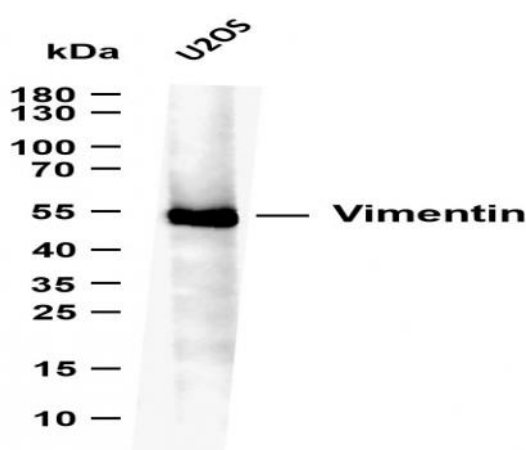
Subcellular Location :

Cytoplasmic

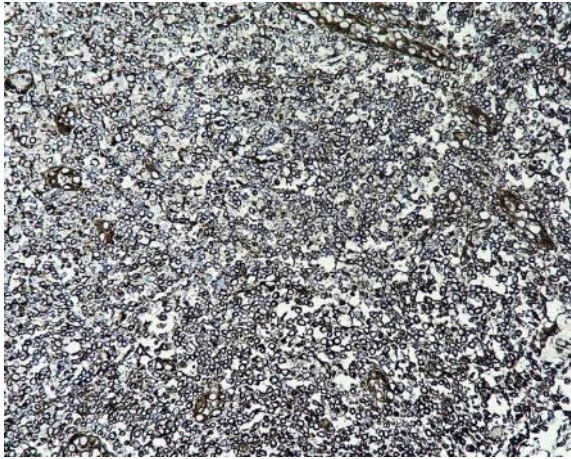
Expression :

Highly expressed in fibroblasts, some expression in T- and B-lymphocytes, and little or no expression in Burkitt's lymphoma cell lines. Expressed in many hormone-independent mammary carcinoma cell lines.

Products Images



Whole cell lysates were separated by 10% SDS-PAGE, and the membrane was blotted with anti-Vimentin (PT0002R) antibody. The HRP-conjugated Goat anti-Rabbit IgG(H + L) antibody was used to detect the antibody. Lane 1:U2OS Predicted band size: 54kDa Observed band size: 54kDa



Human tonsil tissue was stained with Anti-Vimentin (PT0002R) rabbit Antibody