

Dematin (phospho Ser403) Polyclonal Antibody

Catalog No :	YP0737
Reactivity :	Human;Mouse
Applications :	WB;IHC;IF;ELISA
Target :	Dematin
Gene Name :	EPB49
Protein Name :	Dematin
Human Gene Id :	2039
Human Swiss Prot No :	Q08495
Mouse Gene Id :	13829
Mouse Swiss Prot No :	Q9WV69
Immunogen :	The antiserum was produced against synthesized peptide derived from human Dematin around the phosphorylation site of Ser403. AA range:356-405
Specificity :	Phospho-Dematin (S403) Polyclonal Antibody detects endogenous levels of Dematin protein only when phosphorylated at S403.
Formulation :	Liquid in PBS containing 50% glycerol, 0.5% BSA and 0.02% sodium azide.
Source :	Polyclonal, Rabbit,IgG
Dilution :	WB 1:500 - 1:2000. IHC 1:100 - 1:300. ELISA: 1:10000.. IF 1:50-200
Purification :	The antibody was affinity-purified from rabbit antiserum by affinity-chromatography using epitope-specific immunogen.
Concentration :	1 mg/ml
Storage Stability :	-15°C to -25°C/1 year(Do not lower than -25°C)

Observed Band : 55kD

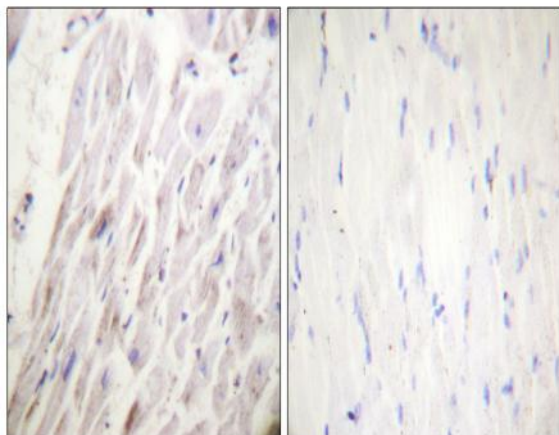
Background : The protein encoded by this gene is an actin binding and bundling protein that plays a structural role in erythrocytes, by stabilizing and attaching the spectrin/actin cytoskeleton to the erythrocyte membrane in a phosphorylation-dependent manner. This protein contains a core domain in the N-terminus, and a headpiece domain in the C-terminus that binds F-actin. When purified from erythrocytes, this protein exists as a trimer composed of two 48 kDa polypeptides and a 52 kDa polypeptide. The different subunits arise from alternative splicing in the 3' coding region, where the headpiece domain is located. Disruption of this gene has been correlated with the autosomal dominant Marie Unna hereditary hypotrichosis disease, while loss of heterozygosity of this gene is thought to play a role in prostate cancer progression. Alternative splicing results in multiple transcript variants encoding di

Function : domain:Consists of a large core fragment, the amino-terminal portion, and a small headpiece, the C-terminal portion. The headpiece can bind but cannot bundle actin filaments.,domain:Contains at least two actin-binding sites, one in the headpiece domain and one in the amino-terminal portion.,function:Actin-bundling protein. May function in mitogen-activated protein kinase pathway.,PTM:Actin-bundling activity is abolished upon phosphorylation by cAMP-dependent protein kinase.,PTM:The N-terminus is blocked.,similarity:Belongs to the villin/gelsolin family.,similarity:Contains 1 HP (headpiece) domain.,subunit:Exists in solution as a trimer of two short isoforms and one long isoform linked by disulfide bonds (Probable). Interacts with RASGRF2.,tissue specificity:Heart, brain, lung, skeletal muscle, and kidney.,

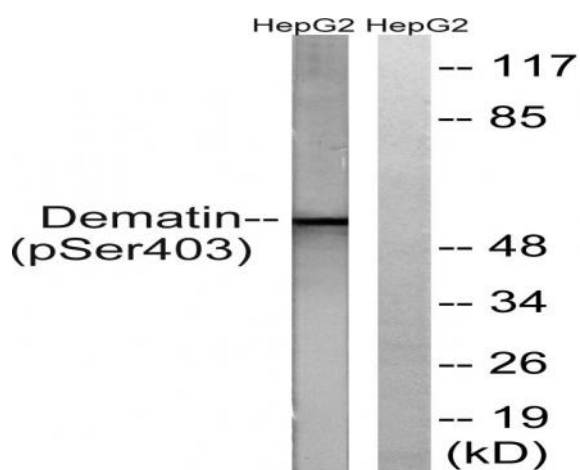
Subcellular Location : Cytoplasm. Cytoplasm, cytosol. Cytoplasm, perinuclear region . Cytoplasm, cytoskeleton. Cell membrane. Membrane . Endomembrane system. Cell projection . Localized at the spectrin-actin junction of erythrocyte plasma membrane. Localized to intracellular membranes and the cytoskeletal network. Localized at intracellular membrane-bounded organelle compartment in platelets that likely represent the dense tubular network membrane. Detected at the cell membrane and at the parasitophorous vacuole in malaria-infected erythrocytes at late stages of plasmodium berghei or falciparum development.

Expression : Expressed in platelets (at protein level). Expressed in heart, brain, lung, skeletal muscle, and kidney.

Products Images



Immunohistochemistry analysis of paraffin-embedded human heart, using Dematin (Phospho-Ser403) Antibody. The picture on the right is blocked with the phospho peptide.



Western blot analysis of lysates from HepG2 cells treated with Insulin 0.01U/ml 15', using Dematin (Phospho-Ser403) Antibody. The lane on the right is blocked with the phospho peptide.