

**c-Myc (phospho Ser62) Polyclonal Antibody**

<b>Catalog No :</b>	YP0861
<b>Reactivity :</b>	Human;Mouse;Rat
<b>Applications :</b>	WB;IHC;IF;ELISA
<b>Target :</b>	c-Myc
<b>Fields :</b>	>>MAPK signaling pathway;>>ErbB signaling pathway;>>Cell cycle;>>PI3K-Akt signaling pathway;>>Cellular senescence;>>Wnt signaling pathway;>>TGF-beta signaling pathway;>>Hippo signaling pathway;>>Signaling pathways regulating pluripotency of stem cells;>>JAK-STAT signaling pathway;>>Thyroid hormone signaling pathway;>>Salmonella infection;>>Hepatitis C;>>Hepatitis B;>>Human cytomegalovirus infection;>>Human T-cell leukemia virus 1 infection;>>Kaposi sarcoma-associated herpesvirus infection;>>Epstein-Barr virus infection;>>Pathways in cancer;>>Transcriptional misregulation in cancer;>>Proteoglycans in cancer;>>MicroRNAs in cancer;>>Chemical carcinogenesis - receptor activation;>>Colorectal cancer;>>Endometrial cancer;>>Thyroid cancer;>>Bladder cancer;>>Chronic myeloid leukemia;>>Acute myeloid leukemia;>>Small cell lung cancer;>>Breast cancer;>>Hepatocellular carcinoma;>>Gastric cancer;>>Central carbon metabolism in cancer
<b>Gene Name :</b>	MYC
<b>Protein Name :</b>	Myc proto-oncogene protein
<b>Human Gene Id :</b>	4609
<b>Human Swiss Prot No :</b>	P01106
<b>Mouse Gene Id :</b>	17869
<b>Mouse Swiss Prot No :</b>	P01108
<b>Rat Gene Id :</b>	24577
<b>Rat Swiss Prot No :</b>	P09416

<b>Immunogen :</b>	The antiserum was produced against synthesized peptide derived from human Myc around the phosphorylation site of Ser62. AA range:31-80
<b>Specificity :</b>	Phospho-c-Myc (S62) Polyclonal Antibody detects endogenous levels of c-Myc protein only when phosphorylated at S62.
<b>Formulation :</b>	Liquid in PBS containing 50% glycerol, 0.5% BSA and 0.02% sodium azide.
<b>Source :</b>	Polyclonal, Rabbit,IgG
<b>Dilution :</b>	WB 1:500 - 1:2000. IHC 1:100 - 1:300. IF 1:200 - 1:1000. ELISA: 1:40000. Not yet tested in other applications.
<b>Purification :</b>	The antibody was affinity-purified from rabbit antiserum by affinity-chromatography using epitope-specific immunogen.
<b>Concentration :</b>	1 mg/ml
<b>Storage Stability :</b>	-15°C to -25°C/1 year(Do not lower than -25°C)
<b>Observed Band :</b>	50,(also ~60KD in some samples)
<b>Cell Pathway :</b>	Stem cell pathway; Cell_Cycle_G1S;Cell_Cycle_G2M_DNA; WNT;WNT-T CELL;β-Catenin; ErbB/HER; MAPK_ERK_Growth;MAPK_G_Protein; PI3K/Akt; Protein_Acetylation
<b>Background :</b>	The protein encoded by this gene is a multifunctional, nuclear phosphoprotein that plays a role in cell cycle progression, apoptosis and cellular transformation. It functions as a transcription factor that regulates transcription of specific target genes. Mutations, overexpression, rearrangement and translocation of this gene have been associated with a variety of hematopoietic tumors, leukemias and lymphomas, including Burkitt lymphoma. There is evidence to show that alternative translation initiations from an upstream, in-frame non-AUG (CUG) and a downstream AUG start site result in the production of two isoforms with distinct N-termini. The synthesis of non-AUG initiated protein is suppressed in Burkitt's lymphomas, suggesting its importance in the normal function of this gene. [provided by RefSeq, Jul 2008],
<b>Function :</b>	disease:A chromosomal aberration involving MYC may be a cause of a form of B-cell chronic lymphocytic leukemia. Translocation t(8;12)(q24;q22) with BTG1.,disease:Overexpression of MYC is implicated in the etiology of a variety of hematopoietic tumors.,function:Participates in the regulation of gene transcription. Binds DNA both in a non-specific manner and also specifically to recognizes the core sequence 5'-CAC[GA]TG-3'. Seems to activate the transcription of growth-related genes.,online information:Myc entry,PTM:Phosphorylated by PRKDC.,similarity:Contains 1 basic helix-loop-helix (bHLH)

domain.,subunit:Efficient DNA binding requires dimerization with another bHLH protein. Binds DNA as a heterodimer with MAX. Interacts with TAF1C and SPAG9. Interacts with PARP10. Interacts with KDM5A and KDM5B.,

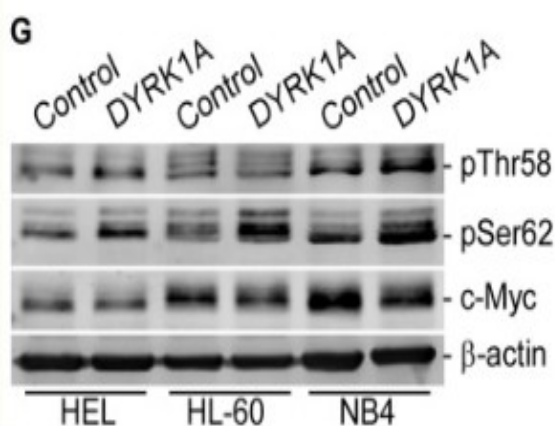
**Subcellular Location :**

Nucleus, nucleoplasm . Nucleus, nucleolus .

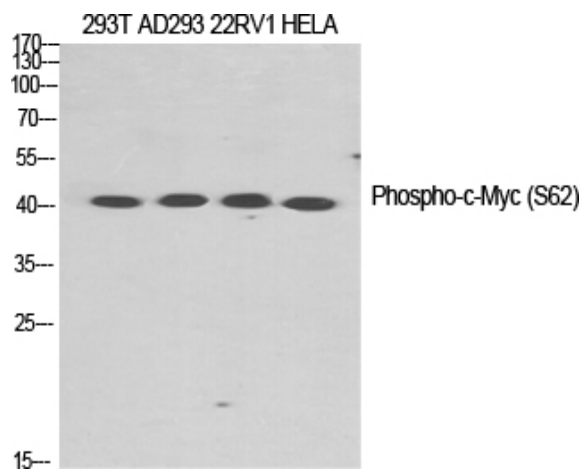
**Expression :**

Cervix,Epithelium,Leukemia,Placenta,Promyelocytic I

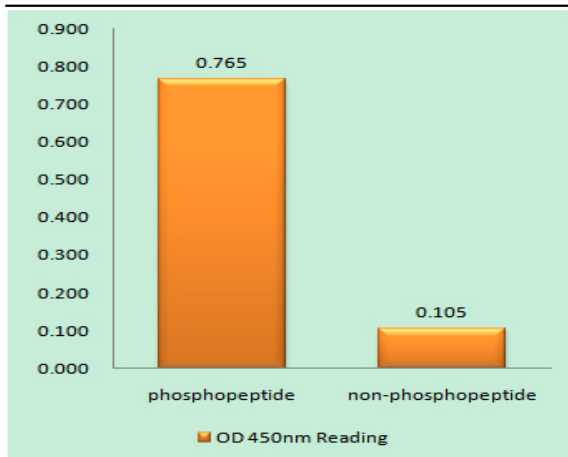
## Products Images



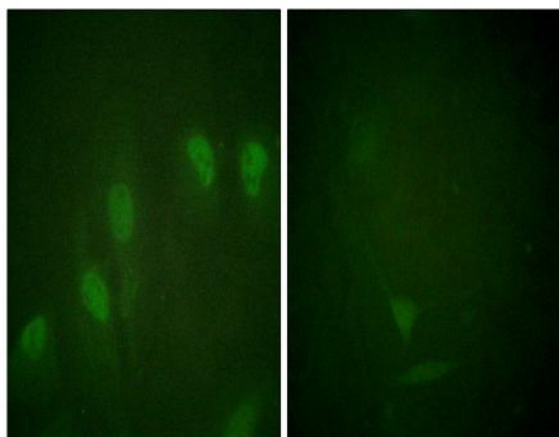
Liu, Qiang, et al. "Tumor suppressor DYRK1A effects on proliferation and chemoresistance of AML cells by downregulating c-Myc." *PloS one* 9.6 (2014): e98853.



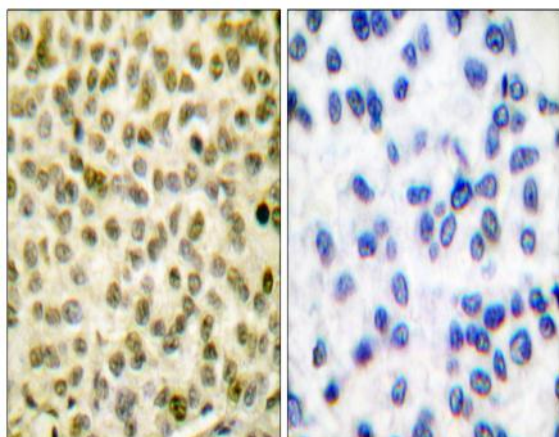
Western Blot analysis of various cells using Phospho-c-Myc (S62) Polyclonal Antibody diluted at 1:1000



Enzyme-Linked Immunosorbent Assay (Phospho-ELISA) for Immunogen Phosphopeptide (Phospho-left) and Non-Phosphopeptide (Phospho-right), using Myc (Phospho-Ser62) Antibody



Immunofluorescence analysis of HeLa cells treated with Forskolin 40nM 30', using Myc (Phospho-Ser62) Antibody. The picture on the right is blocked with the phospho peptide.



Immunohistochemistry analysis of paraffin-embedded human breast carcinoma, using Myc (Phospho-Ser62) Antibody. The picture on the right is blocked with the phospho peptide.