

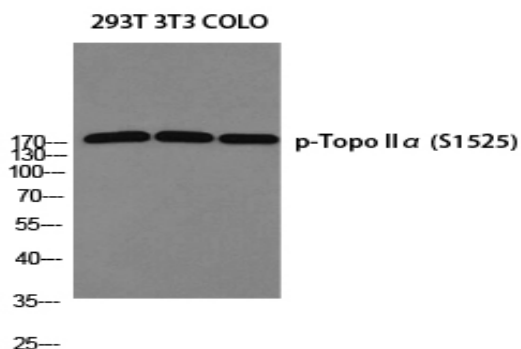
Topo IIa (phospho Ser1525) Polyclonal Antibody

Catalog No :	YP0836
Reactivity :	Human;Mouse;Rat
Applications :	WB;IHC;IF;ELISA
Target :	Topo IIa
Fields :	>>Platinum drug resistance
Gene Name :	TOP2A
Protein Name :	DNA topoisomerase 2-alpha
Human Gene Id :	7153
Human Swiss Prot No :	P11388
Mouse Gene Id :	21973
Mouse Swiss Prot No :	Q01320
Rat Gene Id :	360243
Rat Swiss Prot No :	P41516
Immunogen :	The antiserum was produced against synthesized peptide derived from human TOP2A around the phosphorylation site of Ser1525. AA range:1482-1531
Specificity :	Phospho-Topo IIa (S1525) Polyclonal Antibody detects endogenous levels of Topo IIa protein only when phosphorylated at S1525.
Formulation :	Liquid in PBS containing 50% glycerol, 0.5% BSA and 0.02% sodium azide.
Source :	Polyclonal, Rabbit,IgG
Dilution :	WB 1:500 - 1:2000. IHC 1:100 - 1:300. ELISA: 1:5000.. IF 1:50-200

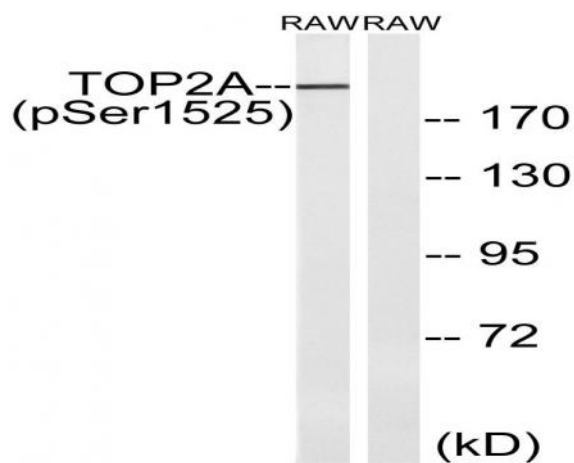
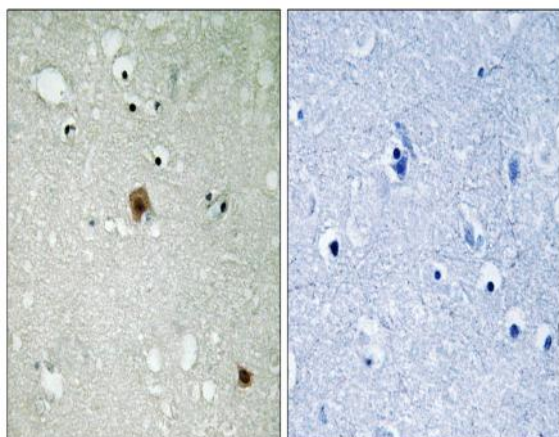
Purification :	The antibody was affinity-purified from rabbit antiserum by affinity-chromatography using epitope-specific immunogen.
Concentration :	1 mg/ml
Storage Stability :	-15°C to -25°C/1 year(Do not lower than -25°C)
Observed Band :	190kD
Background :	<p>This gene encodes a DNA topoisomerase, an enzyme that controls and alters the topologic states of DNA during transcription. This nuclear enzyme is involved in processes such as chromosome condensation, chromatid separation, and the relief of torsional stress that occurs during DNA transcription and replication. It catalyzes the transient breaking and rejoining of two strands of duplex DNA which allows the strands to pass through one another, thus altering the topology of DNA. Two forms of this enzyme exist as likely products of a gene duplication event. The gene encoding this form, alpha, is localized to chromosome 17 and the beta gene is localized to chromosome 3. The gene encoding this enzyme functions as the target for several anticancer agents and a variety of mutations in this gene have been associated with the development of drug resistance. Reduced activity of this enzyme may also pla</p>
Function :	<p>catalytic activity:ATP-dependent breakage, passage and rejoining of double-stranded DNA.,enzyme regulation:Specifically inhibited by the intercalating agent amsacrine.,function:Control of topological states of DNA by transient breakage and subsequent rejoining of DNA strands. Topoisomerase II makes double-strand breaks.,miscellaneous:Eukaryotic topoisomerase I and II can relax both negative and positive supercoils, whereas prokaryotic enzymes relax only negative supercoils.,PTM:Phosphorylation has no effect on catalytic activity.,similarity:Belongs to the type II topoisomerase family.,subcellular location:Generally located in the nucleoplasm.,subunit:Homodimer. Interacts with COPS5.,</p>
Subcellular Location :	Cytoplasm . Nucleus, nucleoplasm . Nucleus . Nucleus, nucleolus .
Expression :	Expressed in the tonsil, spleen, lymph node, thymus, skin, pancreas, testis, colon, kidney, liver, brain and lung (PubMed:9155056). Also found in high-grade lymphomas, squamous cell lung tumors and seminomas (PubMed:9155056).

Products Images

Western blot analysis of 293T 3T3 COLO using p-Topo II α (S1525) antibody. Antibody was diluted at 1:1000



Immunohistochemistry analysis of paraffin-embedded human brain, using TOP2A (Phospho-Ser1525) Antibody. The picture on the right is blocked with the phospho peptide.



Western blot analysis of lysates from RAW264.7 cells treated with TNF 20ng/ml 5', using TOP2A (Phospho-Ser1525) Antibody. The lane on the right is blocked with the phospho peptide.