

## FRP-2 Polyclonal Antibody

<b>Catalog No :</b>	YT1790
<b>Reactivity :</b>	Human,Mouse,Rat
<b>Applications :</b>	WB,ELISA
<b>Gene Name :</b>	SFRP2
<b>Protein Name :</b>	Secreted frizzled-related protein 2
<b>Human Gene Id :</b>	6423
<b>Human Swiss Prot No :</b>	Q96HF1
<b>Mouse Gene Id :</b>	20319
<b>Mouse Swiss Prot No :</b>	P97299
<b>Immunogen :</b>	The antiserum was produced against synthesized peptide derived from human SFRP2. AA range:119-168
<b>Specificity :</b>	FRP-2 Polyclonal Antibody detects endogenous levels of FRP-2 protein.
<b>Formulation :</b>	Liquid in PBS containing 50% glycerol, 0.5% BSA and 0.02% sodium azide.
<b>Source :</b>	Rabbit
<b>Dilution :</b>	Western Blot: 1/500 - 1/2000. ELISA: 1/5000. Not yet tested in other applications.
<b>Purification :</b>	The antibody was affinity-purified from rabbit antiserum by affinity-chromatography using epitope-specific immunogen.
<b>Concentration :</b>	1 mg/ml
<b>Storage Stability :</b>	-20°C/1 year
<b>Molecularweight :</b>	33490

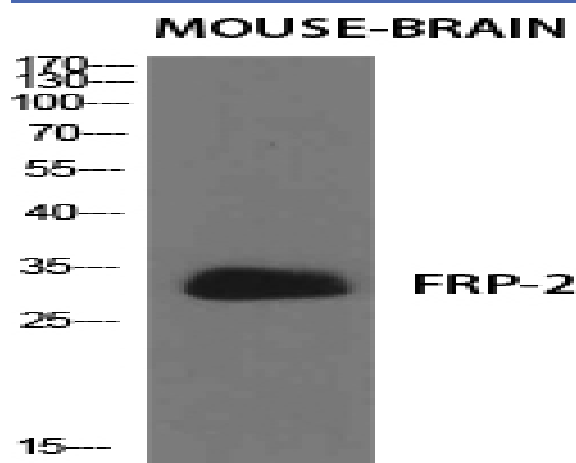
**Observed Band :** 30

**Cell Pathway :** WNT,WNT-T CELL

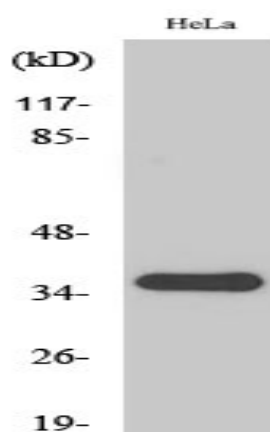
**Background :** SFRP2 encodes a member of the SFRP family that contains a cysteine-rich domain homologous to the putative Wnt-binding site of Frizzled proteins. SFRPs act as soluble modulators of Wnt signaling. Methylation of SFRP2 is a potential marker for the presence of colorectal cancer.

**Function :** somitogenesis, regionalization, cell surface receptor linked signal transduction, pattern specificat

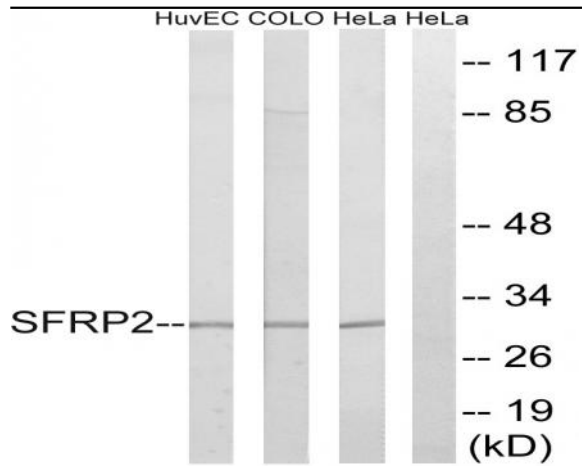
## Products Images



Western Blot analysis of various cells using FRP-2 Polyclonal Antibody diluted at 1:500



Western Blot analysis of HuvEc cells using FRP-2 Polyclonal Antibody diluted at 1:500



Western blot analysis of lysates from HeLa, COLO, and HUVEC cells, using SFRP2 Antibody. The lane on the right is blocked with the synthesized peptide.