

KIF2C (phospho Ser95) Polyclonal Antibody

Catalog No :	YP0566
Reactivity :	Human;Mouse
Applications :	WB;IHC
Target :	KIF2C
Gene Name :	KIF2C
Protein Name :	Kinesin-like protein KIF2C
Human Gene Id :	11004
Human Swiss Prot No :	Q99661
Mouse Gene Id :	73804
Mouse Swiss Prot No :	Q922S8
Immunogen :	The antiserum was produced against synthesized peptide derived from human KIF2C around the phosphorylation site of Ser95. AA range:61-110
Specificity :	Phospho-KIF2C (S95) Polyclonal Antibody detects endogenous levels of KIF2C protein only when phosphorylated at S95.
Formulation :	Liquid in PBS containing 50% glycerol, 0.5% BSA and 0.02% sodium azide.
Source :	Polyclonal, Rabbit,IgG
Dilution :	WB 1:500-2000;IHC 1:50-300
Purification :	The antibody was affinity-purified from rabbit antiserum by affinity-chromatography using epitope-specific immunogen.
Concentration :	1 mg/ml
Storage Stability :	-15°C to -25°C/1 year(Do not lower than -25°C)

Observed Band : 80kD

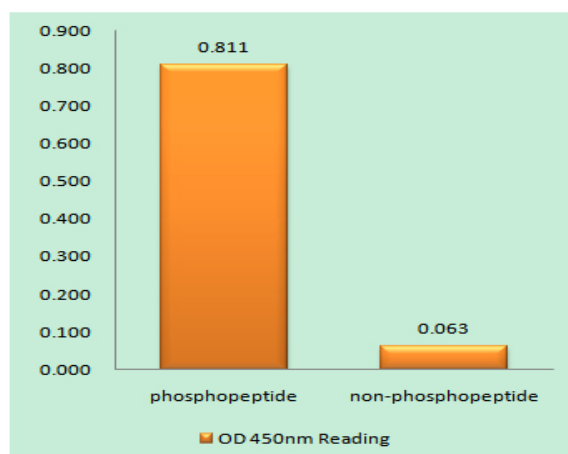
Background : kinesin family member 2C(KIF2C) Homo sapiens This gene encodes a kinesin-like protein that functions as a microtubule-dependent molecular motor. The encoded protein can depolymerize microtubules at the plus end, thereby promoting mitotic chromosome segregation. Alternative splicing results in multiple transcript variants. [provided by RefSeq, Jul 2014],

Function : function:Present throughout the cell cycle, associates with centromeres at early prophase, and remains associated with the centromere until after telophase.,PTM:Phosphorylated upon DNA damage, probably by ATM or ATR.,similarity:Belongs to the kinesin-like protein family.,similarity:Belongs to the kinesin-like protein family. MCAK/KIF2 subfamily.,similarity:Contains 1 kinesin-motor domain.,subunit:Interacts with CENPH.,tissue specificity:Expressed at high levels in thymus and testis, at low levels in small intestine, the mucosal lining of colon, and placenta, and at very low levels in spleen and ovary; expression is not detected in prostate, peripheral blood Leukocytes, heart, brain, lung, liver, skeletal muscle, kidney or pancreas.,

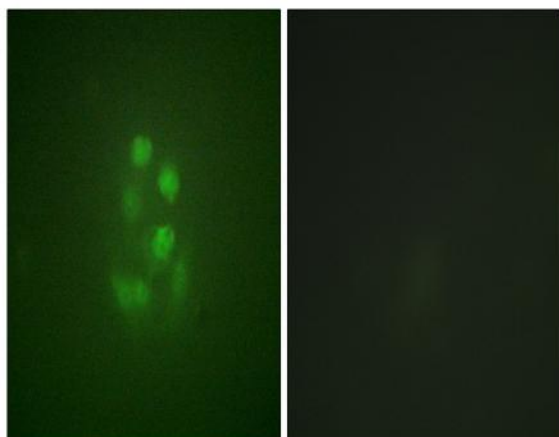
Subcellular Location : Cytoplasm, cytoskeleton . Nucleus . Chromosome, centromere . Chromosome, centromere, kinetochore . Associates with the microtubule network at the growing distal tip (the plus-end) of microtubules, probably through interaction with MTUS2/TIP150 and MAPRE1 (By similarity). Association with microtubule plus ends is also mediated by interaction with KIF18B. Centromeric localization requires the presence of BUB1 and SGO2. .

Expression : Expressed at high levels in thymus and testis, at low levels in small intestine, the mucosal lining of colon, and placenta, and at very low levels in spleen and ovary; expression is not detected in prostate, peripheral blood Leukocytes, heart, brain, lung, liver, skeletal muscle, kidney or pancreas. Isoform 2 is testis-specific.

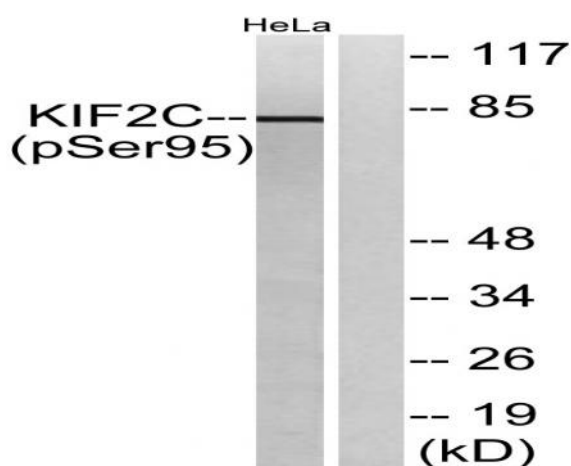
Products Images



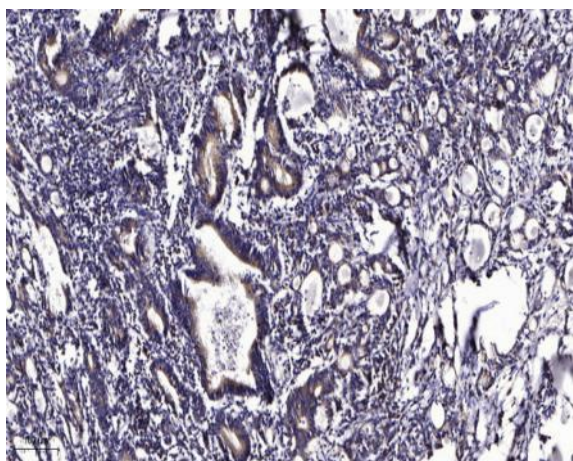
Enzyme-Linked Immunosorbent Assay (Phospho-ELISA) for Immunogen Phosphopeptide (Phospho-left) and Non-Phosphopeptide (Phospho-right), using KIF2C (Phospho-Ser95) Antibody



Immunofluorescence analysis of A549 cells, using KIF2C (Phospho-Ser95) Antibody. The picture on the right is blocked with the phospho peptide.



Western blot analysis of lysates from HeLa cells treated with TNF 10ng/ml 30', using KIF2C (Phospho-Ser95) Antibody. The lane on the right is blocked with the phospho peptide.



Immunohistochemical analysis of paraffin-embedded human Gastric adenocarcinoma. 1, Antibody was diluted at 1:200(4° overnight). 2, Tris-EDTA,pH9.0 was used for antigen retrieval. 3,Secondary antibody was diluted at 1:200(room temperature, 45min).