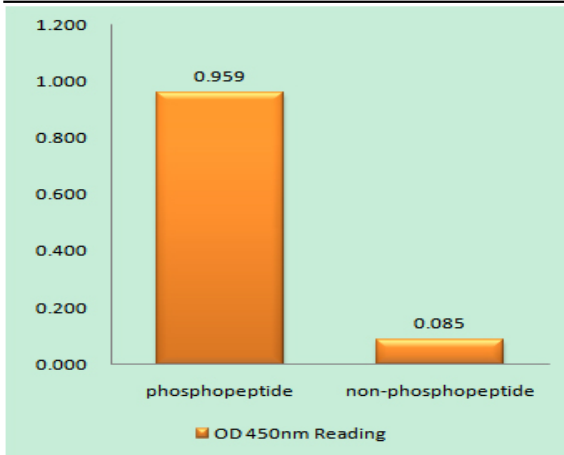


PKD1 (phospho Tyr463) Polyclonal Antibody

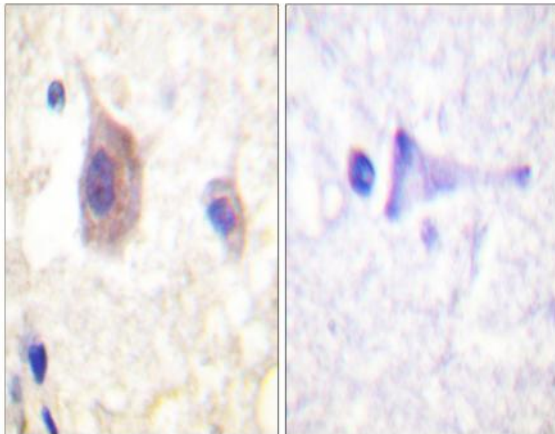
Catalog No :	YP0721
Reactivity :	Human;Mouse;Rat
Applications :	WB;IHC;IF;ELISA
Target :	PKD1
Fields :	>>Rap1 signaling pathway;>>Aldosterone synthesis and secretion;>>Chemical carcinogenesis - reactive oxygen species
Gene Name :	PRKD1
Protein Name :	Serine/threonine-protein kinase D1
Human Gene Id :	5587
Human Swiss Prot No :	Q15139
Mouse Gene Id :	18760
Mouse Swiss Prot No :	Q62101
Rat Gene Id :	85421
Rat Swiss Prot No :	Q9WTQ1
Immunogen :	The antiserum was produced against synthesized peptide derived from human PKD1/PKC mu around the phosphorylation site of Tyr463. AA range:429-478
Specificity :	Phospho-PKD1 (Y463) Polyclonal Antibody detects endogenous levels of PKD1 protein only when phosphorylated at Y463.
Formulation :	Liquid in PBS containing 50% glycerol, 0.5% BSA and 0.02% sodium azide.
Source :	Polyclonal, Rabbit,IgG
Dilution :	WB 1:500 - 1:2000. IHC 1:100 - 1:300. ELISA: 1:40000.. IF 1:50-200

Purification :	The antibody was affinity-purified from rabbit antiserum by affinity-chromatography using epitope-specific immunogen.
Concentration :	1 mg/ml
Storage Stability :	-15°C to -25°C/1 year(Do not lower than -25°C)
Observed Band :	130kD
Cell Pathway :	Regulation_Microtubule; Regulation of Actin Dynamics; Stem cell pathway; Insulin Receptor; B Cell Receptor; AMPK
Background :	PRKD1 is a serine/threonine kinase that regulates a variety of cellular functions, including membrane receptor signaling, transport at the Golgi, protection from oxidative stress at the mitochondria, gene transcription, and regulation of cell shape, motility, and adhesion (summary by Eiseler et al., 2009 [PubMed 19329994]).[supplied by OMIM, Nov 2010],
Function :	catalytic activity:ATP + a protein = ADP + a phosphoprotein.,enzyme regulation:Activated by diacylglycerol and phorbol esters.,function:Calcium-independent, phospholipid-dependent, serine- and threonine-specific kinase involved in resistance to oxidative stress.,PTM:Phosphorylation of Ser-738 and/or Ser-742 in activated PKD is mediated by transphosphorylation (By similarity). Phosphorylation of Tyr-463 mediated by the Src/Abl pathway in response to oxidative stress activates the kinase.,similarity:Belongs to the protein kinase superfamily.,similarity:Belongs to the protein kinase superfamily. CAMK Ser/Thr protein kinase family. PKD subfamily.,similarity:Contains 1 PH domain.,similarity:Contains 1 protein kinase domain.,similarity:Contains 2 phorbol-ester/DAG-type zinc fingers.,subunit:Interacts (via N-terminus) with ADAP1/CENTA1. Interacts with Src.,
Subcellular Location :	Cytoplasm . Cell membrane . Golgi apparatus, trans-Golgi network . Translocation to the cell membrane is required for kinase activation.
Expression :	Placenta,Testis,

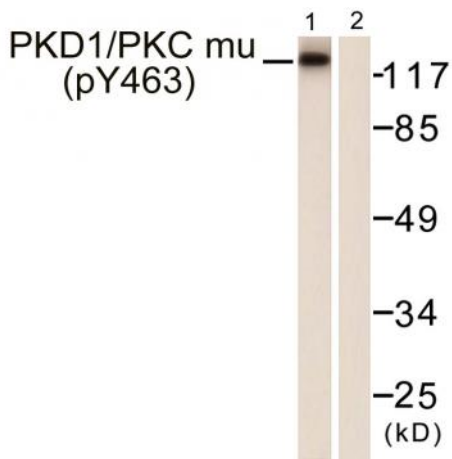
Products Images



Enzyme-Linked Immunosorbent Assay (Phospho-ELISA) for Immunogen Phosphopeptide (Phospho-left) and Non-Phosphopeptide (Phospho-right), using PKD1/PKC mu (Phospho-Tyr463) Antibody



Immunohistochemistry analysis of paraffin-embedded human brain, using PKD1/PKC mu (Phospho-Tyr463) Antibody. The picture on the right is blocked with the phosphopeptide.



Western blot analysis of lysates from HepG2 cells, using PKD1/PKC mu (Phospho-Tyr463) Antibody. The lane on the right is blocked with the phosphopeptide.