

MSK1 (phospho Ser376) Polyclonal Antibody

Catalog No :	YP0517
Reactivity :	Human;Mouse
Applications :	WB;IHC
Target :	MSK1
Fields :	>>MAPK signaling pathway;>>Adrenergic signaling in cardiomyocytes;>>TNF signaling pathway;>>Circadian entrainment;>>Neurotrophin signaling pathway;>>Shigellosis;>>Pathways in cancer;>>MicroRNAs in cancer;>>Bladder cancer
Gene Name :	RPS6KA5
Protein Name :	Ribosomal protein S6 kinase alpha-5
Human Gene Id :	9252
Human Swiss Prot No :	O75582
Mouse Gene Id :	73086
Mouse Swiss Prot No :	Q8C050
Immunogen :	The antiserum was produced against synthesized peptide derived from human MSK1 around the phosphorylation site of Ser376. AA range:343-392
Specificity :	Phospho-MSK1 (S376) Polyclonal Antibody detects endogenous levels of MSK1 protein only when phosphorylated at S376.
Formulation :	Liquid in PBS containing 50% glycerol, 0.5% BSA and 0.02% sodium azide.
Source :	Polyclonal, Rabbit,IgG
Dilution :	WB 1:500-2000;IHC 1:50-300
Purification :	The antibody was affinity-purified from rabbit antiserum by affinity-

chromatography using epitope-specific immunogen.

Concentration : 1 mg/ml

Storage Stability : -15°C to -25°C/1 year (Do not lower than -25°C)

Observed Band : 90kD

Cell Pathway : Insulin Receptor; Regulates Angiogenesis;
MAPK_ERK_Growth; MAPK_G_Protein; B Cell Receptor; AMPK

Background : catalytic activity: ATP + a protein = ADP + a phosphoprotein., cofactor: Magnesium., enzyme regulation: Appears to be activated by multiple phosphorylations on threonine and serine residues. ERK1/2 and MAPK14/p38-alpha may play a role in this process., function: Serine/threonine kinase required for the mitogen or stress-induced phosphorylation of the transcription factors CREB (cAMP response element-binding protein) and ATF1 (activating transcription factor-1). Essential role in the control of RELA transcriptional activity in response to TNF. Directly represses transcription via phosphorylation of 'Ser-1' of histone H2A. Phosphorylates 'Ser-10' of histone H3 in response to mitogenics, stress stimuli and epidermal growth-factor (EGF), which results in the transcriptional activation of several immediate early genes, including proto-oncogenes c-fos/FOS and c-jun/JUN. May also phosphorylate 'Ser-28' of histone H3. Mediates the mitogen- and stress-induced phosphorylation of high mobility group protein 14 (HMG-14)., miscellaneous: Enzyme activity requires the presence of both kinase domains., PTM: Ser-376 and Thr-581 phosphorylation is required for kinase activity. Ser-376 and Ser-212 are autophosphorylated by the C-terminal kinase domain, and their phosphorylation is essential for the catalytic activity of the N-terminal kinase domain., similarity: Belongs to the protein kinase superfamily. AGC Ser/Thr protein kinase family. S6 kinase subfamily., similarity: Contains 1 AGC-kinase C-terminal domain., similarity: Contains 2 protein kinase domains., subcellular location: Predominantly nuclear. Partially cytoplasmic., subunit: Forms a complex with either ERK1 or ERK2 in quiescent cells which transiently dissociates following mitogenic stimulation. Also associates with MAPK14/p38-alpha. Activated RPS6KA5 associates with and phosphorylates the NF-kappa-B p65 subunit RELA., tissue specificity: Widely expressed with high levels in heart, brain and placenta. Less abundant in lung, kidney and liver.,

Function : catalytic activity: ATP + a protein = ADP + a phosphoprotein., cofactor: Magnesium., enzyme regulation: Appears to be activated by multiple phosphorylations on threonine and serine residues. ERK1/2 and MAPK14/p38-alpha may play a role in this process., function: Serine/threonine kinase required for the mitogen or stress-induced phosphorylation of the transcription factors CREB (cAMP response element-binding protein) and ATF1 (activating transcription factor-1). Essential role in the control of RELA transcriptional activity in response to TNF. Directly represses transcription via phosphorylation of 'Ser-1' of histone H2A. Phosphorylates 'Ser-10' of histone H3

in response to mitogenics, stress stimuli and epidermal growth-factor (EGF), which results in the transcriptional activation of several immediate early genes, including proto-oncogenes c-fos/FOS and c-jun/JUN. May also phosphorylate 'Ser-28'

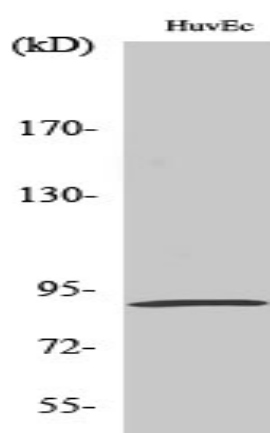
Subcellular Location :

Nucleus. Cytoplasm. Predominantly nuclear. Exported into cytoplasm in response to glucocorticoid.

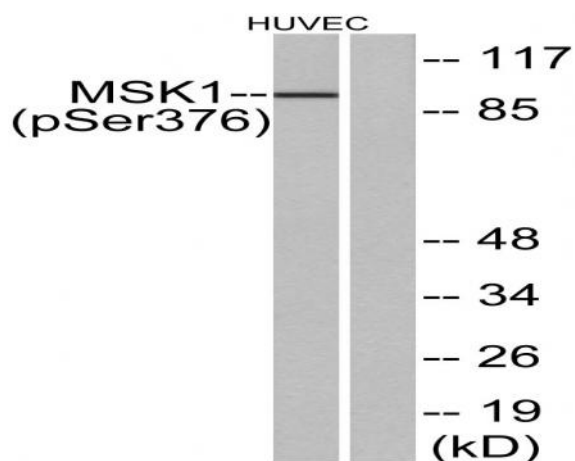
Expression :

Widely expressed with high levels in heart, brain and placenta. Less abundant in lung, kidney and liver.

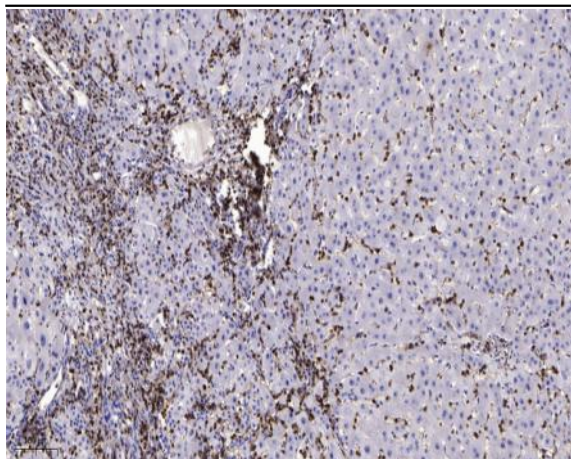
Products Images



Western blot analysis of various cells using Phospho-MSK1 (S376) Polyclonal Antibody diluted at 1:1000



Western blot analysis of lysates from HUVEC cells treated with PMA 125ng/ml 30', using MSK1 (Phospho-Ser376) Antibody. The lane on the right is blocked with the phospho peptide.



Immunohistochemical analysis of paraffin-embedded human liver cancer. 1, Antibody was diluted at 1:200(4° overnight). 2, Tris-EDTA,pH9.0 was used for antigen retrieval. 3,Secondary antibody was diluted at 1:200(room temperature, 45min).