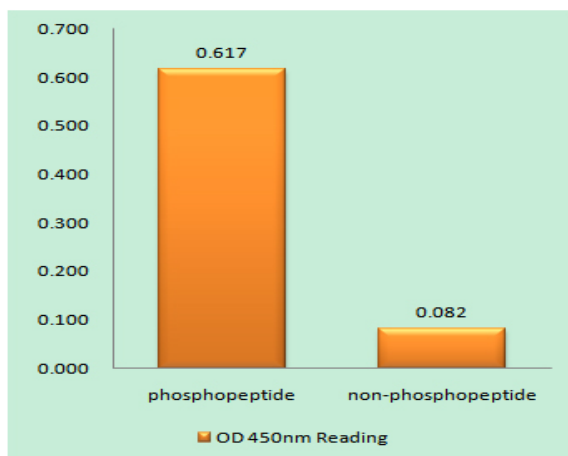


## Thymidine Kinase (phospho Ser13) Polyclonal Antibody

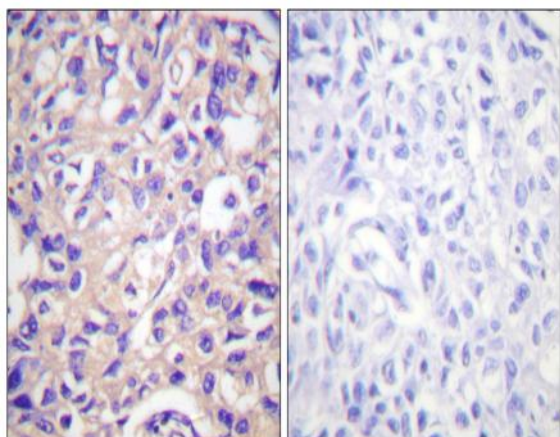
<b>Catalog No :</b>	YP0674
<b>Reactivity :</b>	Human;Mouse;Rat;Pig(Test by out customer)
<b>Applications :</b>	WB;IHC;IF;ELISA
<b>Target :</b>	Thymidine Kinase
<b>Fields :</b>	>>Pyrimidine metabolism;>>Drug metabolism - other enzymes;>>Metabolic pathways;>>Nucleotide metabolism
<b>Gene Name :</b>	TK1
<b>Protein Name :</b>	Thymidine kinase cytosolic
<b>Human Gene Id :</b>	7083
<b>Human Swiss Prot No :</b>	P04183
<b>Mouse Gene Id :</b>	21877
<b>Mouse Swiss Prot No :</b>	P04184
<b>Rat Gene Id :</b>	24834
<b>Rat Swiss Prot No :</b>	P27158
<b>Immunogen :</b>	The antiserum was produced against synthesized peptide derived from human TK around the phosphorylation site of Ser13. AA range:1-50
<b>Specificity :</b>	Phospho-Thymidine Kinase (S13) Polyclonal Antibody detects endogenous levels of Thymidine Kinase protein only when phosphorylated at S13.
<b>Formulation :</b>	Liquid in PBS containing 50% glycerol, 0.5% BSA and 0.02% sodium azide.
<b>Source :</b>	Polyclonal, Rabbit,IgG
<b>Dilution :</b>	WB 1:500 - 1:2000. IHC 1:100 - 1:300. ELISA: 1:5000.. IF 1:50-200

<b>Purification :</b>	The antibody was affinity-purified from rabbit antiserum by affinity-chromatography using epitope-specific immunogen.
<b>Concentration :</b>	1 mg/ml
<b>Storage Stability :</b>	-15°C to -25°C/1 year(Do not lower than -25°C)
<b>Observed Band :</b>	25kD
<b>Cell Pathway :</b>	Pyrimidine metabolism;Drug metabolism;
<b>Background :</b>	catalytic activity:ATP + thymidine = ADP + thymidine 5'-phosphate.,miscellaneous:Two forms have been identified in animal cells, one in cytosol and one in mitochondria. Activity of the cytosolic enzyme is high in proliferating cells and peaks during the S-phase of the cell cycle; it is very low in resting cells.,PTM:Phosphorylated on Ser-13 in mitosis.,similarity:Belongs to the thymidine kinase family.,
<b>Function :</b>	catalytic activity:ATP + thymidine = ADP + thymidine 5'-phosphate.,miscellaneous:Two forms have been identified in animal cells, one in cytosol and one in mitochondria. Activity of the cytosolic enzyme is high in proliferating cells and peaks during the S-phase of the cell cycle; it is very low in resting cells.,PTM:Phosphorylated on Ser-13 in mitosis.,similarity:Belongs to the thymidine kinase family.,
<b>Subcellular Location :</b>	Cytoplasm.
<b>Expression :</b>	Epithelium,Lymph,Skin,Uterus,

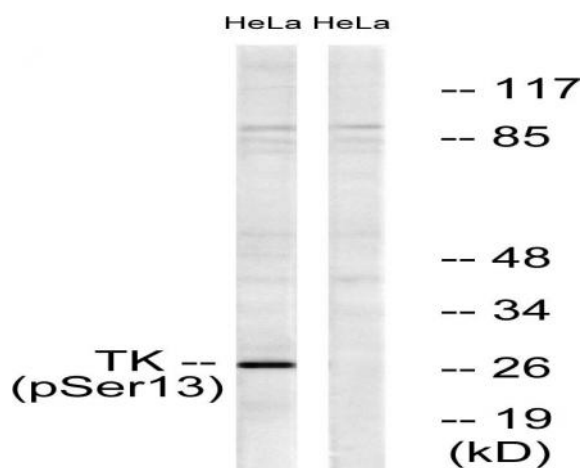
## Products Images



Enzyme-Linked Immunosorbent Assay (Phospho-ELISA) for Immunogen Phosphopeptide (Phospho-left) and Non-Phosphopeptide (Phospho-right), using TK (Phospho-Ser13) Antibody



Immunohistochemistry analysis of paraffin-embedded human breast carcinoma, using TK (Phospho-Ser13) Antibody. The picture on the right is blocked with the phospho peptide.



Western blot analysis of lysates from HeLa cells treated with paclitaxel 1uM 24h, using TK (Phospho-Ser13) Antibody. The lane on the right is blocked with the phospho peptide.