

RGS16 (phospho Tyr168) Polyclonal Antibody

Catalog No :	YP0397
Reactivity :	Human;Mouse;Rat;Monkey
Applications :	WB;ELISA;IHC
Target :	RGS16
Gene Name :	RGS16
Protein Name :	Regulator of G-protein signaling 16
Human Gene Id :	6004
Human Swiss Prot No :	O15492
Mouse Gene Id :	19734
Mouse Swiss Prot No :	P97428
Rat Swiss Prot No :	P56700
Immunogen :	The antiserum was produced against synthesized peptide derived from human RGS16 around the phosphorylation site of Tyr168. AA range:141-190
Specificity :	Phospho-RGS16 (Y168) Polyclonal Antibody detects endogenous levels of RGS16 protein only when phosphorylated at Y168.
Formulation :	Liquid in PBS containing 50% glycerol, 0.5% BSA and 0.02% sodium azide.
Source :	Polyclonal, Rabbit,IgG
Dilution :	WB 1:500-2000;IHC 1:50-300; ELISA 2000-20000
Purification :	The antibody was affinity-purified from rabbit antiserum by affinity-chromatography using epitope-specific immunogen.
Concentration :	1 mg/ml

Storage Stability : -15°C to -25°C/1 year(Do not lower than -25°C)

Observed Band : 30kD

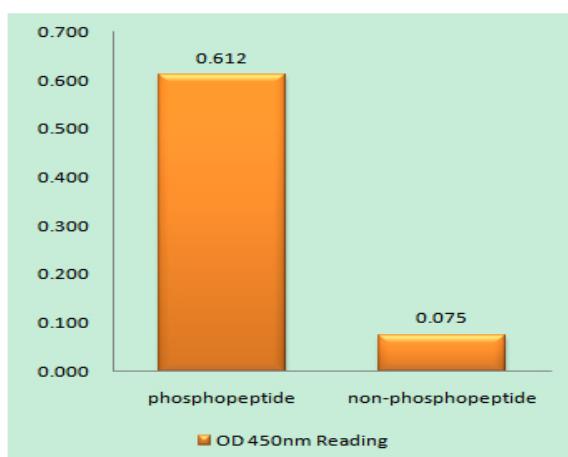
Background : The protein encoded by this gene belongs to the 'regulator of G protein signaling' family. It inhibits signal transduction by increasing the GTPase activity of G protein alpha subunits. It also may play a role in regulating the kinetics of signaling in the phototransduction cascade. [provided by RefSeq, Jul 2008],

Function : function:Inhibits signal transduction by increasing the GTPase activity of G protein alpha subunits thereby driving them into their inactive GDP-bound form. Binds to G(i)-alpha and G(o)-alpha, but not to G(s)-alpha. May play a role in regulating the kinetics of signaling in the phototransduction cascade.,PTM:Palmitoylated on Cys-2 and/or Cys-12.,PTM:Phosphorylation on Tyr-168 upon EGFR stimulation. Enhanced GTPase accelerating (GAP) activity on G(i)-alpha.,similarity:Contains 1 RGS domain.,tissue specificity:Abundantly expressed in retina with lower levels of expression in most other tissues.,

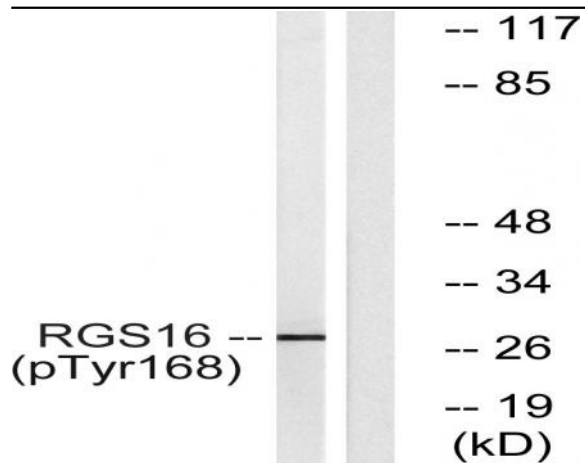
Subcellular Location : Membrane ; Lipid-anchor .

Expression : Abundantly expressed in retina with lower levels of expression in most other tissues.

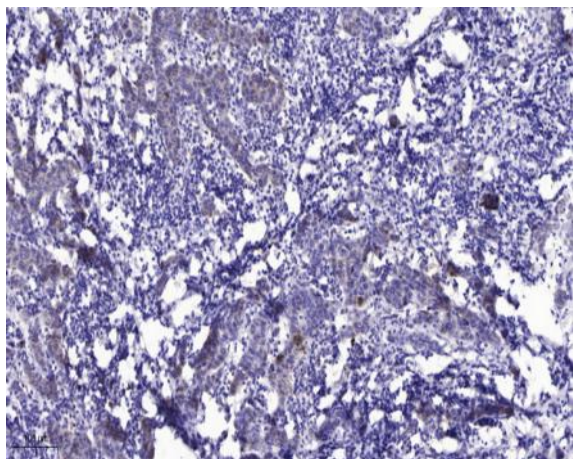
Products Images



Enzyme-Linked Immunosorbent Assay (Phospho-ELISA) for Immunogen Phosphopeptide (Phospho-left) and Non-Phosphopeptide (Phospho-right), using RGS16 (Phospho-Tyr168) Antibody



Western blot analysis of lysates from COS7 cells treated with heat shock, using RGS16 (Phospho-Tyr168) Antibody. The lane on the right is blocked with the phospho peptide.



Immunohistochemical analysis of paraffin-embedded human Breast cancer. 1, Antibody was diluted at 1:200(4° overnight). 2, Tris-EDTA,pH9.0 was used for antigen retrieval. 3,Secondary antibody was diluted at 1:200(room temperature, 45min).