

**CD50 (phospho Ser518) Polyclonal Antibody**

|                              |   |
|------------------------------|---|
| <b>Catalog No :</b>          | YP0350  |
| <b>Reactivity :</b>          | Human   |
| <b>Applications :</b>        | WB;ELISA  |
| <b>Target :</b>              | CD50/ICAM-3   |
| <b>Fields :</b>              | >>Cell adhesion molecules   |
| <b>Gene Name :</b>           | ICAM3   |
| <b>Protein Name :</b>        | Intercellular adhesion molecule 3   |
| <b>Human Gene Id :</b>       | 3385  |
| <b>Human Swiss Prot No :</b> | P32942  |
| <b>Immunogen :</b>           | The antiserum was produced against synthesized peptide derived from human CD50/ICAM-3 around the phosphorylation site of Ser518. AA range:484-533 |
| <b>Specificity :</b>         | Phospho-CD50 (S518) Polyclonal Antibody detects endogenous levels of CD50 protein only when phosphorylated at S518.                               |
| <b>Formulation :</b>         | Liquid in PBS containing 50% glycerol, 0.5% BSA and 0.02% sodium azide.   |
| <b>Source :</b>              | Polyclonal, Rabbit,IgG  |
| <b>Dilution :</b>            | WB 1:500 - 1:2000. ELISA: 1:40000. Not yet tested in other applications.  |
| <b>Purification :</b>        | The antibody was affinity-purified from rabbit antiserum by affinity-chromatography using epitope-specific immunogen.                             |
| <b>Concentration :</b>       | 1 mg/ml   |
| <b>Storage Stability :</b>   | -15°C to -25°C/1 year(Do not lower than -25°C)  |
| <b>Observed Band :</b>       | 42-60kD   |

**Cell Pathway :** Cell adhesion molecules (CAMs);

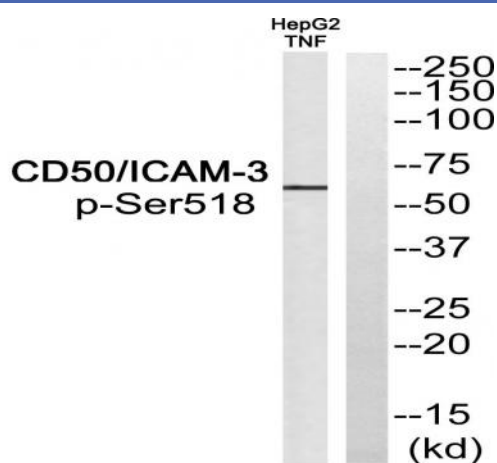
**Background :** The protein encoded by this gene is a member of the intercellular adhesion molecule (ICAM) family. All ICAM proteins are type I transmembrane glycoproteins, contain 2-9 immunoglobulin-like C2-type domains, and bind to the leukocyte adhesion LFA-1 protein. This protein is constitutively and abundantly expressed by all leucocytes and may be the most important ligand for LFA-1 in the initiation of the immune response. It functions not only as an adhesion molecule, but also as a potent signalling molecule. Alternative splicing results in multiple transcript variants encoding different isoforms. [provided by RefSeq, Feb 2016],

**Function :** function:ICAM proteins are ligands for the leukocyte adhesion protein LFA-1 (integrin alpha-L/beta-2). ICAM3 is also a ligand for integrin alpha-D/beta-2.,online information:ICAM-3,PTM:N-glycosylated; glycans consist of a mixture of tri- and tetra-antennary complex-type chains and high-mannose chains.,PTM:Upon stimulation by a physiologic stimuli becomes rapidly and transiently phosphorylated on serine residues.,similarity:Belongs to the immunoglobulin superfamily. ICAM family.,similarity:Contains 5 Ig-like C2-type (immunoglobulin-like) domains.,

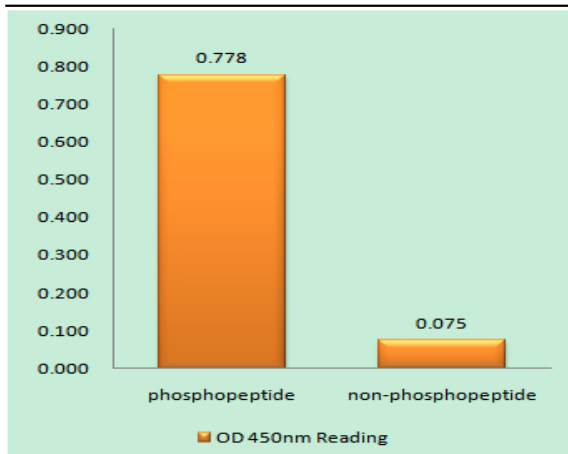
**Subcellular Location :** Membrane; Single-pass type I membrane protein.

**Expression :** Leukocytes.

## Products Images



Western blot analysis of CD50/ICAM-3 (Phospho-Ser518) Antibody. The lane on the right is blocked with the CD50/ICAM-3 (Phospho-Ser518) peptide.



Enzyme-Linked Immunosorbent Assay (Phospho-ELISA) for Immunogen Phosphopeptide (Phospho-left) and Non-Phosphopeptide (Phospho-right), using CD50/ICAM-3 (Phospho-Ser518) Antibody