

**Chromogranin A (PT0092R) PT® Rabbit mAb**

<b>Catalog No :</b>	YM8054
<b>Reactivity :</b>	Human; Mouse; Rat;
<b>Applications :</b>	WB;IHC;IF;IP;ELISA
<b>Protein Name :</b>	CHGA
<b>Sequence :</b>	beta Granin;betagranin (N-terminal fragment of chromogranin A);catestatin;CgA;CHG A;Chga;chromofungin;Chromogranin A;Chromogranin A parathyroid secretory protein 1;Chromogranin A precursor;ChromograninA;CMG A_HUMAN;ER-37;Pancreastatin;Parastatin;Parathyroid secretory protein 1;Pituitary secretory protein I;Secretory protein I;SP I;SP-I;SP1;SPI;vasostatin 2;Vasostatin;Vasostatin I;Vasostatin II;vasostatin-2
<b>Human Gene Id :</b>	1113
<b>Human Swiss Prot No :</b>	P10645
<b>Mouse Swiss Prot No :</b>	P26339
<b>Rat Swiss Prot No :</b>	P10354
<b>Specificity :</b>	endogenous
<b>Formulation :</b>	PBS, 50% glycerol, 0.05% Proclin 300, 0.05%BSA
<b>Source :</b>	Monoclonal, rabbit, IgG, Kappa
<b>Dilution :</b>	IHC 1:200-1:1000,WB 1:1000-1:5000,IF 1:200-1:1000,ELISA 1:5000-1:20000,IP 1:50-1:200,
<b>Purification :</b>	Protein A
<b>Storage Stability :</b>	-15°C to -25°C/1 year(Do not lower than -25°C)
<b>Molecularweight :</b>	51kD

---

**Observed Band :** 80kD

---

**Background :** The protein encoded by this gene is a member of the chromogranin/secretogranin family of neuroendocrine secretory proteins. It is found in secretory vesicles of neurons and endocrine cells. This gene product is a precursor to three biologically active peptides; vasostatin, pancreastatin, and parastatin. These peptides act as autocrine or paracrine negative modulators of the neuroendocrine system. Two other peptides, catestatin and chromofungin, have antimicrobial activity and antifungal activity, respectively. Two transcript variants encoding different isoforms have been found for this gene. [provided by RefSeq, Sep 2014],

---

**Function :** function:Pancreastatin strongly inhibits glucose induced insulin release from the pancreas.,miscellaneous:Binds calcium with a low-affinity.,PTM:Sulfated on tyrosine residues and/or contains sulfated glycans.,similarity:Belongs to the chromogranin/secretogranin protein family.,subcellular location:Neuroendocrine and endocrine secretory granules.,

---

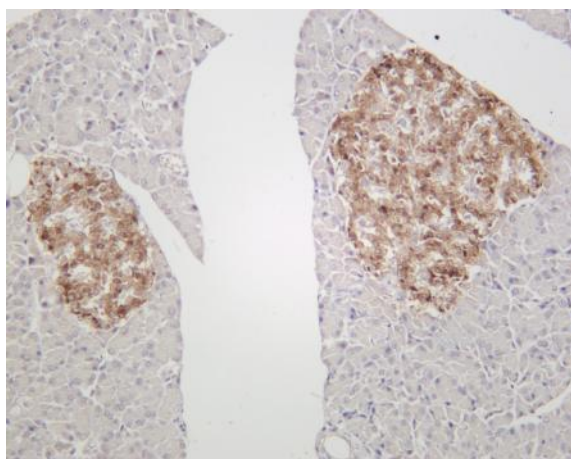
**Subcellular Location :** Secreted

---

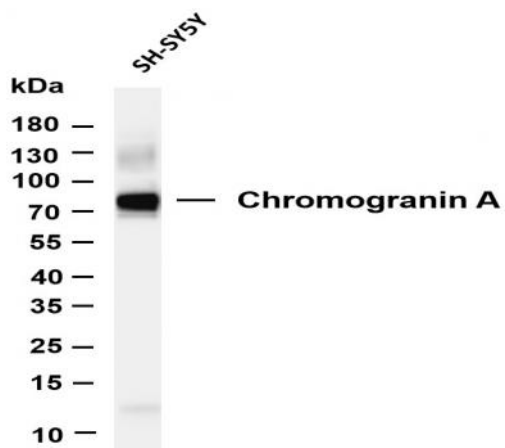
**Expression :** Pancreas/ stomach

---

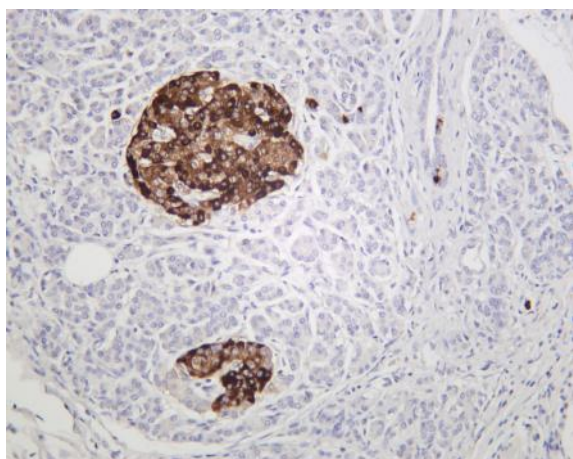
## Products Images



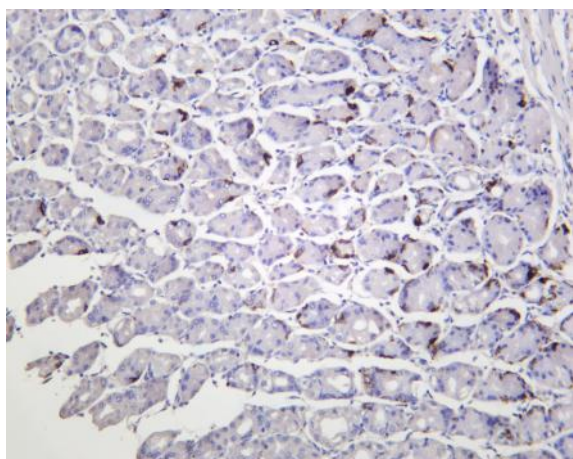
Rat pancreas was stained with anti-Chromogranin A (PT0092R) rabbit antibody



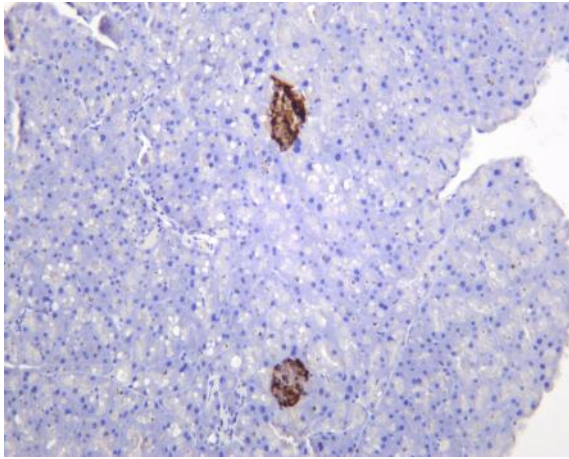
Various whole cell lysates were separated by 4-20% SDS-PAGE, and the membrane was blotted with anti-Chromogranin A (PT0092R) antibody. The HRP-conjugated Goat anti-Rabbit IgG(H + L) antibody was used to detect the antibody. Lane 1: SH-SY5Y Predicted band size: 51kDa Observed band size: 80kDa



Human pancreas was stained with anti-Chromogranin A (PT0092R) rabbit antibody



Human stomach was stained with anti-Chromogranin A (PT0092R) rabbit antibody



Mouse pancreas was stained with anti-Chromogranin A (PT0092R) rabbit antibody