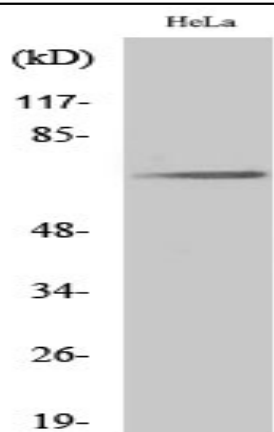


**Paxillin (phospho Tyr31) Polyclonal Antibody**

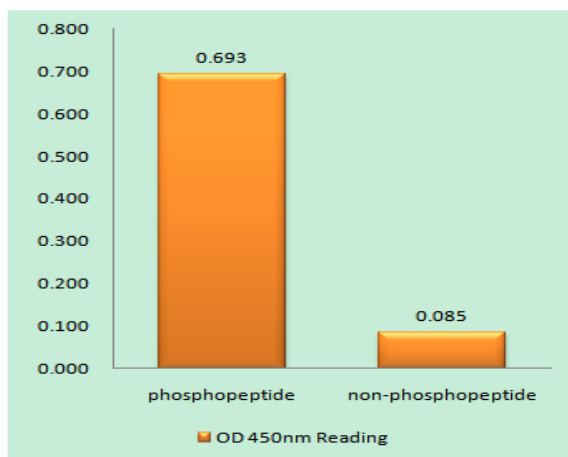
<b>Catalog No :</b>	YP0220
<b>Reactivity :</b>	Human;Mouse;Rat
<b>Applications :</b>	WB;IHC;IF;ELISA
<b>Target :</b>	Paxillin
<b>Fields :</b>	>>Chemokine signaling pathway;>>VEGF signaling pathway;>>Focal adhesion;>>Leukocyte transendothelial migration;>>Regulation of actin cytoskeleton;>>Bacterial invasion of epithelial cells;>>Shigellosis;>>Yersinia infection;>>Human cytomegalovirus infection;>>Human papillomavirus infection;>>Human immunodeficiency virus 1 infection;>>Viral carcinogenesis;>>Proteoglycans in cancer
<b>Gene Name :</b>	PXN
<b>Protein Name :</b>	Paxillin
<b>Human Gene Id :</b>	5829
<b>Human Swiss Prot No :</b>	P49023
<b>Mouse Gene Id :</b>	19303
<b>Mouse Swiss Prot No :</b>	Q8VI36
<b>Rat Gene Id :</b>	360820
<b>Rat Swiss Prot No :</b>	Q66H76
<b>Immunogen :</b>	The antiserum was produced against synthesized peptide derived from human Paxillin around the phosphorylation site of Tyr31. AA range:15-64
<b>Specificity :</b>	Phospho-Paxillin (Y31) Polyclonal Antibody detects endogenous levels of Paxillin protein only when phosphorylated at Y31.
<b>Formulation :</b>	Liquid in PBS containing 50% glycerol, 0.5% BSA and 0.02% sodium azide.

<b>Source :</b>	Polyclonal, Rabbit,IgG
<b>Dilution :</b>	WB 1:500 - 1:2000. IHC 1:100 - 1:300. ELISA: 1:20000.. IF 1:50-200
<b>Purification :</b>	The antibody was affinity-purified from rabbit antiserum by affinity-chromatography using epitope-specific immunogen.
<b>Concentration :</b>	1 mg/ml
<b>Storage Stability :</b>	-15°C to -25°C/1 year(Do not lower than -25°C)
<b>Observed Band :</b>	68kD
<b>Cell Pathway :</b>	Chemokine;VEGF;Focal adhesion;Leukocyte transendothelial migration;Regulates Actin and Cytoskeleton;
<b>Background :</b>	This gene encodes a cytoskeletal protein involved in actin-membrane attachment at sites of cell adhesion to the extracellular matrix (focal adhesion). Alternatively spliced transcript variants encoding different isoforms have been described for this gene. These isoforms exhibit different expression pattern, and have different biochemical, as well as physiological properties (PMID:9054445). [provided by RefSeq, Aug 2011],
<b>Function :</b>	function:Cytoskeletal protein involved in actin-membrane attachment at sites of cell adhesion to the extracellular matrix (focal adhesion).,PTM:Phosphorylated on tyrosine residues during integrin-mediated cell adhesion, embryonic development, fibroblast transformation and following stimulation of cells by mitogens.,similarity:Belongs to the paxillin family.,similarity:Contains 3 LIM zinc-binding domains.,similarity:Contains 4 LIM zinc-binding domains.,subunit:Binds in vitro to vinculin as well as to the SH3 domain of c-SRC and, when tyrosine phosphorylated, to the SH2 domain of V-CRK. Isoform beta binds to focal adhesion kinase but weakly to vinculin. Isoform gamma binds to vinculin but only weakly to focal adhesion kinase. Interacts with GIT1, NUDT16L1/SDOS, PARVA and TGFB111. Component of cytoplasmic complexes, which also contain GIT1, ARHGEF6 and PAK1 (By similarity). Binds ASAP2. Int
<b>Subcellular Location :</b>	Cytoplasm, cytoskeleton . Cell junction, focal adhesion . Cytoplasm, cell cortex . Colocalizes with integrins at the cell periphery. Colocalize with PXN to membrane ruffles and the leading edge of migrating cells (PubMed:23128389). .
<b>Expression :</b>	Brain,Epithelium,Lung,Placenta,T-cell,Uterus,

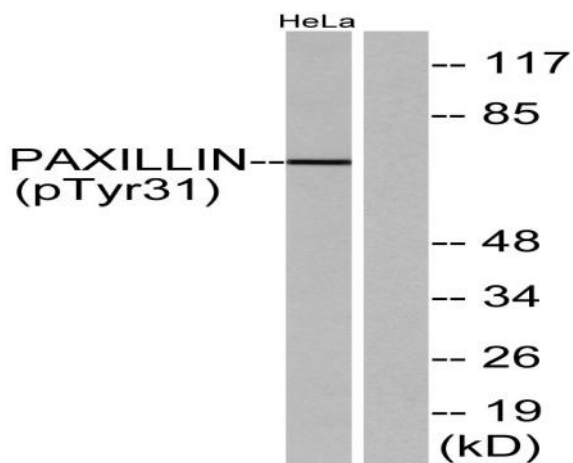
## Products Images



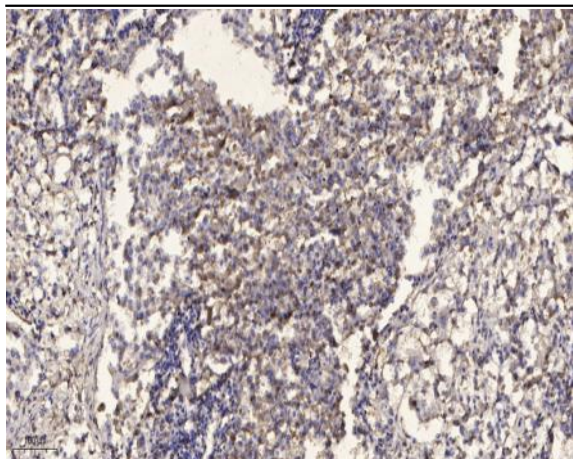
Western Blot analysis of various cells using Phospho-Paxillin (Y31) Polyclonal Antibody diluted at 1:1000



Enzyme-Linked Immunosorbent Assay (Phospho-ELISA) for Immunogen Phosphopeptide (Phospho-left) and Non-Phosphopeptide (Phospho-right), using Paxillin (Phospho-Tyr31) Antibody



Western blot analysis of lysates from HeLa cells treated with TNF 200ng/ml 2', using Paxillin (Phospho-Tyr31) Antibody. The lane on the right is blocked with the phospho peptide.



Immunohistochemical analysis of paraffin-embedded human Squamous cell carcinoma of lung. 1, Antibody was diluted at 1:200(4° overnight). 2, Tris-EDTA,pH9.0 was used for antigen retrieval. 3,Secondary antibody was diluted at 1:200(room temperature, 45min).