

C3G (phospho Tyr504) Polyclonal Antibody

Catalog No :	YP0377
Reactivity :	Human;Rat;Mouse;
Applications :	WB;IHC;IF;ELISA
Target :	C3G
Fields :	>>Rap1 signaling pathway;>>Focal adhesion;>>Neurotrophin signaling pathway;>>Insulin signaling pathway;>>Renal cell carcinoma
Gene Name :	RAPGEF1
Protein Name :	Rap guanine nucleotide exchange factor 1
Human Gene Id :	2889
Human Swiss Prot No :	Q13905
Immunogen :	The antiserum was produced against synthesized peptide derived from human RapGEF1 around the phosphorylation site of Tyr504. AA range:470-519
Specificity :	Phospho-C3G (Y504) Polyclonal Antibody detects endogenous levels of C3G protein only when phosphorylated at Y504.
Formulation :	Liquid in PBS containing 50% glycerol, 0.5% BSA and 0.02% sodium azide.
Source :	Polyclonal, Rabbit,IgG
Dilution :	WB 1:500 - 1:2000. ELISA: 1:10000.. IF 1:50-200
Purification :	The antibody was affinity-purified from rabbit antiserum by affinity-chromatography using epitope-specific immunogen.
Concentration :	1 mg/ml
Storage Stability :	-15°C to -25°C/1 year(Do not lower than -25°C)

Observed Band : 120kD

Cell Pathway : Regulation of Actin Dynamics; AMPK

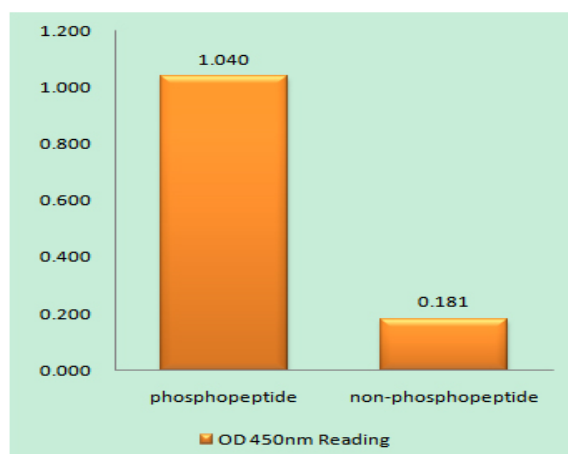
Background : This gene encodes a human guanine nucleotide exchange factor. It transduces signals from CRK by binding the SH3 domain of CRK, and activating several members of the Ras family of GTPases. This signaling cascade that may be involved in apoptosis, integrin-mediated signal transduction, and cell transformation. Several alternatively spliced transcript variants of this gene have been described, but the full-length nature of some variants has not been determined. [provided by RefSeq, Jul 2008],

Function : function:Guanine nucleotide-releasing protein that binds to SH3 domain of CRK and GRB2/ASH. Transduces signals from CRK to activate RAS.,similarity:Contains 1 N-terminal Ras-GEF domain.,similarity:Contains 1 Ras-GEF domain.,subunit:Interacts with CRK via its SH3-binding sites.,tissue specificity:Ubiquitously expressed in adult and fetus. Expression is high in adult skeletal muscle and placenta and in fetal brain and heart. Low levels of expression in adult and fetal liver.,

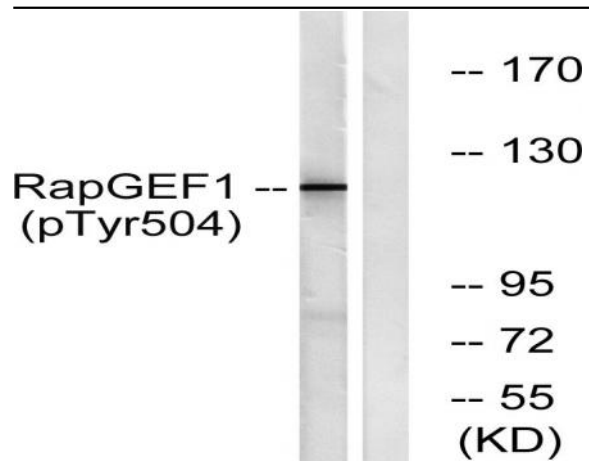
Subcellular Location : Early endosome .

Expression : Ubiquitously expressed in adult and fetus. Expression is high in adult skeletal muscle and placenta and in fetal brain and heart. Low levels of expression in adult and fetal liver.

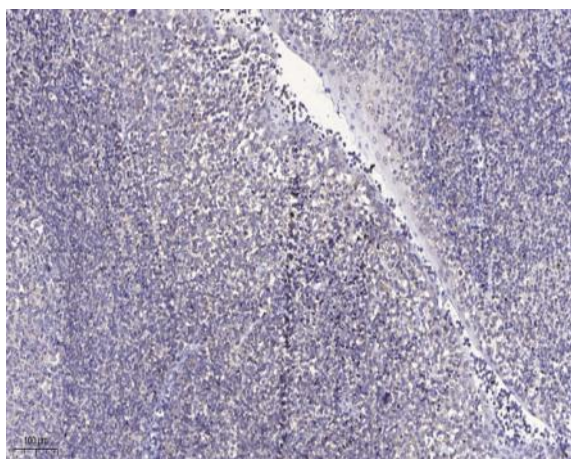
Products Images



Enzyme-Linked Immunosorbent Assay (Phospho-ELISA) for Immunogen Phosphopeptide (Phospho-left) and Non-Phosphopeptide (Phospho-right), using RapGEF1 (Phospho-Tyr504) Antibody



Western blot analysis of lysates from HepG2 cells treated with Na_3VO_4 0.3nM 40', using RapGEF1 (Phospho-Tyr504) Antibody. The lane on the right is blocked with the phospho peptide.



Immunohistochemical analysis of paraffin-embedded human tonsil. 1, Antibody was diluted at 1:200(4° overnight). 2, Tris-EDTA,pH9.0 was used for antigen retrieval. 3,Secondary antibody was diluted at 1:200(room temperature, 30min).