

**MEK-6 (phospho Ser207) Polyclonal Antibody**

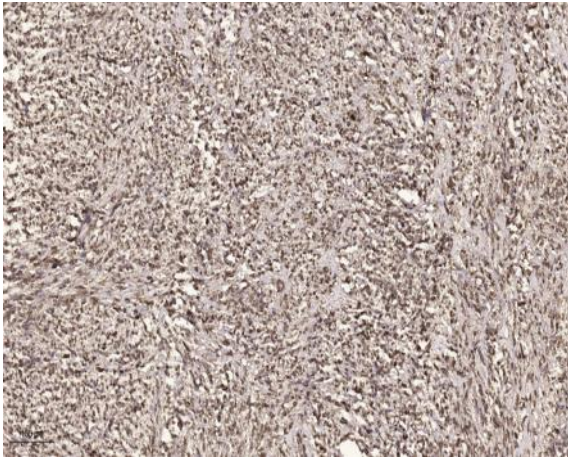
|                              |  |
|------------------------------|--|
| <b>Catalog No :</b>          | YP0173   |
| <b>Reactivity :</b>          | Human;Mouse;Rat  |
| <b>Applications :</b>        | WB;IHC;IF;ELISA  |
| <b>Target :</b>              | MEK-6  |
| <b>Fields :</b>              | >>MAPK signaling pathway;>>Rap1 signaling pathway;>>Cellular senescence;>>Osteoclast differentiation;>>Toll-like receptor signaling pathway;>>Fc epsilon RI signaling pathway;>>TNF signaling pathway;>>Inflammatory mediator regulation of TRP channels;>>GnRH signaling pathway;>>Growth hormone synthesis, secretion and action;>>Alcoholic liver disease;>>Amyotrophic lateral sclerosis;>>Pathways of neurodegeneration - multiple diseases;>>Salmonella infection;>>Yersinia infection;>>Toxoplasmosis;>>Hepatitis B;>>Human cytomegalovirus infection;>>Kaposi sarcoma-associated herpesvirus infection;>>Epstein-Barr virus infection;>>Human immunodeficiency virus 1 infection;>>PD-L1 expression and PD-1 checkpoint pathway in cancer;>>Lipid and atherosclerosis;>>Fluid shear stress and atherosclerosis |
| <b>Gene Name :</b>           | MAP2K6   |
| <b>Protein Name :</b>        | Dual specificity mitogen-activated protein kinase kinase 6   |
| <b>Human Gene Id :</b>       | 5608   |
| <b>Human Swiss Prot No :</b> | P52564   |
| <b>Mouse Gene Id :</b>       | 26399  |
| <b>Mouse Swiss Prot No :</b> | P70236   |
| <b>Immunogen :</b>           | Synthesized phospho-peptide around the phosphorylation site of human MEK-6 (phospho Ser207)  |
| <b>Specificity :</b>         | Phospho-MEK-6 (S207) Polyclonal Antibody detects endogenous levels of MEK-6 protein only when phosphorylated at S207.  |

---

|                               |  |
|-------------------------------|--|
| <b>Formulation :</b>          | Liquid in PBS containing 50% glycerol, 0.5% BSA and 0.02% sodium azide.  |
| <b>Source :</b>               | Polyclonal, Rabbit,IgG   |
| <b>Dilution :</b>             | WB 1:500 - 1:2000. IHC 1:100 - 1:300. ELISA: 1:40000.. IF 1:50-200   |
| <b>Purification :</b>         | The antibody was affinity-purified from rabbit antiserum by affinity-chromatography using epitope-specific immunogen.  |
| <b>Concentration :</b>        | 1 mg/ml  |
| <b>Storage Stability :</b>    | -15°C to -25°C/1 year(Do not lower than -25°C)   |
| <b>Molecularweight :</b>      | 37kD   |
| <b>Cell Pathway :</b>         | Regulates Angiogenesis; Stem cell pathway; Regulation of Actin Dynamics; Toll_Like; Cell Growth; MAPK_ERK_Growth;MAPK_G_Protein; B Cell Receptor   |
| <b>Background :</b>           | This gene encodes a member of the dual specificity protein kinase family, which functions as a mitogen-activated protein (MAP) kinase kinase. MAP kinases, also known as extracellular signal-regulated kinases (ERKs), act as an integration point for multiple biochemical signals. This protein phosphorylates and activates p38 MAP kinase in response to inflammatory cytokines or environmental stress. As an essential component of p38 MAP kinase mediated signal transduction pathway, this gene is involved in many cellular processes such as stress induced cell cycle arrest, transcription activation and apoptosis. [provided by RefSeq, Jul 2008],   |
| <b>Function :</b>             | catalytic activity:ATP + a protein = ADP + a phosphoprotein.,enzyme regulation:Probably activated by dual phosphorylation on Ser-207 and Thr-211.,function:Catalyzes the concomitant phosphorylation of a threonine and a tyrosine residue in MAP kinase p38 exclusively.,induction:Strongly activated by UV, anisomycin, and osmotic shock but not by phorbol esters, NGF or EGF.,PTM:Acetylation of Ser-207 and Thr-211 by Yersinia yopJ prevents phosphorylation and activation, thus blocking the MAPK signaling pathway.,PTM:Weakly autophosphorylated.,similarity:Belongs to the protein kinase superfamily.,similarity:Belongs to the protein kinase superfamily. STE Ser/Thr protein kinase family. MAP kinase kinase subfamily.,similarity:Contains 1 protein kinase domain.,subunit:Interacts with Yersinia yopJ.,tissue specificity:Isoform 2 is only expressed in skeletal muscle. Isoform 1, on the other hand, is four |
| <b>Subcellular Location :</b> | Nucleus . Cytoplasm . Cytoplasm, cytoskeleton . Binds to microtubules.   |
| <b>Expression :</b>           | Isoform 2 is only expressed in skeletal muscle. Isoform 1 is expressed in skeletal muscle, heart, and in lesser extent in liver or pancreas.   |

---

## Products Images



Immunohistochemical analysis of paraffin-embedded human small intestinal carcinoma tissue. 1,primary Antibody was diluted at 1:200(4 ° overnight). 2, Sodium citrate pH 6.0 was used for antigen retrieval(>98 °C,20min). 3,Secondary antibody was diluted at 1:200