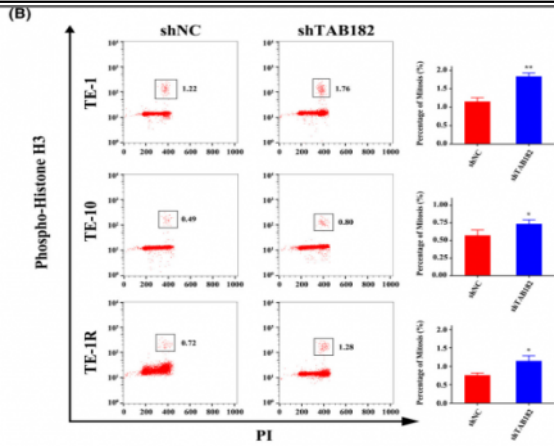


Histone H3 (phospho Ser10) Polyclonal Antibody

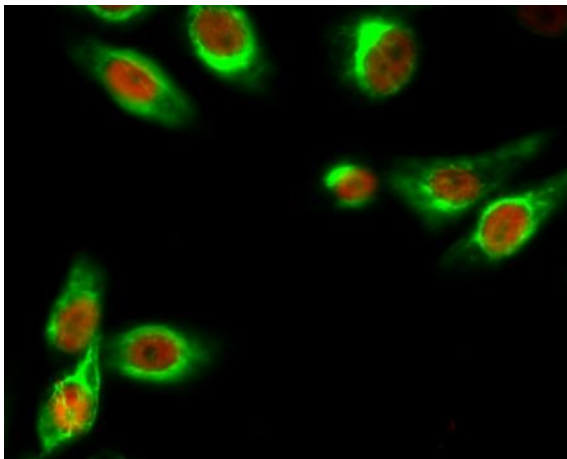
| | |
|------------------------------|--|
| Catalog No : | YP0129 |
| Reactivity : | Human;Mouse;Rat;Drosophila melanogaster |
| Applications : | WB;IHC;IHC-f;Flow Cyt;ICC;IF;ELISA |
| Target : | Histone H3 |
| Fields : | >>Neutrophil extracellular trap formation;>>Alcoholism;>>Shigellosis;>>Transcriptional misregulation in cancer;>>Systemic lupus erythematosus |
| Gene Name : | HIST1H3A |
| Protein Name : | Histone H3.1 |
| Human Gene Id : | 8350/8351/8352/8353/8354/8355/8356/8357/8358/8968 |
| Human Swiss Prot No : | P68431/Q71DI3/P84243 |
| Mouse Gene Id : | 319152/15077/15078 |
| Rat Gene Id : | 291159/100361558 |
| Rat Swiss Prot No : | Q6LED0/P84245 |
| Immunogen : | The antiserum was produced against synthesized peptide derived from human Histone H3.1 around the phosphorylation site of Ser10. AA range:1-50 |
| Specificity : | Phospho-Histone H3 (S10) Polyclonal Antibody detects endogenous levels of Histone H3 protein only when phosphorylated at S10. |
| Formulation : | Liquid in PBS containing 50% glycerol, 0.5% BSA and 0.02% sodium azide. |
| Source : | Polyclonal, Rabbit,IgG |
| Dilution : | WB 1:500 - 1:2000. IHC 1:100 - 1:300. ICC:IF 1:200 - 1:1000. ELISA: 1:10000. IHC-f,Flow Cyt 1:500 |

| | |
|-------------------------------|---|
| Purification : | The antibody was affinity-purified from rabbit antiserum by affinity-chromatography using epitope-specific immunogen. |
| Concentration : | 1 mg/ml |
| Storage Stability : | -15°C to -25°C/1 year(Do not lower than -25°C) |
| Observed Band : | 15kD |
| Cell Pathway : | Protein_Acetylation |
| Background : | <p>Histones are basic nuclear proteins that are responsible for the nucleosome structure of the chromosomal fiber in eukaryotes. This structure consists of approximately 146 bp of DNA wrapped around a nucleosome, an octamer composed of pairs of each of the four core histones (H2A, H2B, H3, and H4). The chromatin fiber is further compacted through the interaction of a linker histone, H1, with the DNA between the nucleosomes to form higher order chromatin structures. This gene is intronless and encodes a replication-dependent histone that is a member of the histone H3 family. Transcripts from this gene lack polyA tails; instead, they contain a palindromic termination element. This gene is found in the large histone gene cluster on chromosome 6p22-p21.3. [provided by RefSeq, Aug 2015],</p> |
| Function : | <p>caution:Was originally (PubMed:2587222) thought to originate from mouse.,developmental stage:Expressed during S phase, then expression strongly decreases as cell division slows down during the process of differentiation.,function:Core component of nucleosome. Nucleosomes wrap and compact DNA into chromatin, limiting DNA accessibility to the cellular machineries which require DNA as a template. Histones thereby play a central role in transcription regulation, DNA repair, DNA replication and chromosomal stability. DNA accessibility is regulated via a complex set of post-translational modifications of histones, also called histone code, and nucleosome remodeling.,mass spectrometry:Monoisotopic with N-acetylserine PubMed:16457589,miscellaneous:This histone is only present in mammals and is enriched in acetylation of Lys-15 and dimethylation of Lys-10 (H3K9me2).,PTM:Acetylation is generally I</p> |
| Subcellular Location : | Nucleus. Chromosome. |
| Expression : | Blood,Epithelium,Kidney,Lung,Ovary,Spleen,Uterus, |

Products Images

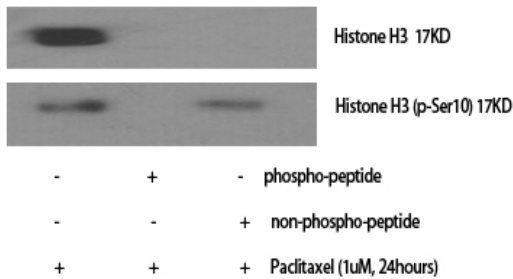


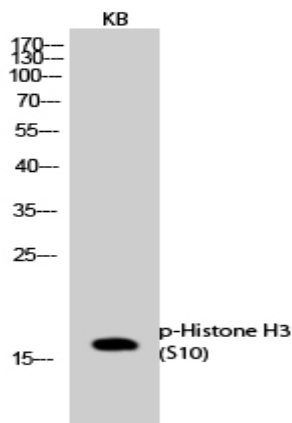
Cao, Yuandong, et al. "Elevated TAB182 enhances the radioresistance of esophageal squamous cell carcinoma through G2-M checkpoint modulation." *Cancer Medicine* 10.9 (2021): 3101-3112.



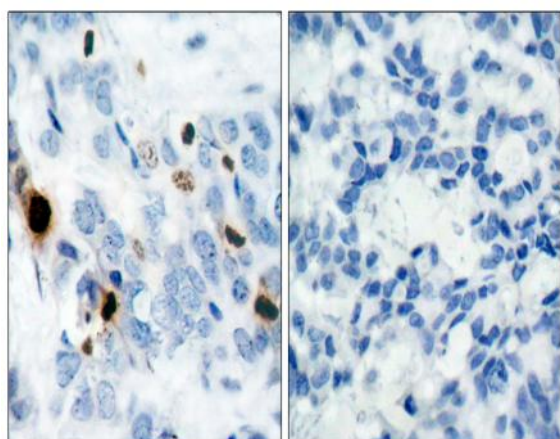
Immunofluorescence analysis of Hela cell. 1, Histone H3 (phospho Ser10) Polyclonal Antibody (red) was diluted at 1:200 (4° overnight). β -Tubulin Monoclonal Antibody (5G3) (green) was diluted at 1:200 (4° overnight). 2, Goat Anti Rabbit Alexa Fluor 594 Catalog: RS3611 was diluted at 1:1000 (room temperature, 50min). Goat Anti Mouse Alexa Fluor 488 Catalog: RS3208 was diluted at 1:1000 (room temperature, 50min).

Western Blot analysis of various cells using Phospho-Histone H3 (S10) Polyclonal Antibody cells nucleus extracted by Minute TM Cytoplasmic and Nuclear Fractionation kit (SC-003, Invent biotech, MN, USA).

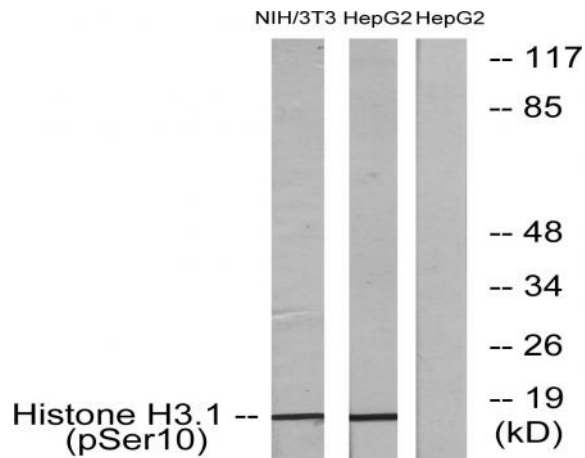




Western Blot analysis of KB cells using Phospho-Histone H3 (S10) Polyclonal Antibody cells nucleus extracted by Minute TM Cytoplasmic and Nuclear Fractionation kit (SC-003, Inventbiotech, MN, USA).



Immunohistochemistry analysis of paraffin-embedded human breast carcinoma, using Histone H3.1 (Phospho-Ser10) Antibody. The picture on the right is blocked with the phospho peptide.



Western blot analysis of lysates from NIH/3T3 cells and HepG2 cells, using Histone H3.1 (Phospho-Ser10) Antibody. The lane on the right is blocked with the phospho peptide.