

Erbin (phospho Tyr1104) Polyclonal Antibody

Catalog No :	YP0099
Reactivity :	Human;Rat;Mouse;
Applications :	WB;ELISA
Target :	Erbin
Fields :	>>NOD-like receptor signaling pathway
Gene Name :	ERBB2IP
Protein Name :	Protein LAP2
Human Gene Id :	55914
Human Swiss Prot No :	Q96RT1
Mouse Swiss Prot No :	Q80TH2
Immunogen :	Synthesized phospho-peptide around the phosphorylation site of human Erbin (phospho Tyr1104)
Specificity :	Phospho-Erbin (Y1104) Polyclonal Antibody detects endogenous levels of Erbin protein only when phosphorylated at Y1104.
Formulation :	Liquid in PBS containing 50% glycerol, 0.5% BSA and 0.02% sodium azide.
Source :	Polyclonal, Rabbit,IgG
Dilution :	WB 1:500 - 1:2000. ELISA: 1:10000. Not yet tested in other applications.
Purification :	The antibody was affinity-purified from rabbit antiserum by affinity-chromatography using epitope-specific immunogen.
Concentration :	1 mg/ml
Storage Stability :	-15°C to -25°C/1 year(Do not lower than -25°C)

Observed Band : 172kD

Cell Pathway : NOD-like receptor;

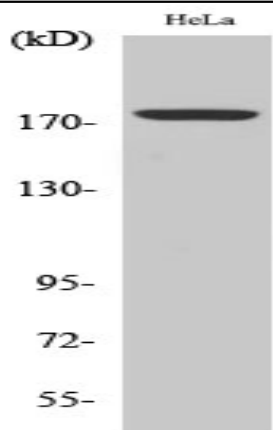
Background : This gene is a member of the leucine-rich repeat and PDZ domain (LAP) family. The encoded protein contains 17 leucine-rich repeats and one PDZ domain. It binds to the unphosphorylated form of the ERBB2 protein and regulates ERBB2 function and localization. It has also been shown to affect the Ras signaling pathway by disrupting Ras-Raf interaction. Alternatively spliced transcript variants encoding multiple isoforms have been observed for this gene. [provided by RefSeq, Nov 2011],

Function : function:Acts as an adapter for the receptor ERBB2, in epithelia. By binding the unphosphorylated 'Tyr-1248' of receptor ERBB2, it may contribute to stabilize this unphosphorylated state.,sequence caution:Contaminating sequence. Potential poly-A sequence.,similarity:Belongs to the LAP (LRR and PDZ) protein family.,similarity:Contains 1 PDZ (DHR) domain.,similarity:Contains 17 LRR (leucine-rich) repeats.,subcellular location:Found in hemidesmosomes, which are cell-substrate adhesion complexes in stratified epithelia. In transfected cells, either diffusely distributed over the cytoplasm or concentrated at the basolateral membrane.,subunit:Interacts with ERBB2, BPAG1 and ITGB4. May favor the localization of ERBB2, by restricting its presence to the basolateral membrane of epithelial cells. Also found to interact with ARVCF and delta catenin.,tissue specificity:Highly expressed in brain, hea

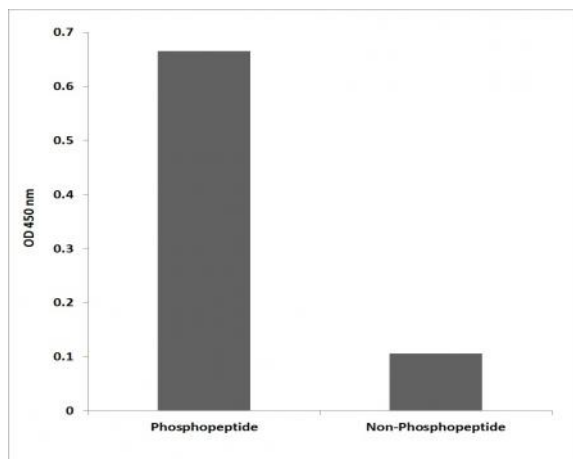
Subcellular Location : Cell junction, hemidesmosome . Nucleus membrane . Basolateral cell membrane . Found in hemidesmosomes, which are cell-substrate adhesion complexes in stratified epithelia. In transfected cells, either diffusely distributed over the cytoplasm or concentrated at the basolateral membrane. Colocalizes with the adrenergic receptors, ADREN1A and ADREN1B, at the nuclear membrane of cardiac myocytes (By similarity). .

Expression : Highly expressed in brain, heart, kidney, muscle and stomach, followed by liver, spleen and intestine.

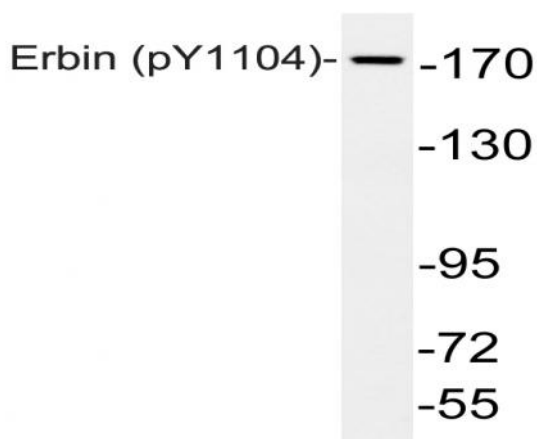
Products Images



Western Blot analysis of various cells using Phospho-Erbin (Y1104) Polyclonal Antibody



Enzyme-Linked Immunosorbent Assay (Phospho-ELISA) for Immunogen Phosphopeptide (Phospho-left) and Non-Phosphopeptide (Phospho-right), using Erbin (Phospho-Tyr1104) Antibody



Western blot analysis of lysates from HeLa cells, using phospho-Erbin (Phospho-Tyr1104) antibody.