

**c-Src (phospho Tyr529) Polyclonal Antibody**

|                              |  |
|------------------------------|--|
| <b>Catalog No :</b>          | YP0078   |
| <b>Reactivity :</b>          | Human;Mouse;Rat;Monkey   |
| <b>Applications :</b>        | WB;IHC;IF;ELISA  |
| <b>Target :</b>              | c-Src  |
| <b>Fields :</b>              | >>EGFR tyrosine kinase inhibitor resistance;>>Endocrine resistance;>>ErbB signaling pathway;>>Rap1 signaling pathway;>>Chemokine signaling pathway;>>Mitophagy - animal;>>Endocytosis;>>Axon guidance;>>VEGF signaling pathway;>>Focal adhesion;>>Adherens junction;>>Tight junction;>>Gap junction;>>Platelet activation;>>Neutrophil extracellular trap formation;>>C-type lectin receptor signaling pathway;>>GABAergic synapse;>>Inflammatory mediator regulation of TRP channels;>>Regulation of actin cytoskeleton;>>GnRH signaling pathway;>>Estrogen signaling pathway;>>Prolactin signaling pathway;>>Thyroid hormone signaling pathway;>>Oxytocin signaling pathway;>>Relaxin signaling pathway;>>Bacterial invasion of epithelial cells;>>Epithelial cell signaling in Helicobacter pylori infection;>>Pathogenic Escherichia coli infection;>>Shigellosis;>>Yersinia infection;>>Tuberculosis;>>Hepatitis B;>>Human cytomegalovirus infection;>>Kaposi sarcoma-associated herpesvirus infection;>>Herpes simplex virus 1 inf |
| <b>Gene Name :</b>           | SRC  |
| <b>Protein Name :</b>        | Proto-oncogene tyrosine-protein kinase Src   |
| <b>Human Gene Id :</b>       | 6714   |
| <b>Human Swiss Prot No :</b> | P12931   |
| <b>Mouse Gene Id :</b>       | 20779  |
| <b>Mouse Swiss Prot No :</b> | P05480   |
| <b>Rat Swiss Prot No :</b>   | Q9WUD9   |
| <b>Immunogen :</b>           | The antiserum was produced against synthesized peptide derived from human Src around the phosphorylation site of Tyr529. AA range:487-536  |

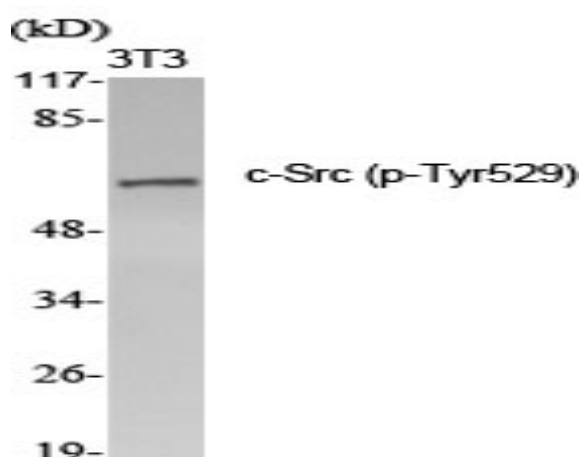
|                               |   |
|-------------------------------|---|
| <b>Specificity :</b>          | Phospho-c-Src (Y529) Polyclonal Antibody detects endogenous levels of c-Src protein only when phosphorylated at Y529.   |
| <b>Formulation :</b>          | Liquid in PBS containing 50% glycerol, 0.5% BSA and 0.02% sodium azide.   |
| <b>Source :</b>               | Polyclonal, Rabbit,IgG  |
| <b>Dilution :</b>             | WB 1:500 - 1:2000. IHC 1:100 - 1:300. ELISA: 1:10000.. IF 1:50-200  |
| <b>Purification :</b>         | The antibody was affinity-purified from rabbit antiserum by affinity-chromatography using epitope-specific immunogen.   |
| <b>Concentration :</b>        | 1 mg/ml   |
| <b>Storage Stability :</b>    | -15°C to -25°C/1 year(Do not lower than -25°C)  |
| <b>Observed Band :</b>        | 59kD  |
| <b>Cell Pathway :</b>         | ErbB_HER;Endocytosis;VEGF;Focal adhesion;Adherens_Junction;Adherens_Junction;Gap junction;GnRH;Epithelial cell signaling in Helicobacter pylori infection;  |
| <b>Background :</b>           | This gene is highly similar to the v-src gene of Rous sarcoma virus. This proto-oncogene may play a role in the regulation of embryonic development and cell growth. The protein encoded by this gene is a tyrosine-protein kinase whose activity can be inhibited by phosphorylation by c-SRC kinase. Mutations in this gene could be involved in the malignant progression of colon cancer. Two transcript variants encoding the same protein have been found for this gene. [provided by RefSeq, Jul 2008],  |
| <b>Function :</b>             | catalytic activity:ATP + a [protein]-L-tyrosine = ADP + a [protein]-L-tyrosine phosphate.,PTM:Phosphorylated on Tyr-530 by c-Src kinase (CSK). The phosphorylated form is termed pp60c-src. The phosphorylated tail interacts with the SH2 domain thereby repressing kinase activity.,similarity:Belongs to the protein kinase superfamily. Tyr protein kinase family. SRC subfamily.,similarity:Contains 1 protein kinase domain.,similarity:Contains 1 SH2 domain.,similarity:Contains 1 SH3 domain.,subunit:Interacts with DDEF1/ASAP1; via the SH3 domain. Interacts with CCPG1 (By similarity). Interacts with CDCP1, PELP1, TGFB1I1 and TOM1L2. Interacts with the cytoplasmic domain of MUC1, phosphorylates it and increases binding of MUC1 with beta-catenin. Interacts with RALGPS1; via the SH3 domain. Interacts with HEV ORF3 protein; via the SH3 domain., |
| <b>Subcellular Location :</b> | Cell membrane ; Lipid-anchor . Mitochondrion inner membrane . Nucleus . Cytoplasm, cytoskeleton . Cytoplasm, perinuclear region . Cell junction, focal adhesion . Localizes to focal adhesion sites following integrin engagement   |

(PubMed:22801373). Localization to focal adhesion sites requires myristoylation and the SH3 domain (PubMed:7525268). Colocalizes with PDLIM4 at the perinuclear region, but not at focal adhesions (PubMed:19307596).

### Expression :

Expressed ubiquitously. Platelets, neurons and osteoclasts express 5-fold to 200-fold higher levels than most other tissues.; [Isoform 1]: Expressed in spleen and liver. ; [Isoform 2]: Expressed in brain. ; [Isoform 3]: Expressed in brain.

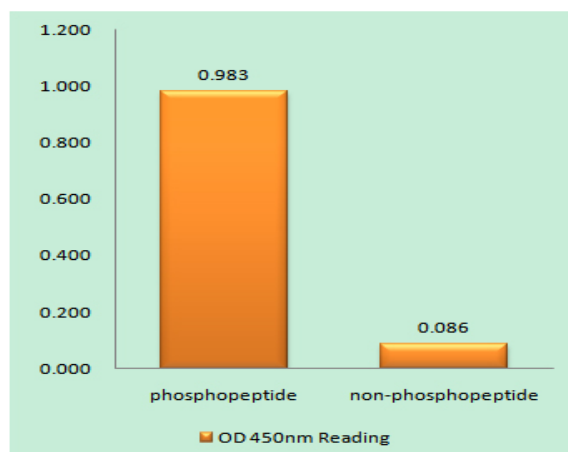
## Products Images



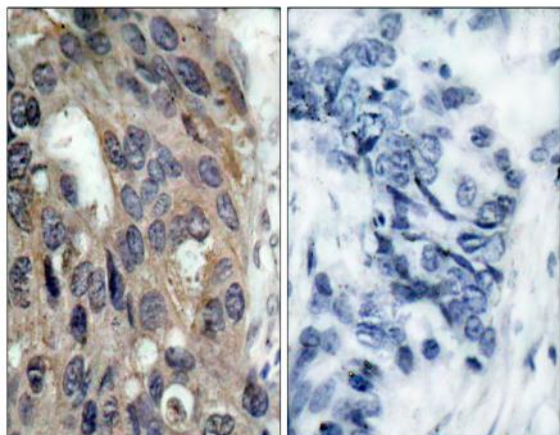
Western blot analysis of various cells using Phospho-c-Src (Y529) Polyclonal Antibody diluted at 1:2000



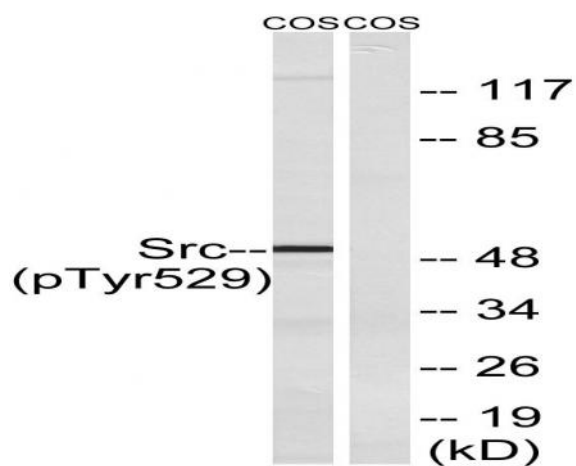
Western blot analysis of COS7 cells using Phospho-c-Src (Y529) Polyclonal Antibody diluted at 1:2000



Enzyme-Linked Immunosorbent Assay (Phospho-ELISA) for Immunogen Phosphopeptide (Phospho-left) and Non-Phosphopeptide (Phospho-right), using Src (Phospho-Tyr529) Antibody



Immunohistochemistry analysis of paraffin-embedded human breast carcinoma, using Src (Phospho-Tyr529) Antibody. The picture on the right is blocked with the phospho peptide.



Western blot analysis of lysates from COS7 cells treated with PMA 125ng/ml 30', using Src (Phospho-Tyr529) Antibody. The lane on the right is blocked with the phospho peptide.