

**BID (phospho Ser78) Polyclonal Antibody**

<b>Catalog No :</b>	YP0037
<b>Reactivity :</b>	Human;Mouse
<b>Applications :</b>	IHC;IF;ELISA
<b>Target :</b>	BID
<b>Fields :</b>	>>Platinum drug resistance;>>Sphingolipid signaling pathway;>>p53 signaling pathway;>>Apoptosis;>>Apoptosis - multiple species;>>Necroptosis;>>Natural killer cell mediated cytotoxicity;>>Non-alcoholic fatty liver disease;>>Alzheimer disease;>>Amyotrophic lateral sclerosis;>>Pathways of neurodegeneration - multiple diseases;>>Tuberculosis;>>Hepatitis C;>>Hepatitis B;>>Measles;>>Human cytomegalovirus infection;>>Influenza A;>>Kaposi sarcoma-associated herpesvirus infection;>>Herpes simplex virus 1 infection;>>Epstein-Barr virus infection;>>Human immunodeficiency virus 1 infection;>>Pathways in cancer;>>Viral myocarditis;>>Lipid and atherosclerosis
<b>Gene Name :</b>	BID
<b>Protein Name :</b>	BH3-interacting domain death agonist
<b>Human Gene Id :</b>	637
<b>Human Swiss Prot No :</b>	P55957
<b>Mouse Gene Id :</b>	12122
<b>Mouse Swiss Prot No :</b>	P70444
<b>Immunogen :</b>	The antiserum was produced against synthesized peptide derived from human BID around the phosphorylation site of Ser78. AA range:44-93
<b>Specificity :</b>	Phospho-BID (S78) Polyclonal Antibody detects endogenous levels of BID protein only when phosphorylated at S78.
<b>Formulation :</b>	Liquid in PBS containing 50% glycerol, 0.5% BSA and 0.02% sodium azide.
<b>Source :</b>	Polyclonal, Rabbit,IgG

**Dilution :** IHC 1:100 - 1:300. ELISA: 1:5000.. IF 1:50-200

---

**Purification :** The antibody was affinity-purified from rabbit antiserum by affinity-chromatography using epitope-specific immunogen.

---

**Concentration :** 1 mg/ml

---

**Storage Stability :** -15°C to -25°C/1 year(Do not lower than -25°C)

---

**Molecularweight :** 22kD

---

**Cell Pathway :** p53;Apoptosis\_Inhibition;Apoptosis\_Mitochondrial;Apoptosis\_Overview;Natural killer cell mediated cytotoxicity;Alzheimer's disease;Amyotrophic lateral sclerosis (ALS);Pathways in cancer;Viral myocardit

---

**Background :** This gene encodes a death agonist that heterodimerizes with either agonist BAX or antagonist BCL2. The encoded protein is a member of the BCL-2 family of cell death regulators. It is a mediator of mitochondrial damage induced by caspase-8 (CASP8); CASP8 cleaves this encoded protein, and the COOH-terminal part translocates to mitochondria where it triggers cytochrome c release. Multiple alternatively spliced transcript variants have been found, but the full-length nature of some variants has not been defined. [provided by RefSeq, Jul 2008],

---

**Function :** domain:Intact BH3 motif is required by BIK, BID, BAK, BAD and BAX for their pro-apoptotic activity and for their interaction with anti-apoptotic members of the Bcl-2 family.,function:The major proteolytic product p15 BID allows the release of cytochrome c (By similarity). Isoform 1, isoform 2 and isoform 4 induce ICE-like proteases and apoptosis. Isoform 3 does not induce apoptosis. Counters the protective effect of Bcl-2.,PTM:Phosphorylated upon DNA damage, probably by ATM or ATR.,PTM:TNF-alpha induces a caspase-mediated cleavage of p22 BID into a major p15 and minor p13 and p11 products.,subcellular location:A significant proportion of isoform 2 localizes to mitochondria, it may be cleaved constitutively.,subcellular location:Associated with the mitochondrial membrane.,subcellular location:Translocates to mitochondria as an integral membrane protein.,subcellular location:When uncleaved

---

**Subcellular Location :** Cytoplasm . Mitochondrion membrane . Mitochondrion outer membrane . When uncleaved, it is predominantly cytoplasmic. . ; [BH3-interacting domain death agonist p15]: Mitochondrion membrane . Translocates to mitochondria as an integral membrane protein. . ; [BH3-interacting domain death agonist p13]: Mitochondrion membrane . Associated with the mitochondrial membrane. . ; [Isoform 1]: Cytoplasm . ; [Isoform 3]: Cytoplasm . ; [Isoform 2]: Mitochondrion membrane . A significant proportion of isoform 2 localizes to mitochondria, it may be cleaved constitutively. .

---

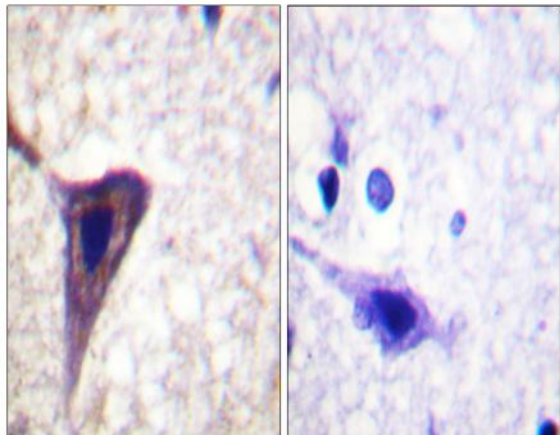
**Expression :** [Isoform 2]: Expressed in spleen, pancreas and placenta (at protein level). ; [Isoform 3]: Expressed in lung, pancreas and spleen (at protein level). ; [Isoform

---

4]: Expressed in lung and pancreas (at protein level).

---

## Products Images



Immunohistochemistry analysis of paraffin-embedded human brain, using BID (Phospho-Ser78) Antibody. The picture on the right is blocked with the phospho peptide.