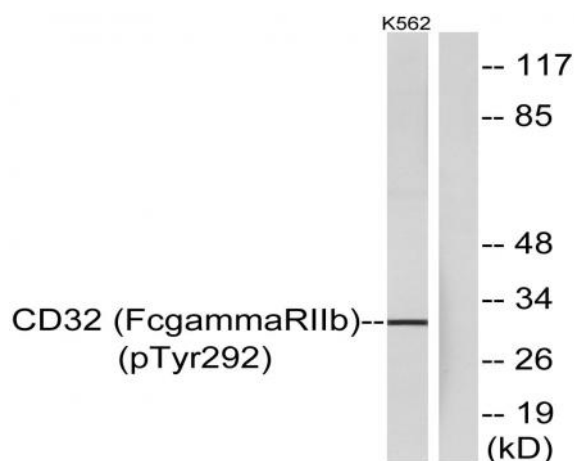


CD32 (phospho Tyr292) Polyclonal Antibody

| | |
|------------------------------|--|
| Catalog No : | YP0325 |
| Reactivity : | Human;Mouse;Rat |
| Applications : | WB;ELISA |
| Target : | CD32 |
| Fields : | >>Phagosome;>>Osteoclast differentiation;>>B cell receptor signaling pathway;>>Fc gamma R-mediated phagocytosis;>>Staphylococcus aureus infection;>>Tuberculosis;>>Measles |
| Gene Name : | FCGR2B |
| Protein Name : | Low affinity immunoglobulin gamma Fc region receptor II-b |
| Human Gene Id : | 2213 |
| Human Swiss Prot No : | P31994 |
| Immunogen : | The antiserum was produced against synthesized peptide derived from human CD32 around the phosphorylation site of Tyr292. AA range:258-307 |
| Specificity : | Phospho-CD32 (Y292) Polyclonal Antibody detects endogenous levels of CD32 protein only when phosphorylated at Y292. |
| Formulation : | Liquid in PBS containing 50% glycerol, 0.5% BSA and 0.02% sodium azide. |
| Source : | Polyclonal, Rabbit,IgG |
| Dilution : | WB 1:500 - 1:2000. ELISA: 1:10000. Not yet tested in other applications. |
| Purification : | The antibody was affinity-purified from rabbit antiserum by affinity-chromatography using epitope-specific immunogen. |
| Concentration : | 1 mg/ml |
| Storage Stability : | -15°C to -25°C/1 year(Do not lower than -25°C) |

| | |
|-------------------------------|--|
| Observed Band : | 32kD |
| Cell Pathway : | B_Cell_Antigen;Fc gamma R-mediated phagocytosis;Systemic lupus erythematosus; |
| Background : | The Fc fragment of IgG receptor IIb encoded by FCGR2B is a low affinity receptor for the Fc region of immunoglobulin gamma complexes. The encoded protein is involved in the phagocytosis of immune complexes and in the regulation of antibody production by B-cells. Variations in this gene may increase susceptibility to systemic lupus erythematosus (SLE). Several transcript variants encoding different isoforms have been found for this gene. |
| Function : | immune response, |
| Subcellular Location : | Cell membrane; Single-pass type I membrane protein. |
| Expression : | Is the most broadly distributed Fc-gamma-receptor. Expressed in monocyte, neutrophils, macrophages, basophils, eosinophils, Langerhans cells, B-cells, platelets cells and placenta (endothelial cells). Not detected in natural killer cells. |

Products Images



Western blot analysis of lysates from K562 cells treated with PMA 125ng/ml 30', using CD32 (Phospho-Tyr292) Antibody. The lane on the right is blocked with the phospho peptide.