

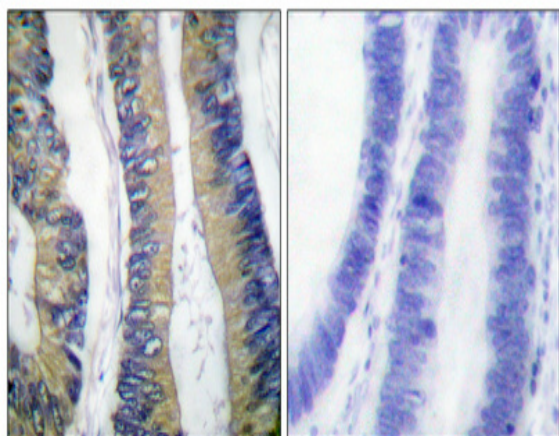
**4E-BP1 (phospho Thr69) Polyclonal Antibody**

<b>Catalog No :</b>	YP0003
<b>Reactivity :</b>	Mouse;Rat
<b>Applications :</b>	WB;IHC;IF;ELISA
<b>Target :</b>	4E-BP1
<b>Gene Name :</b>	EIF4EBP1
<b>Protein Name :</b>	Eukaryotic translation initiation factor 4E-binding protein 1
<b>Human Swiss Prot No :</b>	Q13541
<b>Mouse Gene Id :</b>	13685
<b>Rat Gene Id :</b>	116636
<b>Rat Swiss Prot No :</b>	Q62622
<b>Immunogen :</b>	The antiserum was produced against synthesized peptide derived from mouse 4E-BP1 around the phosphorylation site of Thr69. AA range:35-84
<b>Specificity :</b>	Phospho-4E-BP1 (T69) Polyclonal Antibody detects endogenous levels of 4E-BP1 protein only when phosphorylated at T69.
<b>Formulation :</b>	Liquid in PBS containing 50% glycerol, 0.5% BSA and 0.02% sodium azide.
<b>Source :</b>	Polyclonal, Rabbit,IgG
<b>Dilution :</b>	WB 1:500 - 1:2000. IHC 1:100 - 1:300. ELISA: 1:20000.. IF 1:50-200
<b>Purification :</b>	The antibody was affinity-purified from rabbit antiserum by affinity-chromatography using epitope-specific immunogen.
<b>Concentration :</b>	1 mg/ml
<b>Storage Stability :</b>	-15°C to -25°C/1 year(Do not lower than -25°C)

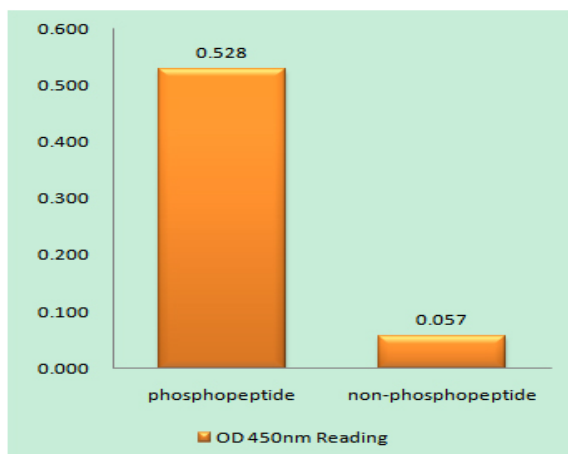
**Observed Band :** 12kD**Background :**

EIF4EBP1 encodes one member of a family of translation repressor proteins. The eukaryotic translation initiation factor 4E binding protein 1 directly interacts with eukaryotic translation initiation factor 4E (eIF4E), which is a limiting component of the multisubunit complex that recruits 40S ribosomal subunits to the 5' end of mRNAs. Interaction of this protein with eIF4E inhibits complex assembly and represses translation. This protein is phosphorylated in response to various signals including UV irradiation and insulin signaling, resulting in its dissociation from eIF4E and activation of mRNA translation.

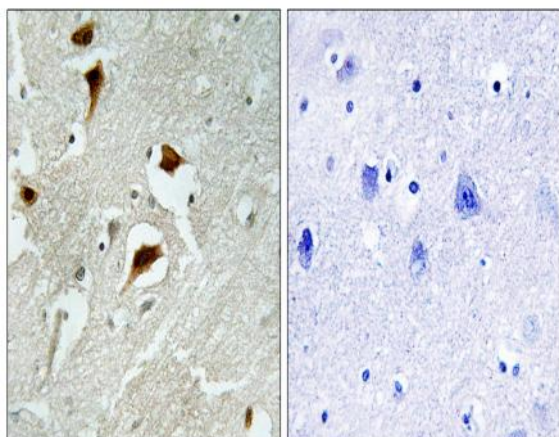
## Products Images



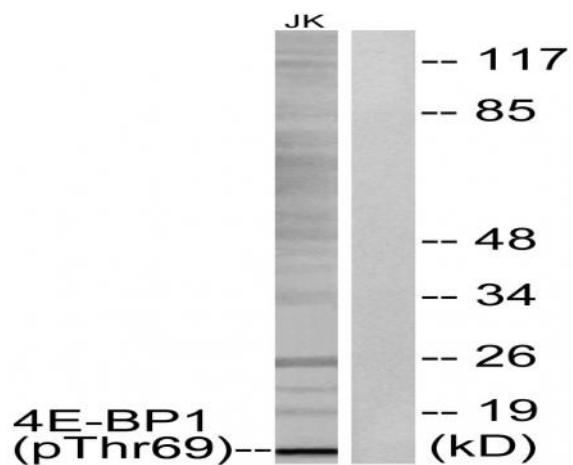
Immunohistochemical analysis of paraffin-embedded Human colon cancer. Antibody was diluted at 1:100(4° overnight). High-pressure and temperature Tris-EDTA, pH8.0 was used for antigen retrieval. Negative control (right) obtained from antibody was pre-absorbed by immunogen peptide.



Enzyme-Linked Immunosorbent Assay (Phospho-ELISA) for Immunogen Phosphopeptide (Phospho-left) and Non-Phosphopeptide (Phospho-right), using 4E-BP1 (Phospho-Thr69) Antibody



Immunohistochemistry analysis of paraffin-embedded human brain carcinoma, using 4E-BP1 (Phospho-Thr69) Antibody. The picture on the right is blocked with the phospho peptide.



Western blot analysis of lysates from Jurkat cells treated with EGF 200ng/ml 30', using 4E-BP1 (Phospho-Thr69) Antibody. The lane on the right is blocked with the phospho peptide.