

MCFD2 (Cleaved-Glu27) rabbit pAb

Catalog No :	YC0197
Reactivity :	Human;Mouse;Rat
Applications :	WB;IHC
Target :	MCFD2
Gene Name :	MCFD2 SDNSF
Protein Name :	MCFD2 (Cleaved-Glu27)
Human Gene Id :	90411
Human Swiss Prot No :	Q8NI22
Mouse Gene Id :	193813
Mouse Swiss Prot No :	Q8K5B2
Rat Gene Id :	246117
Rat Swiss Prot No :	Q8K5B3
Immunogen :	Synthesized peptide derived from human MCFD2 (Cleaved-Glu27)
Specificity :	This antibody detects endogenous levels of Human,Mouse,Rat MCFD2 (Cleaved-Glu27, protein was cleaved amino acid sequence between 26-27)
Formulation :	Liquid in PBS containing 50% glycerol, 0.5% BSA and 0.02% sodium azide.
Source :	Polyclonal, Rabbit,IgG
Dilution :	WB 1:500-2000;IHC 1:50-300
Purification :	The antibody was affinity-purified from rabbit serum by affinity-chromatography using specific immunogen.

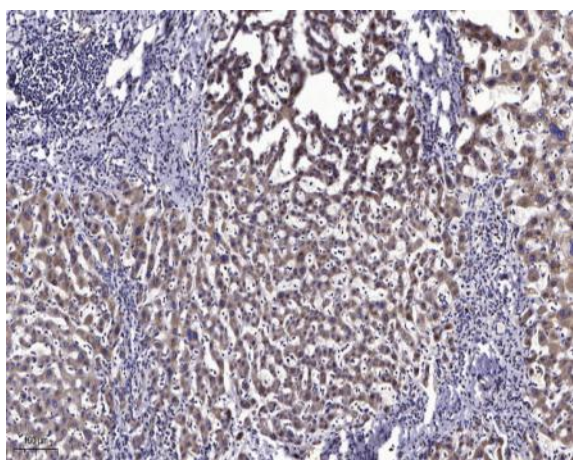
Concentration : 1 mg/ml

Storage Stability : -15°C to -25°C/1 year(Do not lower than -25°C)

Observed Band : 14 16kD

Subcellular Location : Endoplasmic reticulum-Golgi intermediate compartment . Endoplasmic reticulum . Golgi apparatus .

Products Images



Immunohistochemical analysis of paraffin-embedded human liver cancer. 1, Antibody was diluted at 1:200(4° overnight). 2, Tris-EDTA,pH9.0 was used for antigen retrieval. 3,Secondary antibody was diluted at 1:200(room temperature, 45min).