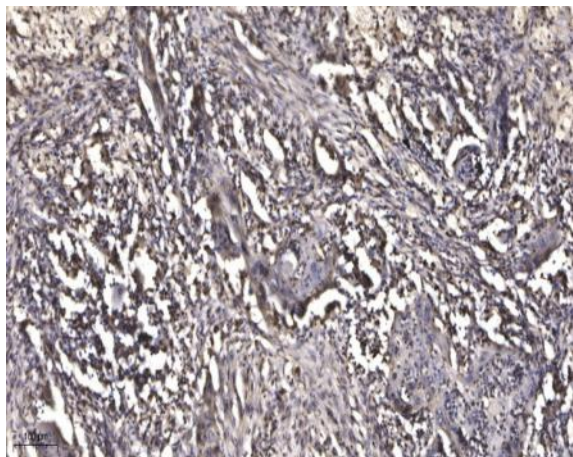


MMP28 (Cleaved-Phe123) rabbit pAb

Catalog No :	YC0191
Reactivity :	Human
Applications :	WB;IHC
Target :	MMP28
Gene Name :	MMP28 MMP25 UNQ1893/PRO4339
Protein Name :	MMP28 (Cleaved-Phe123)
Human Gene Id :	79148
Human Swiss Prot No :	Q9H239
Immunogen :	Synthesized peptide derived from human MMP28 (Cleaved-Phe123)
Specificity :	This antibody detects endogenous levels of Human MMP28 (Cleaved-Phe123, protein was cleaved amino acid sequence between 123-124)
Formulation :	Liquid in PBS containing 50% glycerol, 0.5% BSA and 0.02% sodium azide.
Source :	Polyclonal, Rabbit,IgG
Dilution :	WB 1:500-2000;IHC 1:50-300
Purification :	The antibody was affinity-purified from rabbit serum by affinity-chromatography using specific immunogen.
Concentration :	1 mg/ml
Storage Stability :	-15°C to -25°C/1 year(Do not lower than -25°C)
Observed Band :	44 57kD
Subcellular Location :	Secreted, extracellular space, extracellular matrix.

Expression : Expressed at high levels in testes and lung. Low levels are detected in kidney, pancreas and skin. Also expressed in fetal lung, brain, skeletal muscle and kidney. Expressed selectively in keratinocytes. Widely expressed in several carcinomas as well. Is up-regulated in response to injury in the skin.

Products Images



Immunohistochemical analysis of paraffin-embedded human Squamous cell carcinoma of lung. 1, Antibody was diluted at 1:200(4° overnight). 2, Tris-EDTA,pH9.0 was used for antigen retrieval. 3,Secondary antibody was diluted at 1:200(room temperature, 45min).