

**GSK3α (phospho Ser21) Polyclonal Antibody**

|                              |   |
|------------------------------|---|
| <b>Catalog No :</b>          | YP0122  |
| <b>Reactivity :</b>          | Human;Mouse;Rat   |
| <b>Applications :</b>        | WB;IHC;IF;IP;ELISA  |
| <b>Target :</b>              | GSK3α   |
| <b>Fields :</b>              | >>Chemokine signaling pathway;>>Dopaminergic synapse;>>Non-alcoholic fatty liver disease;>>Shigellosis  |
| <b>Gene Name :</b>           | GSK3A   |
| <b>Protein Name :</b>        | Glycogen synthase kinase-3 alpha  |
| <b>Human Gene Id :</b>       | 2931  |
| <b>Human Swiss Prot No :</b> | P49840  |
| <b>Mouse Gene Id :</b>       | 606496  |
| <b>Mouse Swiss Prot No :</b> | Q2NL51  |
| <b>Rat Gene Id :</b>         | 50686   |
| <b>Rat Swiss Prot No :</b>   | P18265  |
| <b>Immunogen :</b>           | The antiserum was produced against synthesized peptide derived from human GSK3 alpha around the phosphorylation site of Ser21. AA range:10-59 |
| <b>Specificity :</b>         | Phospho-GSK3α (S21) Polyclonal Antibody detects endogenous levels of GSK3α protein only when phosphorylated at S21.                           |
| <b>Formulation :</b>         | Liquid in PBS containing 50% glycerol, 0.5% BSA and 0.02% sodium azide.   |
| <b>Source :</b>              | Polyclonal, Rabbit,IgG  |
| <b>Dilution :</b>            | WB 1:500 - 1:2000. IHC 1:100 - 1:300. Immunoprecipitation: 2-5 ug:mg lysate.  |

---

ELISA: 1:20000.. IF 1:50-200

---

**Purification :** The antibody was affinity-purified from rabbit antiserum by affinity-chromatography using epitope-specific immunogen.

---

**Concentration :** 1 mg/ml

---

**Storage Stability :** -15°C to -25°C/1 year(Do not lower than -25°C)

---

**Observed Band :** 55kD

---

**Cell Pathway :** Chemokine;

---

**Background :** glycogen synthase kinase 3 alpha(GSK3A) Homo sapiens This gene encodes a multifunctional Ser/Thr protein kinase that is implicated in the control of several regulatory proteins including glycogen synthase, and transcription factors, such as JUN. It also plays a role in the WNT and PI3K signaling pathways, as well as regulates the production of beta-amyloid peptides associated with Alzheimer's disease. [provided by RefSeq, Oct 2011],

---

**Function :** catalytic activity:ATP + [tau protein] = ADP + [tau protein] phosphate.,function:Implicated in the hormonal control of several regulatory proteins including glycogen synthase, MYB and the transcription factor JUN.,similarity:Belongs to the protein kinase superfamily.,similarity:Belongs to the protein kinase superfamily. CMGC Ser/Thr protein kinase family. GSK-3 subfamily.,similarity:Contains 1 protein kinase domain.,subunit:Monomer.,

---

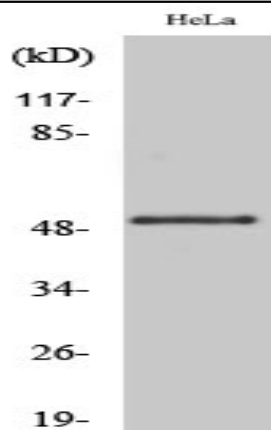
**Subcellular Location :** mitochondrion,cytosol,beta-catenin destruction complex,postsynapse,

---

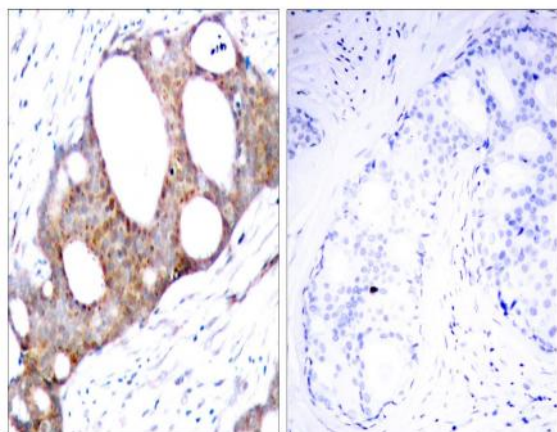
**Expression :** Brain,Eye,Foreskin,Lung,Pancreas,Platelet,Testis,

---

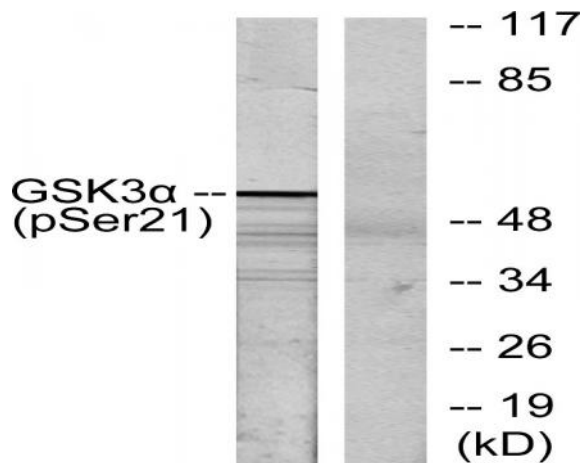
## Products Images



Western Blot analysis of various cells using Phospho-GSK3 $\alpha$  (S21) Polyclonal Antibody



Immunohistochemistry analysis of paraffin-embedded human breast carcinoma, using GSK3 alpha (Phospho-Ser21) Antibody. The picture on the right is blocked with the phospho peptide.



Western blot analysis of lysates from ovary cancer, using GSK3 alpha (Phospho-Ser21) Antibody. The lane on the right is blocked with the phospho peptide.