

Gab 1 (phospho Tyr627) Polyclonal Antibody

Catalog No :	YP0118
Reactivity :	Human;Mouse;Monkey
Applications :	WB;ELISA
Target :	Gab 1
Fields :	>>EGFR tyrosine kinase inhibitor resistance;>>ErbB signaling pathway;>>Ras signaling pathway;>>Phospholipase D signaling pathway;>>Neurotrophin signaling pathway;>>Bacterial invasion of epithelial cells;>>Proteoglycans in cancer;>>Renal cell carcinoma;>>Hepatocellular carcinoma;>>Gastric cancer
Gene Name :	GAB1
Protein Name :	GRB2-associated-binding protein 1
Human Gene Id :	2549
Human Swiss Prot No :	Q13480
Mouse Gene Id :	14388
Mouse Swiss Prot No :	Q9QYY0
Immunogen :	The antiserum was produced against synthesized peptide derived from human GAB1 around the phosphorylation site of Tyr627 AA range:611-643
Specificity :	Phospho-Gab 1 (Y627) Polyclonal Antibody detects endogenous levels of Gab 1 protein only when phosphorylated at Y627.
Formulation :	Liquid in PBS containing 50% glycerol, 0.5% BSA and 0.02% sodium azide.
Source :	Polyclonal, Rabbit,IgG
Dilution :	WB 1:500 - 1:2000. ELISA: 1:10000. Not yet tested in other applications.
Purification :	The antibody was affinity-purified from rabbit antiserum by affinity-

chromatography using epitope-specific immunogen.

Concentration : 1 mg/ml

Storage Stability : -15°C to -25°C/1 year(Do not lower than -25°C)

Observed Band : 110kD

Cell Pathway : ErbB_HER;Neurotrophin;Renal cell carcinoma;

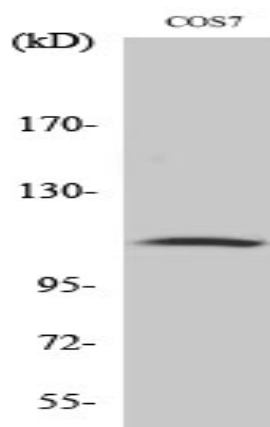
Background : GRB2 associated binding protein 1(GAB1) Homo sapiens The protein encoded by this gene is a member of the IRS1-like multisubstrate docking protein family. It is an important mediator of branching tubulogenesis and plays a central role in cellular growth response, transformation and apoptosis. Two transcript variants encoding different isoforms have been found for this gene. [provided by RefSeq, Aug 2008],

Function : function:Probably involved in EGF and insulin receptor signaling.,PTM:Phosphorylated on tyrosine residue(s) by the epidermal growth factor receptor (EGFR) and the insulin receptor (INSR). Tyrosine phosphorylation of GAB1 mediates interaction with several proteins that contain SH2 domains.,similarity:Belongs to the GAB family.,similarity:Contains 1 PH domain.,subunit:Interacts with GRB2 and with other SH2-containing proteins. Interacts with phosphorylated LAT2.,

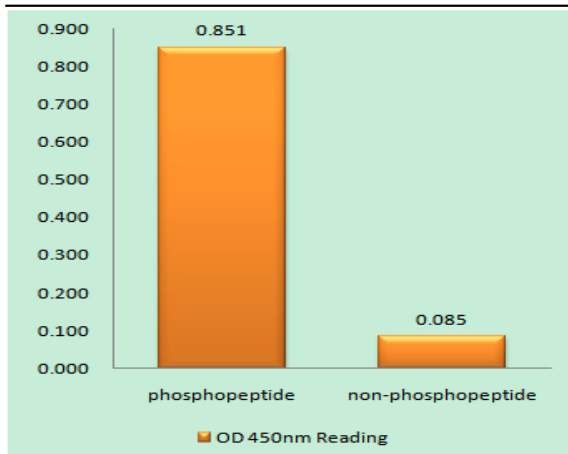
Subcellular Location : cytosol,

Expression : Testis,Whole embryo,

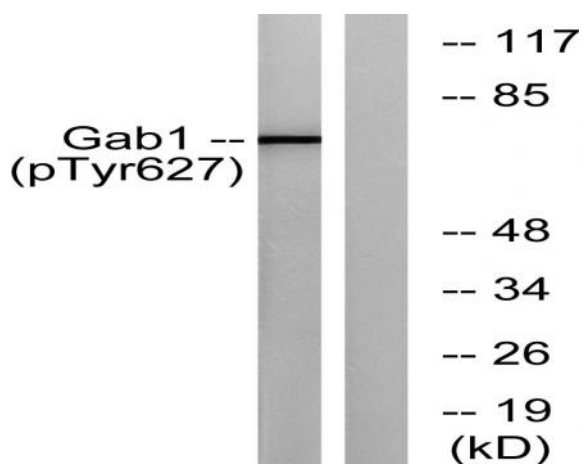
Products Images



Western Blot analysis of various cells using Phospho-Gab 1 (Y627) Polyclonal Antibody



Enzyme-Linked Immunosorbent Assay (Phospho-ELISA) for Immunogen Phosphopeptide (Phospho-left) and Non-Phosphopeptide (Phospho-right), using GAB1 (Phospho-Tyr627) Antibody



Western blot analysis of GAB1 (Phospho-Tyr627) Antibody. The lane on the right is blocked with the GAB1 (Phospho-Tyr627) peptide.