

**CATL1 (heavy chain, Cleaved-Ala114) rabbit pAb**

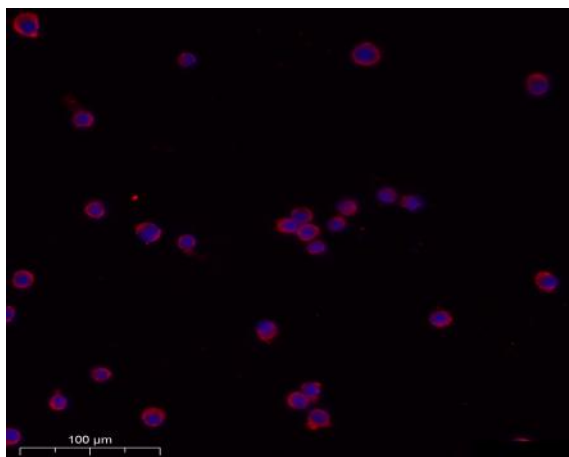
<b>Catalog No :</b>	YC0124
<b>Reactivity :</b>	Human;Rat;Mouse;
<b>Applications :</b>	WB;ELISA
<b>Target :</b>	Cathepsin L
<b>Fields :</b>	>>Autophagy - animal;>>Lysosome;>>Phagosome;>>Apoptosis;>>Antigen processing and presentation;>>Proteoglycans in cancer;>>Rheumatoid arthritis;>>Fluid shear stress and atherosclerosis
<b>Gene Name :</b>	CTSL1 CTSL
<b>Protein Name :</b>	CATL1 (heavy chain, Cleaved-Ala114)
<b>Human Gene Id :</b>	1514
<b>Human Swiss Prot No :</b>	P07711
<b>Mouse Gene Id :</b>	13039
<b>Mouse Swiss Prot No :</b>	P06797
<b>Rat Gene Id :</b>	25697
<b>Rat Swiss Prot No :</b>	P07154
<b>Immunogen :</b>	Synthesized peptide derived from human CATL1 (heavy chain, Cleaved-Ala114)
<b>Specificity :</b>	This antibody detects endogenous levels of Human CATL1 (heavy chain, Cleaved-Ala114, protein was cleaved amino acid sequence between 113-114 )
<b>Formulation :</b>	Liquid in PBS containing 50% glycerol, 0.5% BSA and 0.02% sodium azide.
<b>Source :</b>	Polyclonal, Rabbit,IgG
<b>Dilution :</b>	WB 1:1000-2000 ELISA 1:5000-20000

---

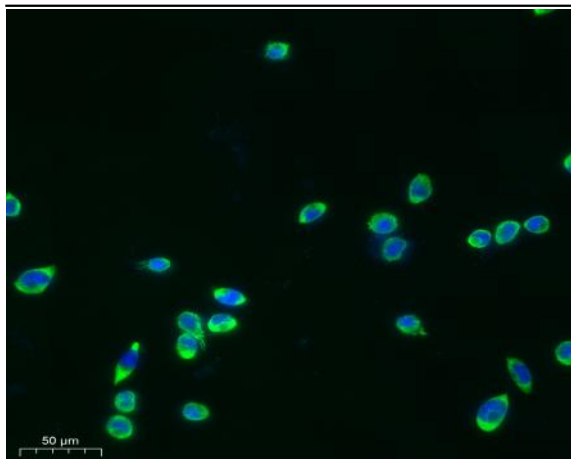
<b>Purification :</b>	The antibody was affinity-purified from rabbit serum by affinity-chromatography using specific immunogen.
<b>Concentration :</b>	1 mg/ml
<b>Storage Stability :</b>	-15°C to -25°C/1 year(Do not lower than -25°C)
<b>Observed Band :</b>	25 37kD
<b>Background :</b>	catalytic activity:Specificity close to that of papain. As compared to cathepsin B, cathepsin L exhibits higher activity toward protein substrates, but has little activity on Z-Arg-Arg-NHMec, and no peptidyl-dipeptidase activity.,function:Important for the overall degradation of proteins in lysosomes.,similarity:Belongs to the peptidase C1 family.,subunit:Dimer of a heavy and a light chain linked by disulfide bonds.,
<b>Function :</b>	proteolysis,
<b>Subcellular Location :</b>	Lysosome . Apical cell membrane ; Peripheral membrane protein ; Extracellular side . Cytoplasmic vesicle, secretory vesicle, chromaffin granule . Secreted, extracellular space . Secreted . Localizes to the apical membrane of thyroid epithelial cells. Released at extracellular space by activated dendritic cells and macrophages. . ; [Isoform 2]: Nucleus . Translation initiation at downstream start sites allows the synthesis of isoforms that are devoid of a signal peptide and do not transit through the endoplasmic reticulum to localize to the nucleus (PubMed:15099520). Nuclear location varies during the cell cycle, with higher levels during S phase (PubMed:15099520). .

---

## Products Images



Immunofluorescence analysis of SiHa cell. 1,primary Antibody was diluted at 1:100(4°C overnight). 2, Goat Anti Rabbit IgG (H&L) - AFluor 594 Secondary antibody(catalog No: RS3611) was diluted at 1:500(room temperature, 50min).



Immunofluorescence analysis of SiHa cell. 1,primary Antibody was diluted at 1:100(4°C overnight). 2, Goat Anti Rabbit IgG (H&L) - AF488 Secondary antibody (catalog No:RS3211) was diluted at 1:500(room temperature, 50min).