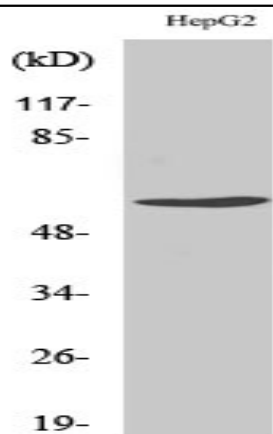


Cyclin B1 (phospho Ser126) Polyclonal Antibody

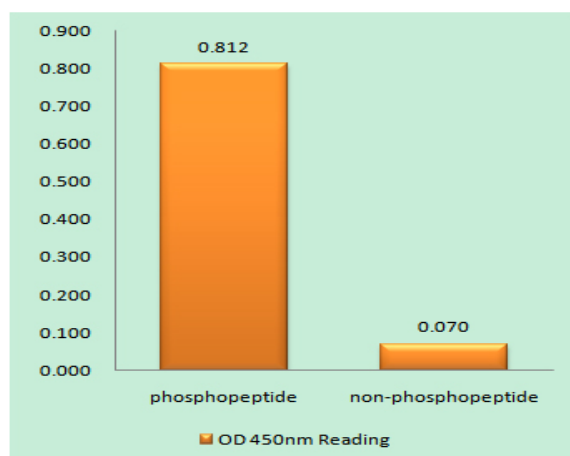
Catalog No :	YP0079
Reactivity :	Human;Mouse;Rat
Applications :	WB;IHC;IF;ELISA
Target :	Cyclin B1
Fields :	>>FoxO signaling pathway;>>Cell cycle;>>Oocyte meiosis;>>p53 signaling pathway;>>Cellular senescence;>>Progesterone-mediated oocyte maturation;>>Human immunodeficiency virus 1 infection
Gene Name :	CCNB1
Protein Name :	G2/mitotic-specific cyclin-B1
Human Gene Id :	891
Human Swiss Prot No :	P14635
Mouse Gene Id :	268697
Mouse Swiss Prot No :	P24860
Rat Gene Id :	25203
Rat Swiss Prot No :	P30277
Immunogen :	The antiserum was produced against synthesized peptide derived from human Cyclin B1 around the phosphorylation site of Ser126. AA range:91-140
Specificity :	Phospho-Cyclin B1 (S126) Polyclonal Antibody detects endogenous levels of Cyclin B1 protein only when phosphorylated at S126.
Formulation :	Liquid in PBS containing 50% glycerol, 0.5% BSA and 0.02% sodium azide.
Source :	Polyclonal, Rabbit,IgG

Dilution :	WB 1:500 - 1:2000. IHC 1:100 - 1:300. ELISA: 1:5000.. IF 1:50-200
Purification :	The antibody was affinity-purified from rabbit antiserum by affinity-chromatography using epitope-specific immunogen.
Concentration :	1 mg/ml
Storage Stability :	-15 °C to -25 °C/1 year(Do not lower than -25 °C)
Observed Band :	60kD
Cell Pathway :	AMPK
Background :	The protein encoded by this gene is a regulatory protein involved in mitosis. The gene product complexes with p34(cdc2) to form the maturation-promoting factor (MPF). Two alternative transcripts have been found, a constitutively expressed transcript and a cell cycle-regulated transcript, that is expressed predominantly during G2/M phase. The different transcripts result from the use of alternate transcription initiation sites. [provided by RefSeq, Jul 2008],
Function :	developmental stage:Accumulates steadily during G2 and is abruptly destroyed at mitosis.,function:Essential for the control of the cell cycle at the G2/M (mitosis) transition.,PTM:Ubiquitinated by the SCF(NIPA) complex during interphase, leading to its destruction. Not ubiquitinated during G2/M phases.,similarity:Belongs to the cyclin family.,similarity:Belongs to the cyclin family. Cyclin AB subfamily.,subunit:Interacts with the CDC2 protein kinase to form a serine/threonine kinase holoenzyme complex also known as maturation promoting factor (MPF). The cyclin subunit imparts substrate specificity to the complex. Binds HEI10. Interacts with catalytically active RALBP1 and CDC2 during mitosis to form an endocytotic complex during interphase.,
Subcellular Location :	Cytoplasm. Nucleus. Cytoplasm, cytoskeleton, microtubule organizing center, centrosome.
Expression :	Breast adenocarcinoma,Lung,Placenta,

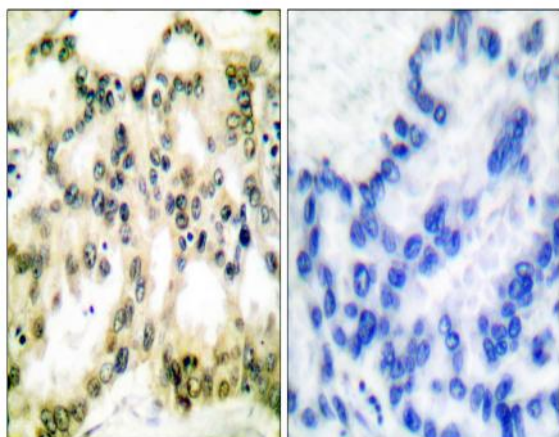
Products Images



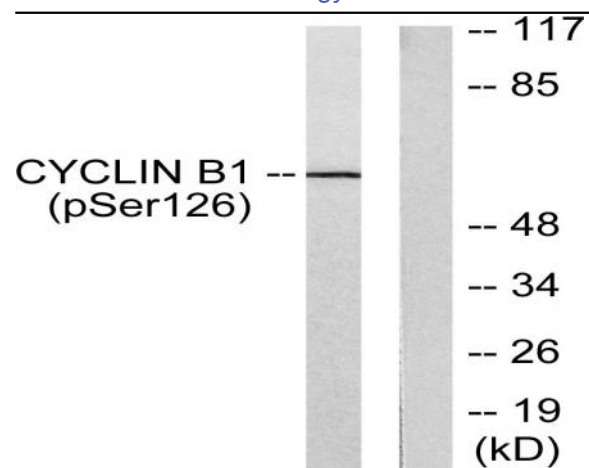
Western Blot analysis of various cells using Phospho-Cyclin B1 (S126) Polyclonal Antibody



Enzyme-Linked Immunosorbent Assay (Phospho-ELISA) for Immunogen Phosphopeptide (Phospho-left) and Non-Phosphopeptide (Phospho-right), using Cyclin B1 (Phospho-Ser126) Antibody



Immunohistochemistry analysis of paraffin-embedded human lung carcinoma, using Cyclin B1 (Phospho-Ser126) Antibody. The picture on the right is blocked with the phospho peptide.



Western blot analysis of lysates from NIH/3T3 cells treated with EGF 200ng/ml 15', using Cyclin B1 (Phospho-Ser126) Antibody. The lane on the right is blocked with the phospho peptide.