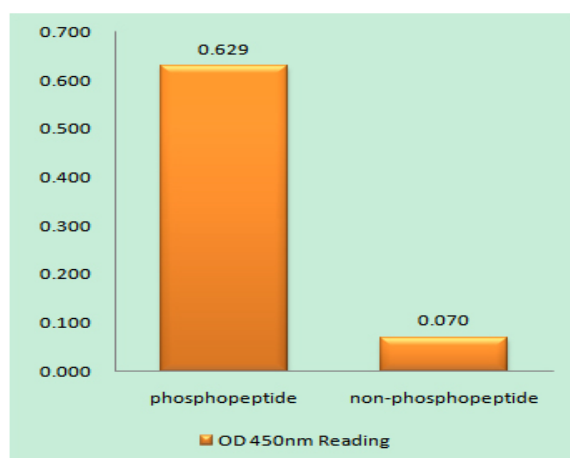


CPI-17 (phospho Thr38) Polyclonal Antibody

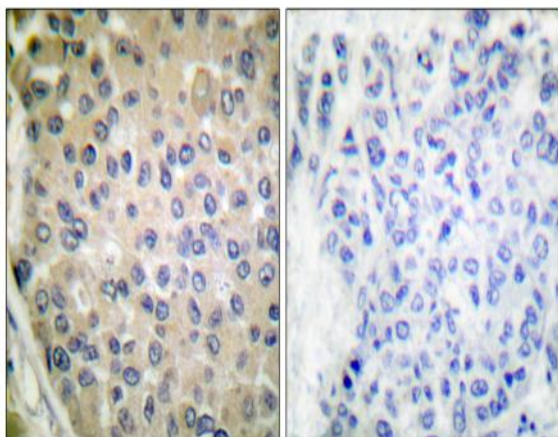
Catalog No :	YP0073
Reactivity :	Human;Mouse;Rat
Applications :	WB;IHC;IF;ELISA
Target :	CPI-17
Fields :	>>Vascular smooth muscle contraction
Gene Name :	PPP1R14A
Protein Name :	Protein phosphatase 1 regulatory subunit 14A
Human Gene Id :	94274
Human Swiss Prot No :	Q96A00
Mouse Gene Id :	68458
Mouse Swiss Prot No :	Q91VC7
Rat Gene Id :	114004
Rat Swiss Prot No :	Q99MC0
Immunogen :	The antiserum was produced against synthesized peptide derived from human CPI17 alpha around the phosphorylation site of Thr38. AA range:5-54
Specificity :	Phospho-CPI-17 (T38) Polyclonal Antibody detects endogenous levels of CPI-17 protein only when phosphorylated at T38.
Formulation :	Liquid in PBS containing 50% glycerol, 0.5% BSA and 0.02% sodium azide.
Source :	Polyclonal, Rabbit,IgG
Dilution :	WB 1:500 - 1:2000. IHC 1:100 - 1:300. ELISA: 1:20000.. IF 1:50-200

Purification :	The antibody was affinity-purified from rabbit antiserum by affinity-chromatography using epitope-specific immunogen.
Concentration :	1 mg/ml
Storage Stability :	-15°C to -25°C/1 year(Do not lower than -25°C)
Observed Band :	22kD
Cell Pathway :	Vascular smooth muscle contraction;
Background :	The protein encoded by this gene belongs to the protein phosphatase 1 (PP1) inhibitor family. This protein is an inhibitor of smooth muscle myosin phosphatase, and has higher inhibitory activity when phosphorylated. Inhibition of myosin phosphatase leads to increased myosin phosphorylation and enhanced smooth muscle contraction. Alternatively spliced transcript variants encoding different isoforms have been noted for this gene. [provided by RefSeq, Sep 2011],
Function :	function:Inhibitor of PPP1CA. Has over 1000-fold higher inhibitory activity when phosphorylated, creating a molecular switch for regulating the phosphorylation status of PPP1CA substrates and smooth muscle contraction.,similarity:Belongs to the PP1 inhibitor family.,tissue specificity:Isoform 1 is detected in aorta and testis. Isoform 2 is detected in aorta.,
Subcellular Location :	Cytoplasm .
Expression :	Isoform 1 is detected in aorta and testis. Isoform 2 is detected in aorta.

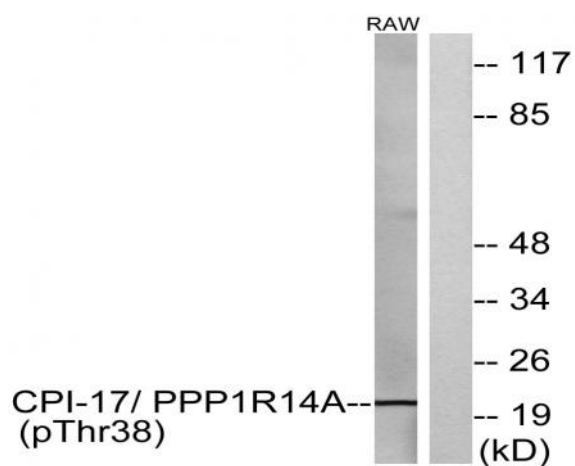
Products Images



Enzyme-Linked Immunosorbent Assay (Phospho-ELISA) for Immunogen Phosphopeptide (Phospho-left) and Non-Phosphopeptide (Phospho-right), using CPI17 alpha (Phospho-Thr38) Antibody



Immunohistochemistry analysis of paraffin-embedded human breast carcinoma, using CPI17 alpha (Phospho-Thr38) Antibody. The picture on the right is blocked with the phospho peptide.



Western blot analysis of lysates from RAW264.7 cells, using CPI17 alpha (Phospho-Thr38) Antibody. The lane on the right is blocked with the phospho peptide.