

**MMP8 (Cleaved-Leu101) rabbit pAb**

<b>Catalog No :</b>	YC0193
<b>Reactivity :</b>	Human;Mouse;Rat
<b>Applications :</b>	WB;IHC
<b>Target :</b>	MMP-8
<b>Gene Name :</b>	MMP8 CLG1
<b>Protein Name :</b>	MMP8 (Cleaved-Leu101)
<b>Human Gene Id :</b>	4317
<b>Human Swiss Prot No :</b>	P22894
<b>Mouse Gene Id :</b>	17394
<b>Mouse Swiss Prot No :</b>	O70138
<b>Rat Gene Id :</b>	63849
<b>Rat Swiss Prot No :</b>	O88766
<b>Immunogen :</b>	Synthesized peptide derived from human MMP8 (Cleaved-Leu101)
<b>Specificity :</b>	This antibody detects endogenous levels of Human,Mouse,Rat MMP8 (Cleaved-Leu101, protein was cleaved amino acid sequence between 100-101 )
<b>Formulation :</b>	Liquid in PBS containing 50% glycerol, 0.5% BSA and 0.02% sodium azide.
<b>Source :</b>	Polyclonal, Rabbit,IgG
<b>Dilution :</b>	WB 1:500-2000;IHC 1:50-300
<b>Purification :</b>	The antibody was affinity-purified from rabbit serum by affinity-chromatography using specific immunogen.

---

**Concentration :** 1 mg/ml

---

**Storage Stability :** -15°C to -25°C/1 year(Do not lower than -25°C)

---

**Observed Band :** 40 53kD

---

**Background :** catalytic activity: Cleavage of interstitial collagens in the triple helical domain. Unlike EC 3.4.24.7, this enzyme cleaves type III collagen more slowly than type I., cofactor: Binds 2 zinc ions per subunit., cofactor: Binds 3 calcium ions per subunit., domain: The conserved cysteine present in the cysteine-switch motif binds the catalytic zinc ion, thus inhibiting the enzyme. The dissociation of the cysteine from the zinc ion upon the activation-peptide release activates the enzyme., enzyme regulation: Cannot be activated without removal of the activation peptide., function: Can degrade fibrillar type I, II, and III collagens., similarity: Belongs to the peptidase M10A family., similarity: Contains 4 hemopexin-like domains., subcellular location: Stored in intracellular granules., tissue specificity: Neutrophils.,

---

**Function :** skeletal system development, ossification, proteolysis, collagen catabolic process, collagen metabolic process, multicellular organismal metabolic process, multicellular organismal catabolic process, multicellular organismal macromolecule metabolic process, bone development,

---

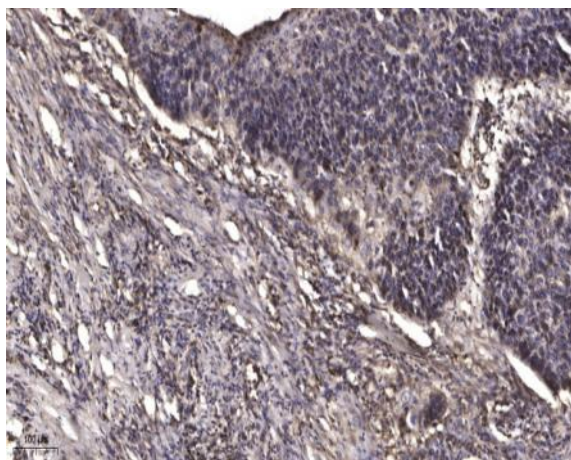
**Subcellular Location :** Cytoplasmic granule. Secreted, extracellular space, extracellular matrix . Stored in intracellular granules.

---

**Expression :** Neutrophils.

---

## Products Images



Immunohistochemical analysis of paraffin-embedded human Squamous cell carcinoma of lung. 1, Antibody was diluted at 1:200(4° overnight). 2, Tris-EDTA, pH9.0 was used for antigen retrieval. 3, Secondary antibody was diluted at 1:200(room temperature, 45min).