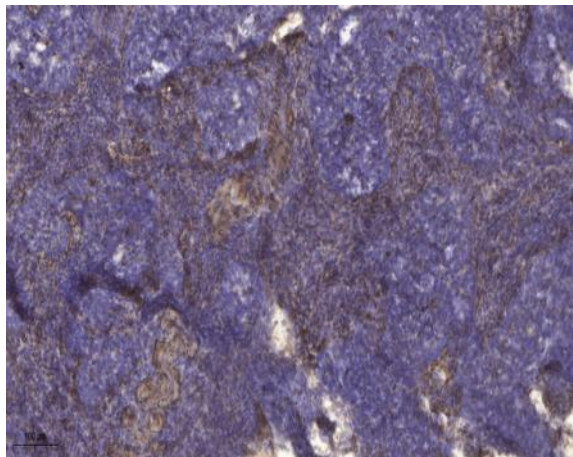


Kallikrein-4 (Cleaved-Ile31) rabbit pAb

Catalog No :	YC0181
Reactivity :	Human;Rat;Mouse;
Applications :	WB;IHC
Target :	KLK4
Gene Name :	KLK4 EMSP1 PRSS17 PSTS
Protein Name :	Kallikrein-4 (Cleaved-Ile31)
Human Gene Id :	9622
Human Swiss Prot No :	Q9Y5K2
Immunogen :	Synthesized peptide derived from human Kallikrein-4 (Cleaved-Ile31)
Specificity :	This antibody detects endogenous levels of Human Kallikrein-4 (Cleaved-Ile31, protein was cleaved amino acid sequence between 30-31)
Formulation :	Liquid in PBS containing 50% glycerol, 0.5% BSA and 0.02% sodium azide.
Source :	Polyclonal, Rabbit,IgG
Dilution :	WB 1:500-2000;IHC 1:50-300
Purification :	The antibody was affinity-purified from rabbit serum by affinity-chromatography using specific immunogen.
Concentration :	1 mg/ml
Storage Stability :	-15°C to -25°C/1 year(Do not lower than -25°C)
Observed Band :	25kD
Subcellular Location :	Secreted.

Expression : Expressed in prostate.

Products Images



Immunohistochemical analysis of paraffin-embedded human cervical carcinoma. 1, Antibody was diluted at 1:200(4° overnight). 2, Tris-EDTA,pH9.0 was used for antigen retrieval. 3,Secondary antibody was diluted at 1:200(room temperature, 45min).