

SMARCD1/3 rabbit pAb

Catalog No :	YT8049
Reactivity :	Human;Mouse;Rat
Applications :	WB
Target :	SMARCD1/3
Fields :	>>Thermogenesis;>>Hepatocellular carcinoma
Gene Name :	SMARCD1 BAF60A
Protein Name :	SMARCD1/3
Human Gene Id :	6602
Human Swiss Prot No :	Q96GM5
Mouse Gene Id :	83797
Mouse Swiss Prot No :	Q61466
Immunogen :	Synthesized peptide derived from human SMARCD1/3
Specificity :	This antibody detects endogenous levels of SMARCD1/3 at Human, Mouse,Rat
Formulation :	Liquid in PBS containing 50% glycerol, 0.5% BSA and 0.02% sodium azide.
Source :	Polyclonal, Rabbit,IgG
Dilution :	WB 1:500-2000
Purification :	The antibody was affinity-purified from rabbit antiserum by affinity-chromatography using epitope-specific immunogen.
Concentration :	1 mg/ml

Storage Stability : -15°C to -25°C/1 year(Do not lower than -25°C)

Observed Band : 55kD

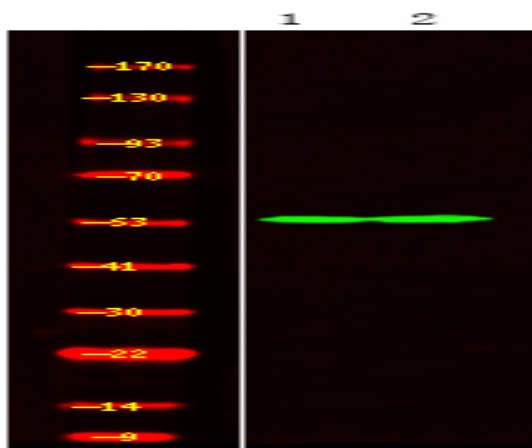
Background : The protein encoded by this gene is a member of the SWI/SNF family of proteins, whose members display helicase and ATPase activities and which are thought to regulate transcription of certain genes by altering the chromatin structure around those genes. The encoded protein is part of the large ATP-dependent chromatin remodeling complex SNF/SWI and has sequence similarity to the yeast Swp73 protein. Two transcript variants encoding different isoforms have been found for this gene. [provided by RefSeq, Jul 2008],

Function : function:Involved in chromatin remodeling. Has a strong influence on the Vitamin D-mediated transcriptional activity from an enhancer Vitamin D receptor element (VDRE). May be a link between mammalian SWI-SNF-like chromatin remodeling complexes and the vitamin D receptor (VDR) heterodimer. Mediates critical interactions between nuclear receptors and the BRG1/SMARCA4 chromatin-remodeling complex for transactivation. Also involved in vitamin D-coupled transcription regulation via its association with the WINAC complex, a chromatin-remodeling complex recruited by vitamin D receptor (VDR), which is required for the ligand-bound VDR-mediated transrepression of the CYP27B1 gene.,similarity:Belongs to the SMARCD family.,similarity:Contains 1 SWIB domain.,subunit:Component of the BAF complex, which includes at least actin (ACTB), ARID1A, ARID1B/BAF250, SMARCA2, SMARCA4/BRG1, ACTL6A/BAF53, ACTL6B

Subcellular Location : Nucleus .

Expression : Expressed in all tissues tested, including brain, heart, kidney, liver, lung, muscle, pancreas and placenta.

Products Images



Western Blot analysis of mouse brain Jurkat cell ,using primary antibody at 1:1000 dilution. Secondary antibody(catalog#:RS23920) was diluted at 1:10000