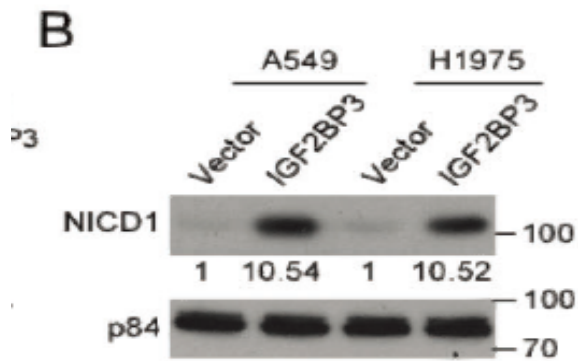


Cleaved-Notch 1 (V1754) Polyclonal Antibody

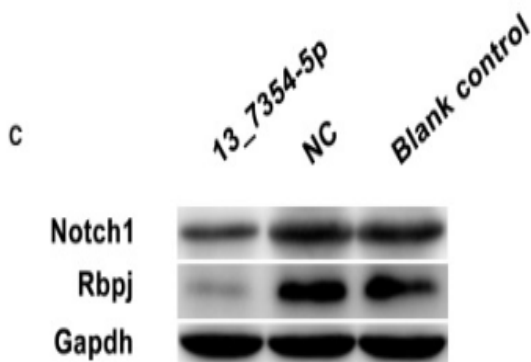
Catalog No :	YC0067
Reactivity :	Human;Mouse;Rat
Applications :	WB;IF;IHC;ELISA
Target :	Notch-1
Fields :	>>Endocrine resistance;>>Notch signaling pathway;>>Th1 and Th2 cell differentiation;>>Thyroid hormone signaling pathway;>>Prion disease;>>Human papillomavirus infection;>>Pathways in cancer;>>MicroRNAs in cancer;>>Breast cancer
Gene Name :	NOTCH1
Protein Name :	Neurogenic locus notch homolog protein 1
Human Gene Id :	4851
Human Swiss Prot No :	P46531
Mouse Gene Id :	18128
Mouse Swiss Prot No :	Q01705
Rat Swiss Prot No :	Q07008
Immunogen :	The antiserum was produced against synthesized peptide derived from human Notch 1. AA range:1735-1784
Specificity :	Cleaved-Notch 1 (V1754) Polyclonal Antibody detects endogenous levels of fragment of activated Notch 1 protein resulting from cleavage adjacent to V1754.
Formulation :	Liquid in PBS containing 50% glycerol, 0.5% BSA and 0.02% sodium azide.
Source :	Polyclonal, Rabbit,IgG
Dilution :	WB 1:500-2000, IHC 1:50-300, IF 1:50-300

Purification :	The antibody was affinity-purified from rabbit antiserum by affinity-chromatography using epitope-specific immunogen.
Concentration :	1 mg/ml
Storage Stability :	-15°C to -25°C/1 year(Do not lower than -25°C)
Observed Band :	110kD
Cell Pathway :	Dorso-ventral axis formation;Notch;Prion diseases;
Background :	<p>notch 1 (NOTCH1) Homo sapiens This gene encodes a member of the NOTCH family of proteins. Members of this Type I transmembrane protein family share structural characteristics including an extracellular domain consisting of multiple epidermal growth factor-like (EGF) repeats, and an intracellular domain consisting of multiple different domain types. Notch signaling is an evolutionarily conserved intercellular signaling pathway that regulates interactions between physically adjacent cells through binding of Notch family receptors to their cognate ligands. The encoded preproprotein is proteolytically processed in the trans-Golgi network to generate two polypeptide chains that heterodimerize to form the mature cell-surface receptor. This receptor plays a role in the development of numerous cell and tissue types. Mutations in this gene are associated with aortic valve disease, Adams-Oliver syndrome, T-cell acute lymphoblastic leukemia, chronic lymph</p>
Function :	<p>disease:Defects in NOTCH1 are a cause of aortic valve disease [MIM:109730]. The disorder consists of an early developmental defect in the aortic valve and a later de-repression of calcium deposition that causes progressive aortic valve disease. Calcification of the aortic valve is the third leading cause of heart disease in adults. The incidence increases with age, and it is often associated with a bicuspid aortic valve present in 1-2% of the population.,disease:NOTCH1 truncation is associated with T-cell acute lymphoblastic leukemia.,function:Functions as a receptor for membrane-bound ligands Jagged1, Jagged2 and Delta1 to regulate cell-fate determination. Upon ligand activation through the released notch intracellular domain (NICD) it forms a transcriptional activator complex with RBP-J kappa and activates genes of the enhancer of split locus. Affects the implementation of differentiat</p>
Subcellular Location :	<p>Cell membrane ; Single-pass type I membrane protein .; [Notch 1 intracellular domain]: Nucleus . Following proteolytical processing NICD is translocated to the nucleus. Nuclear location may require MEGF10. .</p>
Expression :	<p>In fetal tissues most abundant in spleen, brain stem and lung. Also present in most adult tissues where it is found mainly in lymphoid tissues.</p>

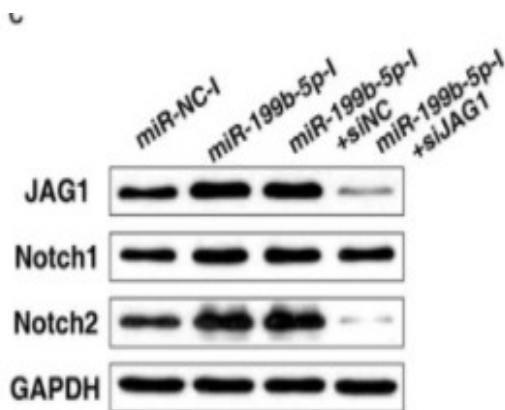
Products Images



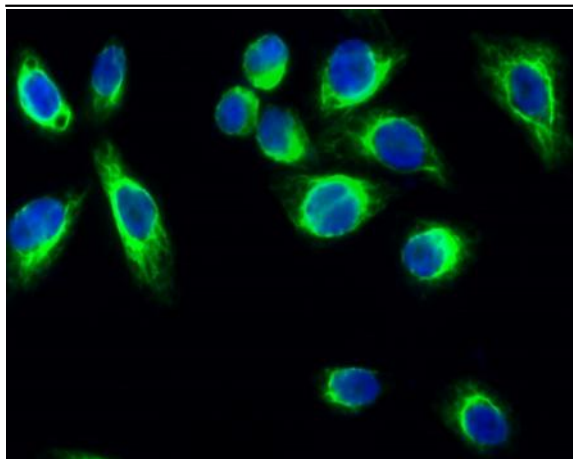
m6A-Dependent Modulation via IGF2BP3/MCM5/Notch Axis Promotes Partial EMT and LUAD Metastasis. Junchao Cai IHC,IF Human 1:200 lung adenocarcinoma (LUAD) tissue A549 cell,H1975 cell



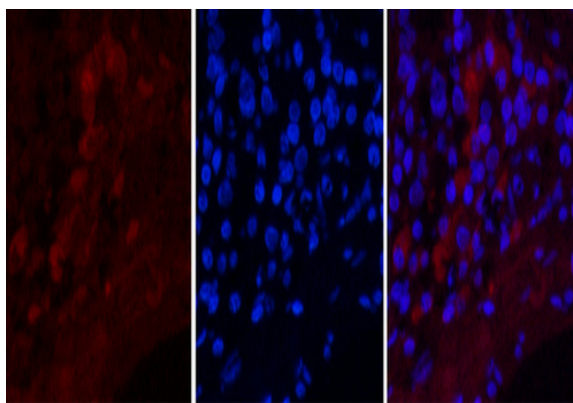
Zhao, Feng, et al. "Novel mouse miRNA Chr13_novelMiR7354-5p improves bone-marrow-derived mesenchymal stem cell differentiation into insulin-producing cells." *Molecular Therapy-Nucleic Acids* 19 (2020): 1110-1122.



Qu, Xiaochen, et al. "MiR-199b-5p inhibits osteogenic differentiation in ligamentum flavum cells by targeting JAG1 and modulating the Notch signalling pathway." *Journal of cellular and molecular medicine* 21.6 (2017): 1159-1170.

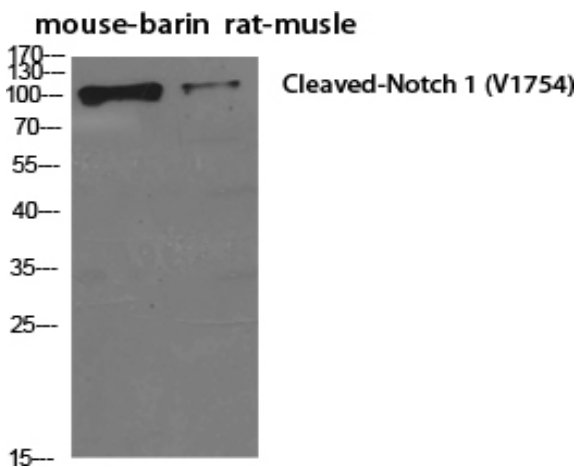


Immunofluorescence analysis of HeLa cell. 1, Cleaved-Notch 1 (V1754) Polyclonal Antibody (green) was diluted at 1:200 (4°C overnight). 2, Goat Anti Rabbit Alexa Fluor 488 Catalog: RS3211 was diluted at 1:1000 (room temperature, 50 min). 3 DAPI (blue) 10 min.

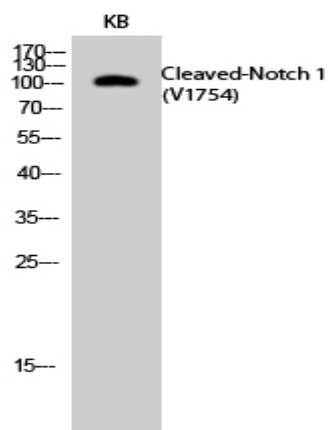


Immunofluorescence analysis of Human-lung-cancer tissue. 1, Cleaved-Notch 1 (V1754) Polyclonal Antibody (red) was diluted at 1:200 (4°C overnight). 2, Cy3 labeled Secondary antibody was diluted at 1:300 (room temperature, 50 min). 3, Picture B: DAPI (blue) 10 min. Picture A: Target. Picture C: merge of A+B

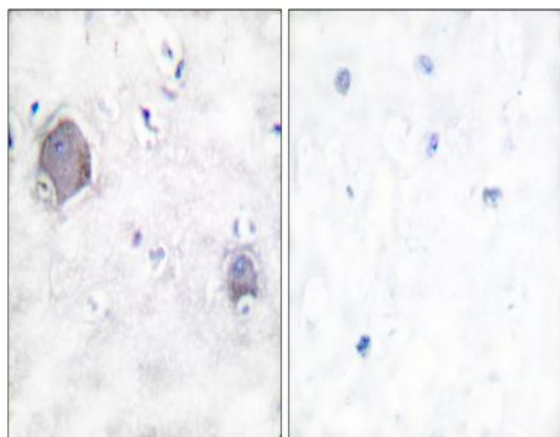
A B C



Western Blot analysis of various cells using Cleaved-Notch 1 (V1754) Polyclonal Antibody diluted at 1:500



Western Blot analysis of KB cells using Cleaved-Notch 1 (V1754)
Polyclonal Antibody diluted at 1:500



Immunohistochemistry analysis of paraffin-embedded human
brain tissue, using Notch 1 (Cleaved-Val1754) Antibody. The
picture on the right is blocked with the synthesized peptide.