

**Cleaved-KLK11 (I54) Polyclonal Antibody**

<b>Catalog No :</b>	YC0055
<b>Reactivity :</b>	Human;Rat;Mouse;
<b>Applications :</b>	WB;ELISA
<b>Target :</b>	KLK11
<b>Gene Name :</b>	KLK11
<b>Protein Name :</b>	Kallikrein-11
<b>Human Gene Id :</b>	11012
<b>Human Swiss Prot No :</b>	Q9UBX7
<b>Mouse Swiss Prot No :</b>	Q9QYN3
<b>Immunogen :</b>	The antiserum was produced against synthesized peptide derived from human Kallikrein-11. AA range:35-84
<b>Specificity :</b>	Cleaved-KLK11 (I54) Polyclonal Antibody detects endogenous levels of fragment of activated KLK11 protein resulting from cleavage adjacent to I54.
<b>Formulation :</b>	Liquid in PBS containing 50% glycerol, 0.5% BSA and 0.02% sodium azide.
<b>Source :</b>	Polyclonal, Rabbit,IgG
<b>Dilution :</b>	WB 1:500 - 1:2000. ELISA: 1:10000. Not yet tested in other applications.
<b>Purification :</b>	The antibody was affinity-purified from rabbit antiserum by affinity-chromatography using epitope-specific immunogen.
<b>Concentration :</b>	1 mg/ml
<b>Storage Stability :</b>	-15°C to -25°C/1 year(Do not lower than -25°C)
<b>Observed Band :</b>	25kD

**Background :**

Kallikreins are a subgroup of serine proteases having diverse physiological functions. Growing evidence suggests that many kallikreins are implicated in carcinogenesis and some have potential as novel cancer and other disease biomarkers. This gene is one of the fifteen kallikrein subfamily members located in a cluster on chromosome 19. Alternate splicing of this gene results in multiple transcript variants encoding distinct isoforms which are differentially expressed.[provided by RefSeq, Nov 2009],

**Function :**

function:Possible multifunctional protease. Efficiently cleaves 'bz-Phe-Arg-4-methylcoumaryl-7-amide', a kallikrein substrate, and weakly cleaves other substrates for kallikrein and trypsin. Cleaves synthetic peptides after arginine but not lysine residues.,PTM:About 40% of KLK11 is inactivated by internal cleavage after Arg-188. This proteolytic inactivation may be effected by plasminogen.,similarity:Belongs to the peptidase S1 family.,similarity:Belongs to the peptidase S1 family. Kallikrein subfamily.,similarity:Contains 1 peptidase S1 domain.,tissue specificity:Expressed in brain, skin and prostate. Isoform 1 is expressed preferentially in brain; isoform 2 in prostate. Present in seminal plasma at concentrations ranging from 2 to 37 microg/mL (at protein level).,

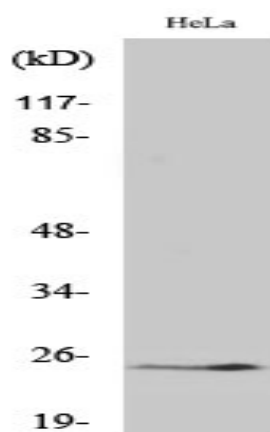
**Subcellular Location :**

[Isoform 1]: Secreted.; [Isoform 2]: Golgi apparatus.

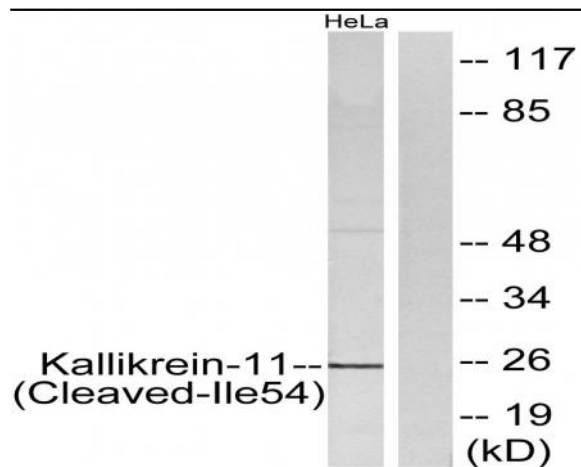
**Expression :**

Expressed in brain, skin and prostate. Isoform 1 is expressed preferentially in brain. Isoform 2 is expressed in prostate. Present in seminal plasma at concentrations ranging from 2 to 37 microg/mL (at protein level).

## Products Images



Western Blot analysis of various cells using Cleaved-KLK11 (I54) Polyclonal Antibody



Western blot analysis of lysates from HeLa cells, treated with etoposide 25uM 24H, using Kallikrein-11 (Cleaved-Ile54) Antibody. The lane on the right is blocked with the synthesized peptide.