

Bcl-2 (phospho Ser70) Polyclonal Antibody

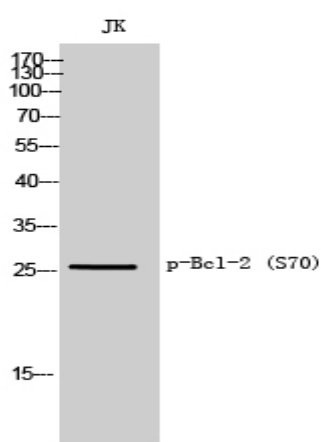
Catalog No :	YP0492
Reactivity :	Mouse,Rat
Applications :	WB,ELISA
Gene Name :	BCL2
Protein Name :	Apoptosis regulator Bcl-2
Mouse Gene Id :	12043
Rat Gene Id :	24224
Rat Swiss Prot No :	P49950
Immunogen :	The antiserum was produced against synthesized peptide derived from human BCL2 around the phosphorylation site of Ser70. AA range:36-85
Specificity :	Phospho-Bcl-2 (S70) Polyclonal Antibody detects endogenous levels of Bcl-2 protein only when phosphorylated at S70.
Formulation :	Liquid in PBS containing 50% glycerol, 0.5% BSA and 0.02% sodium azide.
Source :	Rabbit
Dilution :	Western Blot: 1/500 - 1/2000. ELISA: 1/40000. Not yet tested in other applications.
Purification :	The antibody was affinity-purified from rabbit antiserum by affinity-chromatography using epitope-specific immunogen.
Concentration :	1 mg/ml
Storage Stability :	-20°C/1 year
Molecularweight :	26266

Observed Band : 26

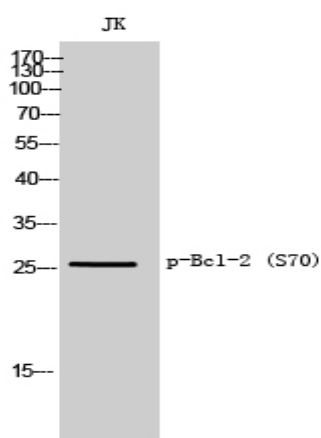
Cell Pathway : Stem cell pathway, PI3K/Akt, NF_kappaB

Background : BCL2 encodes an integral outer mitochondrial membrane protein that blocks the apoptotic death of some cells such as lymphocytes. Constitutive expression of BCL2, such as in the case of translocation of BCL2 to Ig heavy chain locus, is thought to be the cause of follicular lymphoma. Alternative splicing results in multiple transcript variants.

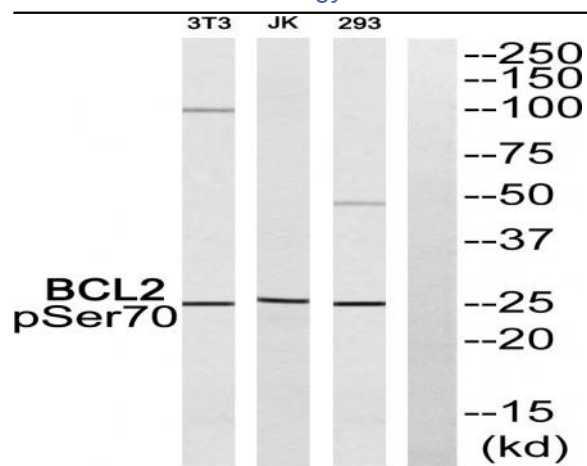
Products Images



Western Blot analysis of JK cells using Phospho-Bcl-2 (S70) Polyclonal Antibody



Western Blot analysis of Jurkat cells using Phospho-Bcl-2 (S70) Polyclonal Antibody



Western blot analysis of BCL2 (Phospho-Ser70) Antibody. The lane on the right is blocked with the BCL2 (Phospho-Ser70) peptide.