

## Cleaved-Cathepsin A 32k (R326) Polyclonal Antibody

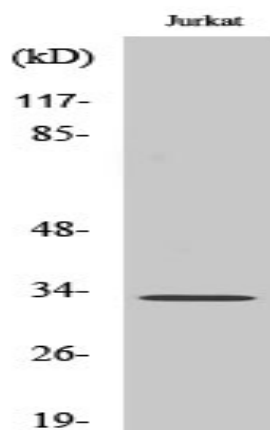
<b>Catalog No :</b>	YC0034
<b>Reactivity :</b>	Human;Mouse
<b>Applications :</b>	WB;ELISA
<b>Target :</b>	Cathepsin A
<b>Fields :</b>	>>Lysosome;>>Renin-angiotensin system
<b>Gene Name :</b>	CTSA
<b>Protein Name :</b>	Lysosomal protective protein
<b>Human Gene Id :</b>	5476
<b>Human Swiss Prot No :</b>	P10619
<b>Mouse Gene Id :</b>	19025
<b>Mouse Swiss Prot No :</b>	P16675
<b>Immunogen :</b>	The antiserum was produced against synthesized peptide derived from human PPGB. AA range:277-326
<b>Specificity :</b>	Cleaved-Cathepsin A 32k (R326) Polyclonal Antibody detects endogenous levels of fragment of activated Cathepsin A 32k protein resulting from cleavage adjacent to R326.
<b>Formulation :</b>	Liquid in PBS containing 50% glycerol, 0.5% BSA and 0.02% sodium azide.
<b>Source :</b>	Polyclonal, Rabbit,IgG
<b>Dilution :</b>	WB 1:500 - 1:2000. ELISA: 1:10000. Not yet tested in other applications.
<b>Purification :</b>	The antibody was affinity-purified from rabbit antiserum by affinity-chromatography using epitope-specific immunogen.

---

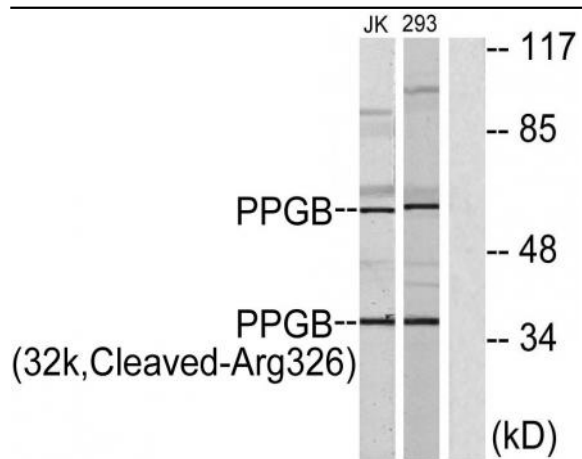
<b>Concentration :</b>	1 mg/ml
<b>Storage Stability :</b>	-15°C to -25°C/1 year(Do not lower than -25°C)
<b>Observed Band :</b>	33kD
<b>Cell Pathway :</b>	Lysosome;Renin-angiotensin system;
<b>Background :</b>	This gene encodes a member of the peptidase S10 family of serine carboxypeptidases. Alternative splicing results in multiple transcript variants, at least one of which encodes a preproprotein that is proteolytically processed to generate two chains that comprise the heterodimeric active enzyme. This enzyme possesses deamidase, esterase and carboxypeptidase activities and acts as a scaffold in the lysosomal multienzyme complex. Mutations in this gene are associated with galactosialidosis. [provided by RefSeq, Nov 2015],
<b>Function :</b>	catalytic activity:Release of a C-terminal amino acid with broad specificity.,disease:Defects in CTSA are the cause of galactosialidosis [MIM:256540]. It is an autosomal recessive disease.,function:Protective protein appears to be essential for both the activity of beta-galactosidase and neuraminidase, it associates with these enzymes and exerts a protective function necessary for their stability and activity. This protein is also a carboxypeptidase and can deamidate tachykinins.,similarity:Belongs to the peptidase S10 family.,subunit:Heterodimer of a 32 kDa chain and a 20 kDa chain; disulfide-linked.,
<b>Subcellular Location :</b>	Lysosome.
<b>Expression :</b>	Brain,Liver,Placenta,Platelet,Skin,Uterus,

---

## Products Images



Western Blot analysis of various cells using Cleaved-Cathepsin A 32k (R326) Polyclonal Antibody



Western blot analysis of lysates from 293 and Jurkat cells, treated with etoposide 25uM 1h, using PPGB (32k,Cleaved-Arg326) Antibody. The lane on the right is blocked with the synthesized peptide.