

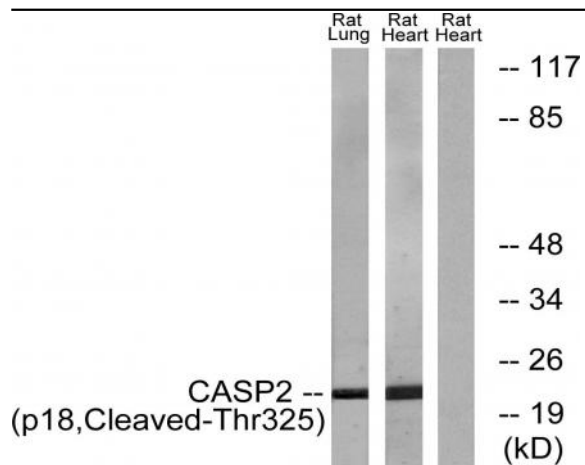
## Cleaved-Caspase-2 p18 (T325) Polyclonal Antibody

<b>Catalog No :</b>	YC0025
<b>Reactivity :</b>	Human;Mouse;Rat
<b>Applications :</b>	WB;ELISA
<b>Target :</b>	Caspase-2
<b>Fields :</b>	>>Apoptosis
<b>Gene Name :</b>	CASP2
<b>Protein Name :</b>	Caspase2
<b>Human Gene Id :</b>	835
<b>Human Swiss Prot No :</b>	P42575
<b>Mouse Gene Id :</b>	12366
<b>Mouse Swiss Prot No :</b>	P29594
<b>Rat Gene Id :</b>	64314
<b>Rat Swiss Prot No :</b>	P55215
<b>Immunogen :</b>	The antiserum was produced against synthesized peptide derived from human Caspase 2 p18 C-terminal. AA range:276-325
<b>Specificity :</b>	Cleaved-Caspase-2 p18 (T325) Polyclonal Antibody detects endogenous levels of fragment of activated Caspase-2 p18 protein resulting from cleavage adjacent to T325.
<b>Formulation :</b>	Liquid in PBS containing 50% glycerol, 0.5% BSA and 0.02% sodium azide.
<b>Source :</b>	Polyclonal, Rabbit,IgG
<b>Dilution :</b>	WB 1:500 - 1:2000. ELISA: 1:10000. Not yet tested in other applications.

<b>Purification :</b>	The antibody was affinity-purified from rabbit antiserum by affinity-chromatography using epitope-specific immunogen.
<b>Concentration :</b>	1 mg/ml
<b>Storage Stability :</b>	-15°C to -25°C/1 year(Do not lower than -25°C)
<b>Observed Band :</b>	22kD
<b>Background :</b>	This gene encodes a member of the cysteine-aspartic acid protease (caspase) family. Caspases mediate cellular apoptosis through the proteolytic cleavage of specific protein substrates. The encoded protein may function in stress-induced cell death pathways, cell cycle maintenance, and the suppression of tumorigenesis. Increased expression of this gene may play a role in neurodegenerative disorders including Alzheimer's disease, Huntington's disease and temporal lobe epilepsy. Alternatively spliced transcript variants encoding multiple isoforms have been observed for this gene. [provided by RefSeq, Jan 2011],
<b>Function :</b>	alternative products:Isoforms differ in the N- and C-termini,catalytic activity:Strict requirement for an Asp residue at P1, with 316-asp being essential for proteolytic activity and has a preferred cleavage sequence of Val-Asp-Val-Ala-Asp- -,function:Involved in the activation cascade of caspases responsible for apoptosis execution. Might function by either activating some proteins required for cell death or inactivating proteins necessary for cell survival.,PTM:The mature protease can process its own propeptide, but not that of other caspases.,similarity:Belongs to the peptidase C14A family.,similarity:Contains 1 CARD domain.,subunit:Heterotetramer that consists of two anti-parallel arranged heterodimers, each one formed by a p18 subunit and a p12 subunit. Interacts with LRDD.,tissue specificity:Expressed at higher levels in the embryonic lung, liver and kidney than in the heart and b
<b>Subcellular Location :</b>	nucleus,cytoplasm,mitochondrion,cytosol,membrane,
<b>Expression :</b>	Expressed at higher levels in the embryonic lung, liver and kidney than in the heart and brain. In adults, higher level expression is seen in the placenta, lung, kidney, and pancreas than in the heart, brain, liver and skeletal muscle.

---

## Products Images



Western blot analysis of lysates from rat heart and rat lung, using Caspase 2 (p18, Cleaved-Thr325) Antibody. The lane on the right is blocked with the synthesized peptide.