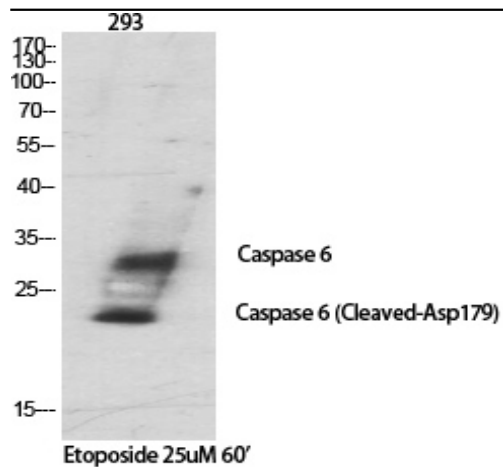


Cleaved-Caspase-6 p18 (D179) Polyclonal Antibody

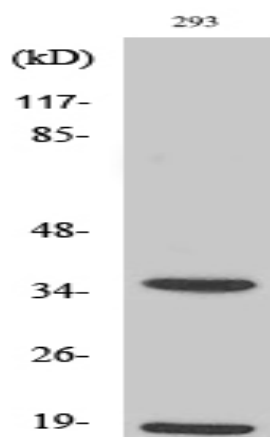
Catalog No :	YC0008
Reactivity :	Human;Rat
Applications :	WB;IHC;IF;ELISA
Target :	Caspase-6
Fields :	>>Apoptosis;>>Lipid and atherosclerosis
Gene Name :	CASP6
Protein Name :	Caspase6
Human Gene Id :	839
Human Swiss Prot No :	P55212
Mouse Swiss Prot No :	O08738
Rat Swiss Prot No :	O35397
Immunogen :	The antiserum was produced against synthesized peptide derived from human Caspase 6. AA range:130-179
Specificity :	Cleaved-Caspase-6 p18 (D179) Polyclonal Antibody detects endogenous levels of fragment of activated Caspase-6 p18 protein resulting from cleavage adjacent to D179.
Formulation :	Liquid in PBS containing 50% glycerol, 0.5% BSA and 0.02% sodium azide.
Source :	Polyclonal, Rabbit,IgG
Dilution :	WB 1:500 - 1:2000. IHC 1:100 - 1:300. ELISA: 1:40000.. IF 1:50-200
Purification :	The antibody was affinity-purified from rabbit antiserum by affinity-chromatography using epitope-specific immunogen.

Concentration :	<u>1 mg/ml</u>
Storage Stability :	<u>-15°C to -25°C/1 year(Do not lower than -25°C)</u>
Observed Band :	<u>20kD,35kD</u>
Cell Pathway :	<u>Apoptosis_Inhibition;Apoptosis_Mitochondrial;Apoptosis_Overview;</u>
Background :	<u>This gene encodes a member of the cysteine-aspartic acid protease (caspase) family of enzymes. Sequential activation of caspases plays a central role in the execution-phase of cell apoptosis. Caspases exist as inactive proenzymes which undergo proteolytic processing at conserved aspartic acid residues to produce two subunits, large and small, that dimerize to form the active enzyme. This protein is processed by caspases 7, 8 and 10, and is thought to function as a downstream enzyme in the caspase activation cascade. Alternative splicing of this gene results in multiple transcript variants that encode different isoforms. [provided by RefSeq, Oct 2015],</u>
Function :	<u>catalytic activity:Strict requirement for Asp at position P1 and has a preferred cleavage sequence of Val-Glu-His-Asp- -.enzyme regulation:Activation is suppressed by phosphorylation at Ser-257.,function:Involved in the activation cascade of caspases responsible for apoptosis execution. Cleaves poly(ADP-ribose) polymerase in vitro, as well as lamins. Overexpression promotes programmed cell death.,PTM:Cleavages by caspase-3, caspase-8 or -10 generate the two active subunits.,similarity:Belongs to the peptidase C14A family.,subunit:Heterotetramer that consists of two anti-parallel arranged heterodimers, each one formed by a 18 kDa (p18) and a 11 kDa (p11) subunit.,</u>
Subcellular Location :	<u>Cytoplasm . Nucleus .</u>
Expression :	<u>Lung,Lymphocyte,T-cell,</u>

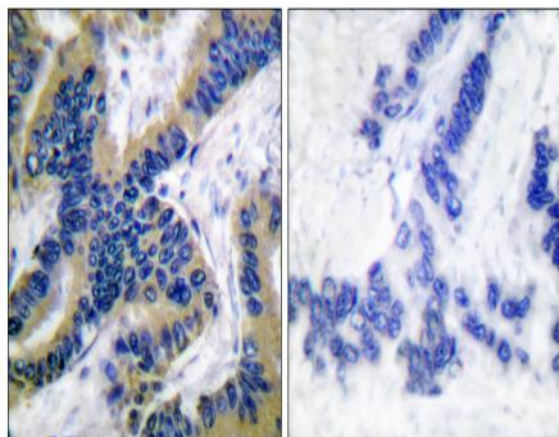
Products Images



Western Blot analysis of various cells using Cleaved-Caspase-6 p18 (D179) Polyclonal Antibody diluted at 1:1000



Western Blot analysis of 293 cells using Cleaved-Caspase-6 p18 (D179) Polyclonal Antibody diluted at 1:1000



Immunohistochemistry analysis of paraffin-embedded human lung carcinoma tissue, using Caspase 6 (Cleaved-Asp162) Antibody. The picture on the right is blocked with the synthesized peptide.