

## XCT rabbit pAb

<b>Catalog No :</b>	YT8130
<b>Reactivity :</b>	Human;Mouse
<b>Applications :</b>	IHC;WB
<b>Target :</b>	SLC7A11
<b>Gene Name :</b>	SLC7A11
<b>Protein Name :</b>	Cystine/glutamate transporter (Amino acid transport system xc-) (Calcium channel blocker resistance protein CCBR1) (Solute carrier family 7 member 11) (xCT)
<b>Human Gene Id :</b>	23657
<b>Human Swiss Prot No :</b>	Q9UPY5
<b>Mouse Gene Id :</b>	26570
<b>Mouse Swiss Prot No :</b>	Q9WTR6
<b>Immunogen :</b>	Synthesized peptide derived from human N-terminal XCT
<b>Specificity :</b>	This antibody detects endogenous levels of XCT at Human, Mouse
<b>Formulation :</b>	Liquid in PBS containing 50% glycerol, and 0.02% sodium azide.
<b>Source :</b>	Polyclonal, Rabbit,IgG
<b>Dilution :</b>	WB 1:500-2000 IHC 1:50-200
<b>Purification :</b>	The antibody was affinity-purified from rabbit antiserum by affinity-chromatography using epitope-specific immunogen.
<b>Concentration :</b>	1 mg/ml
<b>Storage Stability :</b>	-15°C to -25°C/1 year(Do not lower than -25°C)

---

**Molecularweight :** 55kD

---

**Observed Band :** 35kD

---

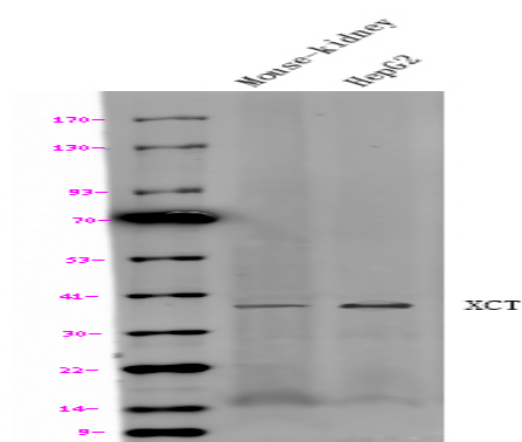
**Function :** Sodium-independent, high-affinity exchange of anionic amino acids with high specificity for anionic form of cystine and glutamate.

---

**Subcellular Location :** Membrane ; Multi-pass membrane protein .

---

## Products Images



Western blot analysis of lysates from various cells, using primary antibody dilution at 1:1000.