

NEUA rabbit pAb

Catalog No :	YT8109
Reactivity :	Human;Mouse;Rat
Applications :	IHC;WB
Target :	CMAS
Gene Name :	CMAS
Protein Name :	N-acylneuraminate cytidyltransferase (EC 2.7.7.43) (CMP-N-acetylneuraminic acid synthase) (CMP-NeuNAc synthase)
Human Gene Id :	55907
Human Swiss Prot No :	Q8NFW8
Mouse Gene Id :	12764
Mouse Swiss Prot No :	Q99KK2
Rat Swiss Prot No :	P69060
Immunogen :	Synthesized peptide derived from human C-terminal NEUA
Specificity :	This antibody detects endogenous levels of NEUA at Human, Mouse,Rat
Formulation :	Liquid in PBS containing 50% glycerol, and 0.02% sodium azide.
Source :	Polyclonal, Rabbit,IgG
Dilution :	WB 1:500-2000 IHC 1:50-200
Purification :	The antibody was affinity-purified from rabbit antiserum by affinity-chromatography using epitope-specific immunogen.
Concentration :	1 mg/ml

Storage Stability : -15°C to -25°C/1 year (Do not lower than -25°C)

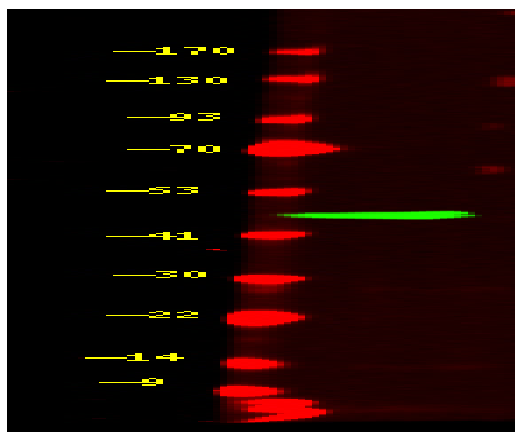
Molecularweight : 48kD

Function : Catalyzes the activation of N-acetylneuraminic acid (NeuNAc) to cytidine 5'-monophosphate N-acetylneuraminic acid (CMP-NeuNAc), a substrate required for the addition of sialic acid. Has some activity toward NeuNAc, N-glycolylneuraminic acid (Neu5Gc) or 2-keto-3-deoxy-D-glycero-D-galacto-nononic acid (KDN).

Subcellular Location : Nucleus .

Expression : Ubiquitously expressed. Expressed in pancreas, kidney, liver, skeletal muscle, lung, placenta, brain, heart, colon, PBL, small intestine, ovary, testis, prostate, thymus and spleen.

Products Images



Western Blot analysis of Hela cell lysis, using primary antibody at 1:1000 dilution. Secondary antibody(catalog#:RS23920) was diluted at 1:10000