

MCM10 rabbit pAb

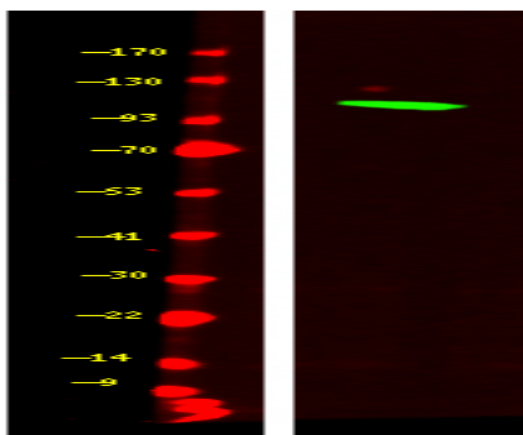
Catalog No :	YT8101
Reactivity :	Human;Mouse
Applications :	IHC;WB
Target :	MCM10
Gene Name :	MCM10 PRO2249
Protein Name :	Protein MCM10 homolog (HsMCM10)
Human Gene Id :	55388
Human Swiss Prot No :	Q7L590
Mouse Gene Id :	70024
Mouse Swiss Prot No :	Q0VBD2
Immunogen :	Synthesized peptide derived from human N-terminal MCM10
Specificity :	This antibody detects endogenous levels of MCM10 at Human, Mouse
Formulation :	Liquid in PBS containing 50% glycerol, and 0.02% sodium azide.
Source :	Polyclonal, Rabbit,IgG
Dilution :	WB 1:500-2000 IHC 1:50-200
Purification :	The antibody was affinity-purified from rabbit antiserum by affinity-chromatography using epitope-specific immunogen.
Concentration :	1 mg/ml
Storage Stability :	-15°C to -25°C/1 year(Do not lower than -25°C)

Molecularweight : 96kD

Function : Acts as a replication initiation factor that brings together the MCM2-7 helicase and the DNA polymerase alpha/primase complex in order to initiate DNA replication. Additionally, plays a role in preventing DNA damage during replication. Key effector of the RBBP6 and ZBTB38-mediated regulation of DNA-replication and common fragile sites stability; acts as a direct target of transcriptional repression by ZBTB38 .

Subcellular Location : Nucleus . Colocalizes with ORC2 in nuclei foci. Associated with chromatin in S phase. From early to mid-S phase located in discrete nuclear foci. In early S phase, several hundred foci appeared throughout the nucleus. In mid-S phase, the foci appeared at the nuclear periphery and nucleolar regions. In the late S and G phases localized to nucleoli.

Products Images



Western Blot analysis of HeLa cell lysis, using primary antibody at 1:1000 dilution. Secondary antibody(catalog#:RS23920) was diluted at 1:10000